

Kumeu Courier

free monthly community newsletter for Kumeu & districts

contents



The signs of development are everywhere and with every day we see our landscape change and our community altered.
Sarah

feature stories

- 3 Selling your home is a business decision
- 4 Riverhead and Kumeu Huapai Ratepayers
- 8 What's on and what's coming up
- 14 Fairs and festivals
- 16 Community notice board
- 18 Fancy an Indian in India
- 20 Wicked Brownies
- 22 Home help and advice

The one constant in life - change



The 'Unitary Plan' draft is set to be released for public comment on the 15th March 2013. The Association has been invited along with other Resident & Ratepayer groups to attend an presentation by the Council Planners & Councilors. This will give us a better overview of what is proposed. The general indications are that 'High Rise Apartments' are back in vogue, with 4-18 storeys planned. 4 storeys for Pt Chevalier and Te Atatu and 18 storeys for Henderson. The rural townships haven't been mentioned in terms of change. However, single dwelling sites now look to be 500 sq metres.
...cont pg 4

Cherry tree vandal wanted

Recently thirty Cherry Trees were planted down the main entrances to Kumeu and Huapai as part of a planned initiative to beautify the area. This delivered a long term and sustainable project that delivers pride, community spirit and community ownership. It is disappointing that within our district we have one clown that has a 4 wheel drive and takes pleasure in driving over peoples property. Kumeu Courier is offering a reward of \$500 for any information that results in the identification of the vehicle and the individual involved in this behaviour. The Cherry Trees that were planted with strainer posts have not been a victim of this crazy behaviour but needless to say, we as a community have had enough. Call 0275 320 421 with any information.



Billboard packs a punch



Following a controversial billboard stating that "HOOKERS WERE COMING TO HUAPAI" it is no surprise that LJ Hooker Huapai would develop a visual billboard campaign that would highlight the benefits of listing with this innovative company. The billboard on State Highway 16 uses a range of comic expletives "Pow, Zap, Bang, Boom" to highlight the knock out advertising and marketing power that is delivered behind every property listed.
....cont page 16

Hanging up the boots and white helmet.



This will be my last Kumeu Courier column. After 12 years as a Firefighter at the Kumeu Brigade I have hung up my white Deputy Chief Fire Officers helmet for the final time. I have had some amazing experiences and great opportunities come my way as a member of the Kumeu Brigade and also as a member of the NZ Fire Service. There are many things I will miss as a brigade member and many that come with the job that I won't miss. I would like this opportunity to thank all the past members of the brigade who I have had the pleasure to know and work with, and current members who share the same beliefs and values that Kumeu Brigade is known for in the community. Final thanks to my wife and kids who have put up with the pager going off at all hours of the night, waiting at home to go out and not knowing when I was getting back, thanks guys it was a lot easier knowing I had your constant support. On the 1st of February we received a brand new appliance 861, the front looks the same as 867 but the back is slightly different. So both appliances are now Iveco brands automatic transmission, ABS, ESC all the bells and whistles. Our old 861 has found a new home at Leigh Fire Station. We have two new recruits currently in Rotorua at the National Training Centre completing their 9 day recruits course. Once complete they will start down the road I did 12 years ago, I wish them all well for their time at Kumeu Brigade. I hope I have informed, educated and kept you all well updated over the years and thank you all for your comments and your support.

Take Care. Stephen Sparnon

In all cases and in all emergencies dial 111.



Stephen Sparnon,
DCFO, Kumeu
Fire Rescue.
For an
emergency call
dial 111

Kumeu Show 9th—10th March

For two days the 9th & 10th March a spectacle of all things rural come together for people from all walks of life to enjoy. The result of a survey asking 'What do show goers enjoy most at the show?' the reply came back clearly as Animals and Entertainment. So taking this on board this year the Kumeu Show is going to have an abundance of both. All equestrian events are on Saturday 9th in the arena. On Sunday the 10th the arena will be buzzing with entertainment – Cheerleaders, Westpac Helicopter, Kumeu Volunteer Fire Brigade Tug of War (Still time to register your 6 man team) Carriage rides and Dog Agility demonstrations. There will be so many animals to get up close and personal with. A huge spectacle this year will be the International Team Relay in Timber Sports - Speed and sound and wood chips flying!! Can NZ beat Australia and Samoa?? Entry Adults \$15 Children 5-13 \$5.00 Pre School and Parking Free – No dogs please!



Come and join us at Nature's Explorers Kindergarten - the best kindy ever!

Your child will thrive at Nature's Explorers. Here are a few reasons why:

- Our warm and caring nature based learning environment
- Specialist early education and low teacher/child ratio
- Gorgeous home-like environment
- Competitively priced

Try us for a day...FREE!

Come and explore for yourself by phoning us on **09 412 8800** for a free day of discovery, exploration and fun!

www.naturesexplorers.co.nz

Ph: 09 412 8800



Real Estate myths and legends

<http://www.localist.co.nz/l/55050/reviews>



Someone recently asked me why would you list your property with an independent rather than a close friend and the answer is easy. Friends and Family mixed with business and money normally never have a happy ending. Selling your home is a business decision and represents one of the biggest investments that most people have. In this way the decision to list should be based on a business formula. Who can deliver the best exposure, who has the lowest up-front costs and who is the most negotiable on their commission once the money is on the table. At LJ Hooker Kumeu we have no up-front fees and our commission is negotiable at point of sale which allows us to trim our commission to suit the circumstances and keeps your options as a Owner open. Give us a call for a free no obligation chat. Call Graham McIntyre, Principal, LJ Hooker Huapai, Phone 09 412 9602 or 0276 320 421

“For a free appraisal on the worth of your property call today”
Graham McIntyre
Country Living Realty Ltd
Licensed (REAA2008)
Ph 09 412 9602”

Coatesville		
Screen Rd	4.4ha	\$ 2,050,000
Sunnyside Rd	1.38ha	\$ 910,000
Sunnyside Rd	2.4ha	\$ 2,000,000
Kumeu		
Merlot Hights	600sqm	\$ 615,000
Motu Rd	5ha	\$ 1,550,000
Oraha Rd	1ha	\$ 975,000
Oraha Rd	1ha	\$ 1,053,000
State Highway 16	9000sqm	\$ 950,000
State Highway 16	3ha	\$ 1,200,000
Muriwai		
Motutara Rd	918sqm	\$ 583,000
Oaia Rd	2.2ha	\$ 586,000
Riverhead		
Ridge Rd	8139sqm	\$ 790,000
Wake Rd	2.3ha	\$ 1,100,000

Waimauku		
Alf Access Road	1.8ha	\$ 870,000
Rosella Grove	1920sqm	\$ 399,000
School Rd	4175sqm	\$ 686,000
State Highway 16	4040sqm	\$ 695,000
Waimauku Station Rd	1500sqm	\$ 460,000
Waitakere/ Taupaki		
Anzac Valley	1.4ha	\$ 690,000
Anzac Valley	6.1ha	\$ 1,030,000
Township Rd	1.52ha	\$ 1,185,000
Waitakere Rd	1.6ha	\$ 286,000
Whenuapai		
Fred Taylor Drive	4.1ha	\$ 2,520,000

We provide statistical data free from cost to purchasers and sellers wanting more information to make a decision. Phone us today for a free summary of a property and surrounding sale. No questions asked. Phone LJ Hooker Huapai on 09 412 9602

Money Matters

With a current shortage of quality properties for sale we are seeing an increase in enquiries from homeowners looking to extend or renovate their property instead of moving. In some cases banks may advance up to \$30,000 without any paperwork being required to assist with any projects being undertaken. On the interest rate front, borrowers are looking favourably towards the fixed rate options. There appears to be little or no chance of the Reserve Bank decreasing the official Cash Rate, which in turn suggests no drop in the floating rate on the horizon. The plus point for borrowers is that the lenders are offering very good fixed rate options at the moment. We're always available to discuss your requirements so drop us a line.



Phone 09 4119251 / 027 4119255 or david@davidlloyd mortgages.co.nz



ANGLOMOIL
 SUPERIOR LUBRICANTS

Your Local Oil and Lubricant Supplier!
 Warehouse / Showroom at
 Unit 4 / 10 Loft Place, Kumeu
 Hours: 10am to 4pm
 Monday / Tuesday / Thursday / Friday
 Or by appointment

Ph: 09-412-5685 Mob: 0274-929-714 www.anglomoil.co.nz

CALL Your Friendly Bin Company!

MR BINZ
 Ph 412-9309

Quality Bin Service
 Local Experts!

www.mrbinz.co.nz | ph 412 9309

Len Gurney
 Director
 m: 0274 517 709 a/hrs: 09 416 9411
 e: len@northwestflooring.co.nz

NORTHWEST FLOORING XTRA™

10 Shamrock Drive, Kumeu 0810
 t: 09 412 8188 f: 09 412 8688 www.flooringextra.co.nz

Inspiration. Encouragement Experience.

Davis Funerals will create a funeral ceremony with the style and service that celebrates the life of your loved one.

Call John Schipper today for a free consultation or a friendly chat on the type of service you would like.

Davis Funerals
 Henderson 09 835 3557 www.davisfunerals.co.nz

RIVERHEAD RATEPAYERS UPDATE

Good news, my persistence with Auckland Transport (and that of anyone else who was hassling them) about the state of Kaipara Portage Road has finally paid off. A full reseal of KPR has been approved for the new financial year starting July 2013, however they will wait until after the construction phase of the new subdivisions have finished before they do it. Makes sense to me otherwise a waste of ratepayers money. Don't worry, I won't forget and I'll be reminding them, I have it in writing! They have made a commitment to assess the road for any urgent safety issues and will fix those immediately if they see anything. No news yet on a footpath for Gt Nth Rd, but we have time to keep hassling them about that. Our argument here is based around the H&S risk of the kids walking to school, and the influx of kids as a result of the subdivision, as it is the most likely way to get a result. Good to see various road works happening around the place, and it looks like Alexander St is finally going to be sealed! Don't forget about the monthly Residents and Ratepayers Association meeting.

Matthew Punter
Chairperson RRRA

...continued from page 1

The Huapai North Environment Court approval allowed a average of 700 sq meters with a small area of more intensive housing close to the parks. The extent of how the public accept the high rise strategy will reflect in demand for living in outer areas. The values of land on property are largely determined by the quality of living space and location.

With a major shift to high rise may generate a movement out into the countryside living for those who choose the quality of living ahead of small apartment living. In Kumeu & Huapai the buildings this month are being removed in Kumeu for the Supermarket and earthworks are starting in Huapai North for new housing. Both of these changes signal the new growth and development for Kumeu-Huapai.

The question of other housing areas or new industrial areas will surface in the March 'Unitary Plan'. The community will only have a short period to submit on this document before it is publicly notified in October-November 2013. The Council are limiting appeal rights to the Environment Court, so the submission to the Council will be important as it will be the only chance we have to influence the direction of the Unitary Plan.

The next meeting of the Ratepayers Association is on Wednesday 6th March at the Community Centre at 7.30pm Please attend! We will be able to report back on the joint Ratepayers meeting! Challenging times ahead!

Pete Sinton Chairman, Kumeu-Huapai Ratepayers & Resident Association
Ph. 412-2016 Email petesinton@townplanner.co.nz



Pete Sinton

Chairman
Kumeu Huapai Residents and
Ratepayers Association
Ph 09 412 2016

Hours
7am-6pm

Ages
Birth ~ 5yrs

Jojo's Childcare Ltd

- ~ Plenty of Love & Nurturing
- ~ Nappies Included for Under 2's
- ~ Warm & Cosy Nursery Environment
- ~ **FREE Kindy for 3-5 Year Olds**
Conditions Apply
- ~ Healthy Home Style Meals
- ~ Amazing Qualified Teachers
- ~ Fantastic Educational Programme
- ~ Plenty of Off-street Car Parking

Enrolling now across all age groups

09 412 5325

5/21 Orahua Road Kumeu, jojos.ltd@xtra.co.nz

Exciting new fee structure

www.jojoschildcare.co.nz



Free Gifts with Wella illumina colour - Zash hair

With all new illumina colours you will receive two free System Professional travel size products. Zash Hair is very excited to be offering this as part of the extensive services, Illumina Colour range. Illumina Colour provides up to 70% more light reflection and superior hair protection, colour after colour.

- It brings out the natural light within blonde hair to elevate shine to a whole new level.
- It transforms muted auburn and dark blonde hair to shiny, glossy hair full of light and vibrancy.
- It lightens darker brunette bases to reveal shine spectrum within the hairs natural shade.

Illumina Colour provides sheer, natural colour with no compromise on hairs quality. Cuticles are smooth and clear which allows for outstanding light reflection and shiny healthy-looking hair. Come in and try our new colour today.

Carla at Zash Hair 021814663. 77 Waitakere Road, Waitakere Township



The web - unspun (how search engines work)

A Search Engine is a glorified indexing tool used to index website content on the internet and uses automated robots, called "crawlers," or "spiders" which can reach the many billions of interconnected documents that are stored on websites around the world. When a person looks for something online, it requires the search engines to scour their indexes of billions of documents and do two things – first, return only those results that are relevant or useful to the searcher's query, and second, rank those results in order of perceived usefulness. To a search engine, relevance means more than simply finding a page with the right words. Currently, *the major search engines typically interpret importance as popularity* – the more popular a site, page or document, the more valuable the information contained therein must be. Popularity and relevance aren't determined manually. Instead, the engines craft careful, mathematical equations – algorithms – to sort the wheat from the chaff and then rank the result in a specific order on the search results page. Wouldn't it be nice to know what determines the order? David Partis—Designhand
David Partis (Designhand Limited) www.designhand.co.nz Contact David Partis (Designhand Limited) www.designhand.co.nz




**Shamrock
Physiotherapy Clinic**

Carolyn O'Leary
Dip. Phys. Dip M.T (Manipulative Therapy)

p. 09 4122 945
m. 027 6288 983
carolyn.oleary.physio@gmail.com

4b Shamrock Drive
Kumeu 0891 Auckland

We have finally moved to new professional premises in Huapai.

From here we can fully support your **computer and internet connection.**

We look forward seeing you at our new location.

it-iQ

422 Main Road
Huapai
(Next to Ray White)
09 412 9227
www.itiq.co.nz

*We know your IT matters
Every aspect.*

The Travel Brokers

'Your personal travel professional'

Tanya Franklin
Travel Broker

Tel DDI: 64 9 411 9105 Mobile: 021 254 9169
Email: tanya.franklin@thetravelbrokers.co.nz
www.thetravelbrokers.co.nz/tanyafranklin
Waimauku, Auckland 0881, New Zealand

A member of Just Tickets Ltd. Just Tickets Ltd is a wholly owned subsidiary of Stella Travel Services, 66 Wynham Street, Auckland

GLOBUS.

FOR A LIMITED TIME ONLY

BOOK A GLOBUS TOUR OF 12+ DAYS AND RECEIVE A **FREE PREMIUM GIFT*** (ONE PER COUPLE)



DIGITAL CAMERA with memory card
E-READER with case

*Conditions apply. Offer is not redeemable for cash and based on one product per couple. Single travellers receive a \$100 bookstore voucher. Limit 1 product per booking. Promotion valid for new bookings made 16/01/13 – 27/03/13 or until sold out. Not combinable with any other special offers. Must advise chosen product at time of booking. Offer may be amended or withdrawn at any time. See globustours.co.nz for full terms and conditions and offer details.

Kiwi SPANNZ
NEW GENERATION BUILDINGS

- Locally Owned and Operated
- Designed and Engineered in NZ for NZ Conditions
- Quality & Honesty with Zero Limits
- Any Building to Suit your Height/Length/Inclusions
- Your Entire Consent Process looked after for You
- Up to 30m Clear Span & up to 7m Stud Height

**SHEDS, FARM & LIFESTYLE BUILDINGS
COMMERCIAL & INDUSTRIAL BUILDINGS**



Body Builders Ltd
329 Main Rd
Huapai
Auckland 0810

PO Box 5 Kumeu
Auckland 0841
T: 09 412 8455
F: 09 412 8458
FREEPHONE: 0800 870 078

E: rodney@kiwispannz.co.nz

0800 870 078 www.kiwispannz.co.nz

Soljans traditional Croatian harvest celebration



Once again Soljans Estate in Kumeu Wine Country will celebrate the 2013 vintage over the Easter weekend 30th March to 1st April with a Croatian grape harvest, 'Berba'. The traditional "Berba" harvest festival started back in the 18th century in Croatia and is a fun and lively affair to celebrate the grape harvest. While everyone should experience "Berba" at least once in their lives, booking an air ticket to Croatia is unnecessary, because it is also celebrated in style much closer to home at Soljans Estate Winery, where the Soljan family are continuing their family tradition here in New Zealand. This Easter, Soljans will celebrate their 10th Berba Festival since relocating to their popular new winery near Kumeu and yet again this promises to be a fun time for all the family. There is always a buzz around Soljans when the grapes are being harvested, so if you've harboured a secret desire to do some grape stomping, this is your opportunity. After stomping those grapes underfoot, visitors will have an opportunity to taste the refreshing "Novo Vino" (new wine) juice that has started fermenting (not from the grapes just crushed though). There will be vineyard and winery tours, free tastings, traditional dance demonstrations, live music, fun and

games for children and of course the seasonal fresh menu plus traditional style Croatian food platters and samples of the Croatian delicacy Pašurates in the award-winning Soljans Winery Café. Phone 09 412 2824

A fabric shop in Kumeu - Fabric & Thingz



Fabric & Thingz is a new Retail / Wholesale Fabric shop has just opened at 10B Shamrock Drive in Kumeu. Whether you are a home sewer and only need a small quantity or require bulk purchases at wholesale prices we can cater to your needs. Plus we stock haberdashery lines from zips to elastics, craft fabrics, crystals and more. Over the years we have provided fabrics for TVNZ's Dancing with the Stars, Farmers Santa Parade, and World of Wearable Arts and our fabric was used in the opening ceremony for the Rugby World Cup! Owners Sam & Ron Whelan of RJ Textiles & Dance Fabrics have over 40 years in the fabric trade, so come in and visit us we would love to help you with your dressmaking needs. Mention you saw this in the Kumeu Courier & receive 10% off any non discounted items. Fabric & Thingz is now open in Kumeu for all your Fabric & Haberdashery needs open 9am to 5pm Mon to Friday. Saturday 10am to 3pm Ph 09 412 9123, 10B Shamrock Drive, Kumeu

Looking back over 75 years - Huapai Golf

April 1938 Huapai Golf Club formed... April 1939 First Annual General Meeting...1941 Greens fenced...This tells of the formation and beginning of the Huapai Golf Club, first situated on land which today verges on the western boundary of the Huapai Township. The club, which by 1945 had acquired land from the Auckland City Council at 1261 Riverhead- Coatesville Highway, had 120 members. These were mainly local farmers, orchardists and local business people and their wives. Today there are just over 900 members. Past players of the Huapai Golf Club are encouraged to register for the 75th JUBILEE celebrations. Registrations close on March 1 for the April 19,20, 21 weekend event, which features a Commemorative Booklet, Saturdays 18 golf hole individual competition, an afternoon gathering for non golfers with course tour, Prize giving and Dinner. Sunday's Ambrose golf tournament prize giving and lunch. At least 265 former members have been contacted so far. Registration forms are available on the website..... www.huapaigolf.co.nz or at the Clubs office. For further details about the weekend's planned celebrations, please contact Briar McKeown Phone 09 8339053

J1 JiuJitsu coming to area



I am currently putting together a group which will operate in the general Kumeu/Huapai/Waimauku area. J1 teaches Martial Arts in a safety focussed and friendly, non-threatening environment primarily

focussing on self protection rather than sport. Jujutsu is incredibly flexible and effective for people of different sizes because instead of relying on strength, we focus on using leverage and using an opponent's strength against them. You won't be standing in lines punching and kicking the air monotonously, every session will be practical and hands-on. Primarily looking for potential beginners who are 20+, male or female (1/3 of J1 members at Albany and Onehunga are female) with a good sense of humour. Check out the website on www.j1jiujitsu.com or drop me an email (Christiaan) on kama-kura@jiujitsu.co.nz or give me a call on 0220588949.

SOLJANS ESTATE WINERY & CAFÉ IN KUMEU WINE COUNTRY

wine tasting • gift shop • café
functions • weddings

www.soljans.co.nz
366 State Highway 16, Kumeu
T: 412 2824 cellar@soljans.co.nz

A good beginning lasts a lifetime

With the advent (proliferation) of new early childhood centres in the local area over the last few years, we have always endeavoured to retain our innovative edge and remain true to our core values. To provide the very best start for the children of our community and to do this in a way that promotes respect, initiative and confidence. More recently we have revisited our own beliefs, the original reasons for doing what we do. We believe that over the 20 years since our opening, social changes have had a dramatic influence on our young children; we need to return to some of the simple values that can be lacking and avoid the commercial traps, that are only too evident in today's society. We are fortunate enough, here in Kumeu, to live in an area rich in space and sense of community, these are critical ingredients that we feel should be treasured and need to be preserved. We want our children to learn a love of the outdoors, appreciate and respect our environment and the lessons that nature provides. Being set amongst the trees, open spaces, ponds and waterways, we are privileged to be able to promote respect, trust and a sense of exploration through creative and inspiring natural experiences. Children are challenged to learn together and collaborate, then as individuals, to question, to explore and foster an appreciation for nature. They need to learn to evaluate a given situation, take a risk, and make a few mistakes! This will enhance their physical confidence, emotional intelligence and develop strong relationships. Our wish is to develop confident young children with enthusiasm to learn and to share their love of play and exploration. Rita and Shaun Eastell. For more information phone 09 4128055.

New Zealand's biggest cuppa –summer picnic

Hospice West Auckland Hospice Fundraiser 'New Zealand's Biggest Cuppa' is an enormous afternoon of free, fun entertainment designed to appeal to the whole family... including all the aunts and cousins. On Saturday 23 March from 1 – 4pm, Potter's Park (on the corner of Dominion and Balmoral Roads in Mt. Eden) will be a picnicker's paradise. Children will enjoy playing classic old-school games including egg & spoon, three-legged and sack races. For those who prefer to kick it nu-skool, box wars will appeal. Box wars are a supervised opportunity for children to create armour and weaponry out of recycled boxes and battle it out on the grass. Face painting will also be available. Families and couples can take the opportunity to relax and bask in the sun. There will be a bake sale on-site, as well as plenty of freshly brewed Dilmah Tea. People will be able to lie back on their picnic rugs or in a romantic leafy nook with some freshly baked treats and enjoy the free entertainment. University of Auckland Songwriter of the Year Jooce Tuck will give her xylophones and vibraphones an airing in the Rotunda, and renowned soul and rock'n'roll record spinner, DJ Tina Turntables, will fill the warm afternoon air with the sweet sounds of golden summers past. Vintage aficionados will have the opportunity to rummage through the pop-up Hospice shop on site, where they will be able to acquire treasure such as Royal Albert and other heirloom china, retro and designer clothes, collectables and kitchenware. Radio announcer Ray Mankelow will MC the event, ensuring everyone knows when the many competitions and raffles are running. Tea connoisseurs will love the prizes which include a large Dilmah gift bag and a year's supply of Dilmah Tea. There will also be plenty of other special prizes to be won on the day. Be in to win! When guests register online they will go in the draw to win a return trip for two to Queenstown courtesy of Air New Zealand, including two night's accommodation at Crowne Plaza Queenstown and a complimentary dinner for two at Jervis Steak House. See www.hwa.org.nz and click 'news' for more details. The people of Auckland are invited to bring their picnic rugs and their sunscreen to Potter's Park on Saturday 23 March to be part of NZ's Biggest Cuppa. They will be entertained, they may win a prize and they will contribute to the sustainable future of a vital Auckland service – Hospice West Auckland. In the event of poor weather the event will be held on Saturday 30 March. For further information please contact: Kathryn van Beek – Funding Coordinator: Events, Hospice West Auckland (09) 834 9752, 027 466 0875, kathrynb@hwa.org.nz

Moving on?

Whether you're moving to a new home or a new bank you'll need to move quickly for these hot rates.

4.89%
p.a.*

Special 1 year fixed rate

5.39%
p.a.*

Special 3 year fixed rate

5.75%
p.a.*

Special 5 year fixed rate

*Minimum 20% equity and new lending of \$100,000 applies to all Special rates. Terms, conditions and exclusions apply.

Special rates cannot be used in conjunction with any other offers or discount packages. Interest rate is current as at 15 February 2013 and is subject to change without notice. Westpac's current home loan lending criteria and terms and conditions apply. An establishment charge may apply and Low Equity Margin may apply. An additional fee or higher interest rate may apply to loans if the application is accepted but does not meet the standard lending criteria. Westpac New Zealand Limited.



Pop in and talk to the team at Huapai branch today.

the Riverhead

Although some could do with rain, we're loving the summer and what better way to enjoy it than sitting on the outside decks at The Landing under the shade of the giant oaks just taking in the view. Sundays are going off down here in The Boat House with live Blues at 2pm, we now have two bars, the Boat House Grill, and our impressive BBQ called 'Old Smokey' churning out a stunning mixed grill with quality steak, chicken & salads as well as plenty of other choices....

Coming Events - Blues in the Boat House

Sunday 24 February Swamp Thing, these two unique musicians come together bringing a wealth of experience, passion and love for their craft to make blues flavoured music. With interesting crowd participation and a lively stage presence this is not to be missed.

Sunday 3 March The Recliner Rockers, who isn't impressed by the uniqueness of standing on the double bass, getting a three year old to strum, or playing behind the back while keeping true to the music...

Sunday 10 March The Hipshooters were formed in Auckland in 1993 and moved to Brisbane, Australia in 1995 where they have become firmly established regularly playing at all the Major Blues Festivals, and releasing three independently produced CD's. They have also picked up two Blues Awards in Australia for Best Band and Best Song for 2002.

Monday 4 March, 7pm

To celebrate the arrival of the "Girls with Guitars" tour in Auckland, the Auckland Blues Club and The Riverhead are proud to announce "Boys with Guitars", some of the best Auckland blues guitarists struttin' their stuff for the girls, who will be there checkin' out the talent. Featuring Black Dog, Stingray, The Flaming Mudcats, Dean "Honey Boy" Morris and Mark "Fatt Max" Hill, this quick fire show is bound to have fireworks, and who knows how it will end? It's FREE to get in, the Boat House Grill will be open or make a booking in The Landing for dinner by calling 09 412 8902.

Taking up where Misada left off

The jungle drums have been busy, as we are still awaiting signage, for those in the know, Ruby's Winebar and Grill in Huapai, is hitting the spot, with a reasonably priced tasting plate and grill menu created by Armonde Aitken (previously of Papermoon, in Mairangi Bay) and desserts to return for again and again... that apple pie and crême bruléeSeating around 90 (70+ in the restaurant, ~20 in the "lounge"), easy parking, and yes, BYO Wine in the restaurant, we are ideal for both small and large groups - private functions, celebrations and weddings. We are featuring some amazing DOT ART by Robianto, so pop in for a view, and an end of day beer or after movie dessert, Wednesdays, Thursdays, Fridays and Saturdays, kitchen open from 4pm, and Summer Sundays from 3pm, we are open for wine, crafty" beers and moa original on tap, with tasting plates available all day

3 Matua Rd, Huapai - 412 7127



"A good beginning lasts a lifetime".

For an education fostering *confidence* and an *eagerness to learn* and explore, Country Bears is the place to be.

Our diverse rural property provides a *wholesome* environment for *creative and inspiring life lessons*, an endless route for exploration which develops a *love* for the earth, nature, and towards healthy living.



Early Childhood Centre
Est. 1993
www.countrybears.co.nz
(www.facebook.com/cbearsecc)
79 Oraha Road, Kumeu.

2013 is our 20th Anniversary!

Our 20 years of experience provides an eye for social change and influences upon our children, which enables us to support/apply a grounding platform built around the simplicity of our core values.

To acknowledge and celebrate the support of our local community, we are offering our **20th anniversary special rates for new enrolments, for all of 2013.**

For Further enquiry, ring Rita on 4128055



Be warm this winter-wood is good

Watching real flames and the feel that crackling heat has been the nicest feature of a wood fire for thousands of years. Now a modern clean burning wood fire is not only good for the environment, it is the most economical way of heating your entire home. Wood is a sustainable fuel source, it is carbon neutral, readily available and can warm your home to levels that would be difficult and expensive with other heating options. Grasslands is proud to promote a range of clean air approved New Zealand made wood fires that meet today's tough standards, yet produce more heat and burn much cleaner. Power cuts – no problem, some wood fire's even have a cook top to keep you going when the power goes off. Call and see the Grasslands team at 20 Shamrock drive in Kumeu to discuss your heating requirements: 09 412 7880F: 09 412 7075E: kumeu@grasslands.co.nz

Kumeu squash presents 'red dot' nights

Kumeu Squash is gearing up for another fantastic year of squash with the 2013 season of 'Red Dot Nights'. These nights are aimed at adult players that are either new to squash or experienced players that are new to the Kumeu area. Red Dot Nights run every Thursday night from 6:30-7:30pm during term 1, starting on the 7th of March and finishing on the 11th of April. We try to keep things pretty informal and have some fun, so it is a great way to learn how to play squash. Red Dot Nights include coaching from club members, and we have racquets available to borrow if required. Bring non-marking shoes and \$10 per session. Kumeu Squash is located on Access Road before Kumeu Vets.

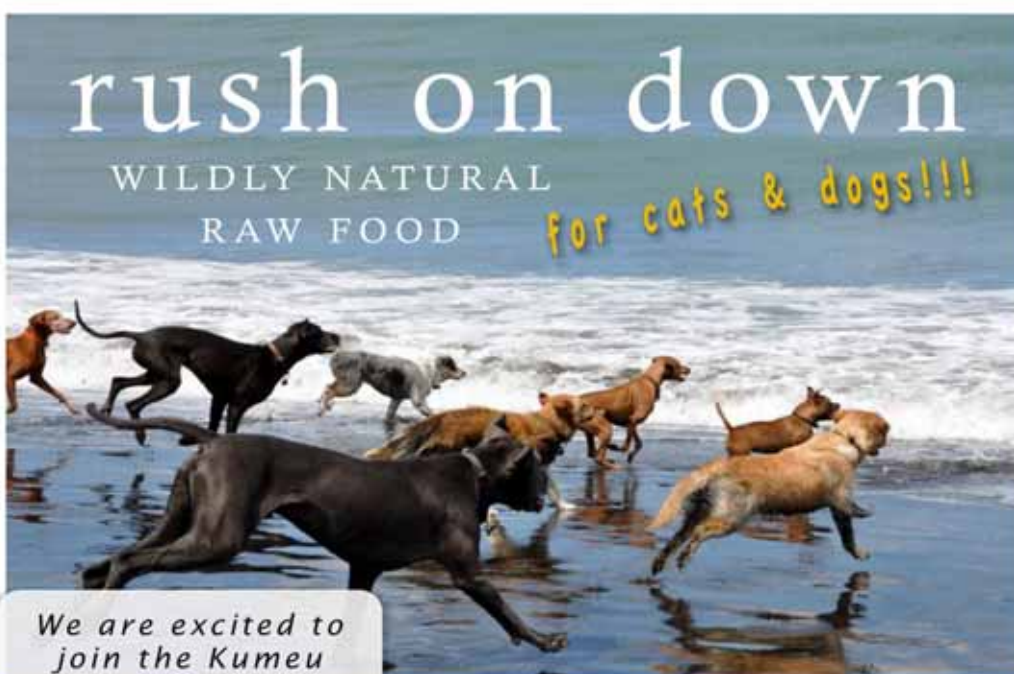


Lions book fair

Huapai-Kumeu Lions will be holding a Book Fair in the Kumeu Community Centre on Saturday 13 April and it welcomes donations of unwanted books which can be left at the Kumeu Information Centre or at Sunnyview Orchards on Highway 16 or at Huapai Hardware at Waimauku. The Book Fair is a great community occasion for obtaining fresh reading material at bargain prices. All books are sold for \$1 or \$2 and there is always a wide range of genre available including many good-quality children's books. The Book Fair is from 9am until 2pm on Saturday 13 April and Lions will be sharing profit with the Riverhead Scout Group who will be assisting on the day. Lions appreciate the support in the form of donation of books and making purchases on the day with all the profit going to the local community.

Berba festival

Join the team at Soljans Estate in Kumeu Wine Country over the Easter weekend 30 March to 1 April to celebrate the Croatian grape Harvest, 'Berba'. At Soljans you'll also discover Croatian people are as passionate about music as they are about wine, with traditional folk dancers performing on Sunday and Monday from 3pm. Live music will be played from 12pm-3pm on Sunday and Monday. To see how a busy, well established winery operates, go on the daily tours at 11am and 1.30pm and get some inside knowledge from Tony Soljan, owner of Soljans Estate Winery. The cost per person for the tour is \$5 but includes a tasting of Soljans Reserve wines along with the 'Novo Vino'. The Berba Festival, this Easter at Soljans Estate Winery, State Highway 16, Kumeu. You couldn't get much closer to Croatia unless you went there. www.soljans.co.nz



We are excited to join the Kumeu Community!

THE KUMEU MEGA STORE

250 Main Rd, Kumeu
(09) 281 0555

m-f: 9am-6pm
sat: 9am-5pm
sun: 10am-6pm



Stores in Kumeu, Grey Lynn,
Glenfield & Ellerslie

www.rawessentials.co.nz





Set on 2050 square meters this premium flat site is zoned for residential/commercial use. The property has excellent access off Main Road and due to its size qualifies for development. A three bedroom bungalow and two skyline buildings offer options for rental income during consenting through Rodney Ward, Auckland City Council. Mains water connection and Town Sewage are at the gate. 351 Main Road, Huapai.

BY NEGOTIATION **3 BEDROOM** **1 BATHROOM**
GRAHAM MCINTYRE **0276320421** **LICENSED REAA 2008**
www.ljhooker.co.nz/16KH14



This warm, single level home sitting on a private flat 1.5HA of sheltered tree lined pasture has the WOW factor you have been waiting for! This quality built large home is made for family, friends, and entertaining. Situated down Huapai's prestigious "Matua Road" surrounded by multi million dollar properties, has many options that await your inspection. 250 Matua Road, Huapai.

BY NEGOTIATION **6 BEDROOM** **5 BATHROOM**
COURTNEY WOOD **0276880818** **LICENSED REAA 2008**
www.ljhooker.co.nz/15JH14



Lovely 1950's cottage with traditional rough cast plastering, situated on a flat rear section. This property makes for an excellent first home or investment prospect. If an easy DIY project is your thing, roll up your sleeves! There is plenty of potential to enhance and finish off the interior decorating with your very own personal styling. 32B Parakai Avenue, Parakai.

BY NEGOTIATION **2 BEDROOM** **1 BATHROOM**
DARREN RYDER **021307014** **LICENSED REAA 2008**
www.ljhooker.co.nz/161H14



This warm and welcoming home is located in Riverhead Village within walking distance to all local amenities. This lovely family residence offers a variety of living and entertaining options for all to enjoy as well as plenty of outdoor space to run, play and grow. Classic period features have been well maintained and treasured throughout. The home, this charming character bungalow is ready for its new owners to love and cherish. 11 Kaipara Portage Road, Riverhead.

BY NEGOTIATION **3 BEDROOM** **1 BATHROOM**
COURTNEY WOOD **0276880818** **LICENSED REAA 2008**
www.kumeu.ljhooker.co.nz/16FH14





Sunny, private, secure and situated in the heart of Huapai down a quiet cul-de-sac street. Make your move on this one, fast! The house and grounds are perfect for family living sitting on a lovely sun filled site with fantastic outdoor living. There is also a spacious garage, and garden shed, plenty of storage throughout the home, a lovely backyard with established fruit trees and vegetable garden. 25 Merlot Heights, Huapai.

BY NEGOTIATION **4 BEDROOM** **2 BATHROOM**
COURTNEY WOOD **0276880818** **LICENSED REAA 2008**
www.ljhooker.co.nz/15XH14



Highly desirable 1.8 hectare property with extensive shedding, options for more and a two bedroom minor dwelling . All ticked off by council this is a genuine opportunity to have home, grazing land, income, sheds and options for more sheds or more income. Whether a family or two families with a view to having "the good life" with a mix of grazing and growing options we would encourage your interest in this highly desirable estate. 16 Redhills Road, Massey.

BY NEGOTIATION **4 BEDROOM** **3 BATHROOM**
GRAHAM MCINTYRE **0276320421** **LICENSED REAA 2008**
www.ljhooker.co.nz/15ZH14



Lifestyle property offering a superb living environment and north-facing perspective. The home is big, offering four bedrooms + office, two bathrooms, workshop garaging and shedding on a hectare of gentle flowing land. Access off a central ROW the home delivers an entertainers dream. 198 Oraha Road, Huapai.

BY NEGOTIATION **5 BEDROOM** **2 BATHROOM**
GRAHAM MCINTYRE **0276320421** **LICENSED REAA 2008**
www.ljhooker.co.nz/16SH14



Here lies an outstanding opportunity to acquire a truly outstanding piece of Helensville History. Step into the Hallway and you are immediately aware this property is worthy of your attention with beautiful high ceilings and polished Kauri floors. The nostalgia of the 1900s is evident throughout the house. The main bedroom is of a generous size and has the very delightful 3 bay window complete with seating. 3 Garfield Road, Helensville.

BY NEGOTIATION **3 BEDROOM** **1 BATHROOM**
DARREN RYDER **021307014** **LICENSED REAA 2008**
www.kumeu.ljhooker.co.nz/16UH14





Established equestrian business called "Blagdon Equestrian Centre" is for sale offering a fair return, fantastic facilities and a lifestyle home that naturally entwines the business. This dressage training and livery facility set on 7.4 hectares of prime land minutes from Kumeu's CBD with a host of business chattels and an established income track record. 175 Foster Road, Kumeu.

BY NEGOTIATION **4 BEDROOM** **3 BATHROOM**
GRAHAM MCINTYRE **0276320421** **LICENSED REAA 2008**
www.ljhooker.co.nz/16NH14



Currently in 6 titles (with options for more, subject to council approval) and with one well presented bungalow, this is a prime opportunity to secure a slice of the development opportunity that Riverhead is delivering. Gentle fall, easy road access, no covenants, services at road side. Owners are comfortable with Developers terms and seek registrations of interest. 9 Princes Street, Riverhead.

BY NEGOTIATION **3 BEDROOM** **1 BATHROOM**
GRAHAM MCINTYRE **0276320421** **LICENSED REAA 2008**
www.ljhooker.co.nz/15GH14



Here's your perfect opportunity to do up and increase the value of this property in one of Auckland's most desirable and upcoming areas "Riverhead". This 2 bedroom, one bathroom home with a generous sized living area is in much need of some TLC. The back yard is sheltered, private and sunny also offering a garden shed. 25 Albert Street, Riverhead.

BY NEGOTIATION **2 BEDROOM** **1 BATHROOM**
COURTNEY WOOD **0276880818** **LICENSED REAA 2008**
www.ljhooker.co.nz/163H14



Extremely well presented family home in the heart of Waimauku offering generous living areas leading to north facing alfresco patio, pool and grassed area. Fully fenced with internal pool fencing the property links seamlessly with entertainment areas off the kitchen and lounge. Brick and tile profile the home is of a top standard. 1 Solan Drive, Waimauku.

BY NEGOTIATION **4 BEDROOM** **2 BATHROOM**
GRAHAM MCINTYRE **0276320421** **LICENSED REAA 2008**
www.kumeu.ljhooker.co.nz/165H14





Centrally located amid Helensville business district, this two level freehold commercial property makes a great investment choice for the savvy residential/commercial investor alike. There is potential to further maximise the residential returns from this property with a little creative planning and building work by way of adding a second upstairs unit (would be subject to council regulations and approval). 88 Commercial Road, Helensville.

BY NEGOTIATION **4 BEDROOM** **3 BATHROOM**
DARREN RYDER **021307014** **LICENSED REAA 2008**
www.ljhooker.co.nz/169H14



This lovely, affordable bungalow offers loads of charm and character The home has 3 bedrooms, plus an office area, a generous sized family living room, with polished floors, separate dining area with a cosy fireplace, 1 bathroom and a separate laundry. With the benefit of a large deck area off the kitchen, family entertaining all year round is made easy! 20 Alexandra Street, Riverhead.

BY NEGOTIATION **3 BEDROOM** **1 BATHROOM**
COURTNEY WOOD **0276880818** **LICENSED REAA 2008**
www.ljhooker.co.nz/13TH14



Situated in a glade off State Highway 16, this property offers the best of both worlds. This north facing home set well back from the road, offers four generous bedrooms, (master bedroom includes walk-in-wardrobe and large ensuite), one large bathroom and an additional shower/toilet area off the laundry. 264 State Highway 16, Kumeu.

BY NEGOTIATION **4 BEDROOM** **2 BATHROOM**
AARON LAWLER **0211643031** **LICENSED REAA 2008**
www.ljhooker.co.nz/15RH14



The owners have made it clear, this property will be sold. An outstanding opportunity offering significant value and history. This original 1920's Kumeu country estate is constructed with heart Totara weatherboard, is North-facing with an in-ground pool, tennis court, significant 180m2 barn, double garage, and office/sleepout and almost a hectare (2.4 acres) of intimate and private space to relax and un-wind. 288 Old North Road, Kumeu.

BY NEGOTIATION **4 BEDROOM** **2 BATHROOM**
GRAHAM MCINTYRE **0276320421** **LICENSED REAA 2008**
www.kumeu.ljhooker.co.nz/16HH14





Services are in place and a shared paved drive is also already for you to use! This tree-lined, gently sloping section has all the makings for an easy build. Covenants are in place, the section is suited to build a new "brick & tile" type house. To the rear of the property there is farmland and neighboring sports fields behind another mature tree-lined boundary.

152 Awaroa Road, Helensville.

BY NEGOTIATION

DARREN RYDER

www.ljhooker.co.nz/16QH14

LAND ONLY

021307014

SERVICES AT THE GATE

LICENSED REAA 2008



An opportunity to buy this wonderful, sunny family home, with extensive decks that follow the sun from dawn to dusk. Overlooking a mature established garden with native and exotic trees, offering privacy and character to the property. 32 Amber Place, Waimauku.

BY NEGOTIATION

COURTNEY WOOD

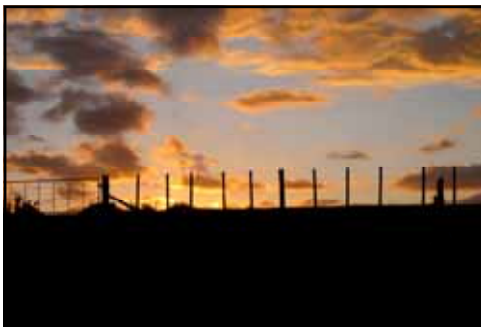
www.ljhooker.co.nz/154H14

4 BEDROOM

0276880818

2 BATHROOM

LICENSED REAA 2008



An opportunity of a life time is calling you from the tree tops! This is the perfect blank canvas on which to craft your stunning grand design without the typical restraints of urban living. The very generous 4.0700HA consists of land, power, and phone to site. 853 Old North Road, Kumeu.

BY NEGOTIATION

AARON LAWLER

www.ljhooker.co.nz/152H14

LAND ONLY

0211643031

SERVICES AT THE GATE

LICENSED REAA 2008



Sitting on 5 acres this country living is hard to beat. If it's Lifestyle you want with the added bonus of a two bedroom cottage currently rented, this is the property for you. Built to last, this solid north facing three bedroom family home still holds its old fashioned charm. 631 State Highway 16, Kumeu.

BY NEGOTIATION

WARREN MARSHALL

www.kumeu.ljhooker.co.nz/16DH14

4 BEDROOM

0212224255

2 BATHROOM

LICENSED REAA 2008

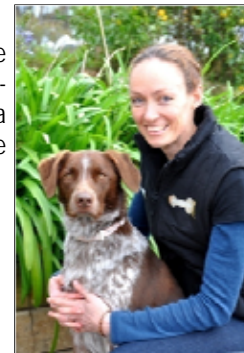


Raw essentials opens in Kumeu

Raw Essentials is delighted to open our fourth Auckland store in Kumeu! We have a simple philosophy for ensuring the best nutrition for your pet: Feeding a species-appropriate raw diet works wonders for health. Cats and dogs are carnivores. For thousands of years they have eaten raw prey. Their digestive systems (starting with the teeth) are adapted to a diet high in moisture and protein, but low in carbohydrates. It is only very recently in evolutionary history that our pets have made a dramatic shift to a dry, highly processed, carbohydrate-rich diet. The benefits of a raw diet include:

- Improved digestion (no more vomiting cats)
- Healthy coat and skin
- Weight control
- Reduced stool odour and volume
- Better dental and urinary health

Our experienced team of vets and nurses has helped hundreds of dogs and cats to a better level of health. With four Auckland stores, you can shop locally. See our website for information www.rawessentials.co.nz



Modifying an easement-current issues

The courts have power to modify and extinguish easements under the Property Law Act 2007. For example, you may be unhappy paying for a share of the maintenance of a right-of-way for the entire length if you only use one small part. Nothing, of course, prevents you discussing this with your neighbour and coming up with a solution without the court's help. For instance, you could agree on terms which reflect the actual arrangement more closely. Extinguishing an easement is more dramatic especially if someone's property rights are being lost as a result. Moreover, the court can compensate the person who loses such rights. This includes water easements which require common use and maintenance of pumping equipment and attention to the quality of the water. Luke Kemp LLB, BCOM, DIP. HORT. 25 Oraha Road, Kumeu, Auckland. Phone 412 6000 or fax 412 6016. luke@kempsolicitors.co.nz

SeniorNet Norwest speaker announced

The SeniorNet Norwest speaker at 10.00am on Wed 6th march at St Chad's Church Hall, Huapai will be Greg Hoskins, Senior Bio security Officer North/West Environmental Services with the Auckland Regional Council. Greg will be telling us about pest plants and animals and bringing live plants and stuffed animals to show us what to look for. Come join us, visitors and members and friends all made very welcome. \$3.00 entry with free tea/coffee and biscuits.

A Hoe-down-load of good whip-r's

The tickets are out and it is only your procrastination that is stopping you getting on down to Kumeu Cellars in Kumeu Village and purchasing your tickets for this years Hoe-Down. This thy slapping, toe tapping, country shin-dig is a favorite on the Kumeu calendar and sells out before the event. No door sales, so early ticket purchase is essential. All proceeds go to Kumeu Huapai Volunteers and in the proud tradition of Kumeu Fire Brigade is used to purchase extra equipment for the appliances and at station. Kumeu Fire Station is crewed 100% by volunteers who are not paid for their time and respond to over 300 calls a year. Business, friends and family all suffer as a result, however the camaraderie and spirit within the brigade is a tribute to the fun and the success of the Huapai Hillbillies Hoe-Down. Don't dilly dally, get your tickets today.



The real cost of developing land

I had the real privilege of talking openly and honestly with a couple of developers recently involved in multiple site works in Riverhead and Huapai and the cost of creating sections would start you thinking that this was a fools folly. We start by saying that developing land has real costs and compliance costs. The real costs have escalated greatly for two reasons, 1/ The cost of everything has gone up including fuel 2/ The works and infrastructure that council requires of a developer has gone up. The compliance costs have rocketed up with resource consenting and reserve contributions being up to 15% of the section cost and GST being another 15% therefore a compliance cost of 30% to local and central government. So before you point the finger at the developer and accuse them of making a small fortune, take a better look and who's taking the money and what you are getting in return. It is envisaged that the first stage of development in Huapai and Riverhead will have over 1000 sections delivering around \$60 million dollars to Council and the same to central Government. It may be pertinent to start asking the Local Board members how this money will be spent in these areas to create better environments and better services for their communities. Maybe a secondary school and a reliable local bus service might be a start.



Outdoor magic by Weathermaster

Midsummer. Mad friends. Legendary lunch.

Other outdoor options

Call 0908 10 27 10 for a free consultation www.weathermaster.co.nz

HUAPAI HILLBILLIES HOE-DOWN

Kumeu Volunteer Fire Brigade

SATURDAY, APRIL 27th 2013

7.30pm - 12.30am

★ Southern Cross Band ★ Licensed Cash Bar with Marian Burns

\$35.00

No Eftpos -- No BYO

Venue: Kumeu Showgrounds

Community notice board

Hello my name is Gary I am the Riverhead Tennis Coach. Tennis for term 1 will be starting this Saturday 16th February for 8 weeks until 13th April with no tennis Easter weekend (30th March) and a Rain day of 20th April. Cost is \$75 per child/adult for 8 weeks. Current classes are 6-8 year olds, 8-10 year olds, 11+ years old, and an Adult class. Times will be between 10am-4:30pm. You can email me on gazzaguns@yahoo.com.

Waimauku Tennis Club, get active, play tennis.

Another fabulous week of sunny weather, exercise, vitamin D and great company. Senior club champs are to be played on March 16th to 17th with the finals the following weekend. For more information please contact Jill Warren on 09 411 8037 or go to www.sportground.co.nz (keyword) waimaukutennis

COMMUNITY NOTICES ARE FREE OF COST AND CAN BE EMAILED TO gms@xtra.co.nz OR FAX 09 4129603

An appeal for help in Riverhead

I live at School Road, and in the last 2 weeks as the kids are leaving school I have had 3 occasions where a child has run across my driveway with me backing into it and I'm really concerned that I'm not going to see one in time. On Monday I got abused by a parent when her child shot across the front of my ute on a scooter as I was pulling out. Apparently my fault for using my driveway then. I watched the same kid go the rest of the way down School Road without checking any driveways before crossing them. Today a boy on a bike was looking at me as I backed in, and still went behind me, leaving me sticking out on the road. A lady in a blue toyota starlet wasn't impressed how I blocked the road. I can't change the time I am there, I'm dropping off from Kindy and then going back to work. I can't park on the road because there are no parks, so I have to use my driveway. I can either back in or back out, and I reckon backing in is safer. So I believe the kids need to be reminded they need to stop for a car, BECAUSE IT'S THE SAFEST THING TO DO. I'm happy for anyone to watch how I get in and out of my driveway and tell me how I could be doing it safer, anyone watching will see that I pull out very slowly because generally people can't see past the hedge. It's the same reason why we back into our driveway. It would be much easier for us to drive in straight and back out, but a lot more dangerous for everyone else. Another toddler this week in the news killed in his own driveway, I really don't want the next one to be in Riverhead.

Continued from page 1

Recently the companies Principal, Graham McIntyre was contacted by the Signage Control Officer asking for the billboard to be removed due to a complaint received. "This billboard is on private land, it has been in place for over two years showcasing events like best of the west, matua market and kumeu country market without issue and now that it promotes a real estate brand we are being asked to remove it. We had a similar situation when we erected the LJ Hooker marquee on Main Road opposite the village for the Kumeu Santa Parade and the complainant was said to be a local board member that owned a competing real estate company. Enquiries within council have suggested the same person may have used their influence in a way that could be considered blurring the lines of business and governance". What does happen if a local board member uses their influence to muscle a competitor, and what does the future hold. What questions do you have on the moral fiber of business involved in politics". Far be it for us to draw a conclusion, but we do ask the question "who will you be voting for in the next local board elections?"



**Plumbing
Laser
Whenuapai**



Your LOCAL for all:

- Roofing
- Plumbing
- Drainage
- Drain Unblocking
- Gas & Pumps

45 Brigham Creek Rd WENUAPAI

**CALL US NOW
09 417 0110**

"Totally Dependable"
www.laserwhenuapai.co.nz



Every Day In store Specials
Great Selection of Wines, Spirits,
Ciders, Beers & RTD's
We Cater for Small & Large Orders
Supply Keg Beer On Order
Gift Vouchers Available

**New Zealand's
Favourite Liquor**

Thirsty Liquor Huapai
301 Main Road, Huapai
Ph/Fax: (09)412 9614
www.thirstyliquor.co.nz



JET HOME
Sewage Treatment Plant

Sewage Treatment Systems
Concrete or Fibreglass Tanks
Full Installation & Servicing
Council Approved
Drainlaying & Excavation
Water Tanks, Pumps, Filters

Ph 09 415 1538 email info@jetwaste.co.nz

Abercothi equestrian supplies

We are a quality new and second-hand saddlery store. We are located at 105 Amreins Rd Taupaki just past the old OK Corral, we have a great selection of quality new and used bits, bridles, apparel, girths, saddle blankets, boots, large range of saddles and so much more. We also do cover repairs while you wait, along with washing, waterproofing, alterations, replace zips in chaps, restitch stirrup leathers. Owner Shelley Penny offers friendly knowledgeable atmosphere. Our web page is updated with new stock arrivals. Come visit us soon. www.abercothiequestrian.com Shelley Penny, Abercothi Equestrian, 105 Amreins Road, Taupaki (09) 8108 006 or 027 258 1805 Abercothi Equestrian on Facebook [bookabercothi.JPG](#)



Hopping good beer

Hops play a big part in our story here at Hallertau. Humulus lupulus to give them their full Latin name have been used in brewing since the 11th century and largely replaced a host of other herbs to flavour beer. The hop plant is a vigorous growing perennial which is normally trained to grow up strings in a hop field or hop garden. It's the female flowers that we are after as they impart flavour, aroma and bitterness to our beer. If you visit our brewery at this time of year you can see the hop plants snaking their way up our walls and these will make their way into our fresh hopped Saison. New Zealand hops were introduced by early German and British settlers 150 years ago and were well suited to the Nelson area which remains NZ's sole hop producing region. NZ hops are particularly sought after internationally as we are virtually hop pest free and thus the crop is spray free. Pop into Hallertau Brewbar for some hopping good beer, try our 5.3% Statesman Pale Ale with 100% NZ hops and malt or our seasonal Maximus Humulus Lupulus a 5.8% American hopped IPA.

Home & Kitchen **Mix n Match**
Specialty goods for home & kitchen

Do you know **Mix n Match** home
and kitchen is on **Facebook?**

Find us on
Facebook

www.facebook.com/www.mixnmatch

Like us on facebook
this February and receive some
beautiful Bennetts of
Mangawhai
Hand made chocolate
with purchase
Chocolate Tasting

Mon-Fri 10:00-5:00, Sat 10:00-4:00
Ph: 411-9586 Waimauku Village



Delivering More Bang
For No Up-Front Ka-Ching

KUMEU
VETERINARY SERVICES

**PETS, EQUINE
& FARM ANIMALS**
Veterinarians

ph: 09 412 9016
fax: 09 412 8499
email: admin@kumeuvets.co.nz
68 Access Road, Kumeu

AFTER HOURS EMERGENCY
(24/7) 0274 957 986
www.kumeuvets.co.nz

We invest at our expense in every relationship and every property we take to market.

In addition we have a range of exclusive advertising that delivers much more than any other local real estate office.



Phone 09 412 9602

COUNTRY LIVING REALTY LTD MREINZ
Licensed REAA2008
327 Main Road
Huapai, Auckland
Phone 09 412 9602
Fax 09 412 9603

Fancy a tour of India by motorbike?



Indian Motorcycle Adventures is a Helensville based company operating fully guided and supported motorcycle tours travelling on the legendary Royal Enfield Bullet 500s. Touring by motorcycle we avoid many of the hassles associated with Indian travel and open many doors into rural Indian life. In Rajasthan we meander through the back roads of this most romantic of Indian states. In a three week long tour, we take in the palaces, forts, temples and wildlife reserves of ancient Rajasthan at a relaxed pace. Our Himalayas ride takes us across the Tibetan Plateau and over the 2 highest motorable passes in the world. Experience Buddhist culture and spectacular scenery as we ride alongside the headwaters of the mighty Indus River.

Our tours take you straight to the heart of Indian life and will leave you with indelible memories. See our website: www.indianmotorcycleadventures.com or phone Steve or Lily 094206002

Kumeu massage clinic open

Experienced and current Warriors massage therapist Stacey McCormick (Dip Ther Massage+Sport) has opened a massage room at 8 Shamrock Drive, Kumeu (Kumeu Chiropractic building). Stacey covers relaxation, therapeutic, deep tissue, sport and pregnancy massage. Appointments are available between Monday-Saturday, with flexible hours. Gift vouchers are available also. Phone or text Stacey on 027 3444 780 or email her at staceymccormick@live.com for more information or to make a booking.



GET KUMEU
COURIER HOT
OFF THE PRESS
EMAIL
"subscribe" to
glms@xtra.co.nz

This way to a better future!



Stonewood Homes, now well established in the West Auckland area, prove it is possible to have the best of both worlds. "We will build you a beautiful home you'll love to live in today, while helping ensure our children enjoy a better tomorrow", explains New Home Consultant Kieran Walsh. "That's because Stonewood homes are highly insulated, feature eco-friendly appliances that use less power and water, and are built using renewable resources and non-toxic building materials. What's more, Stonewood's many years of experience and superior buying power ensure that outstanding design and quality, worry-free construction needn't cost the earth." It's easy to see why Kieran, who's from a building background and only joined the company in February 2012, has already notched up an impressive number of sales. "I love my job, particularly helping people realise their dream of a new home, and it's great working with a forward thinking company and great product." Phone Kieran on 027 478 5858

KUMEU STATIONERS

Shop 4D, 86 Main Road, Kumeu
Kumeustationers@xtra.co.nz (09) 412 5348

Back 2 School.
10% Discount on all School Lists.
Bring your school lists and we will assemble it for you!

Come along...
Sundays at 10am in the Waimauku School Hall

ABUNDANT LIFE

A church with a heart
for our community.

Check us out at:
www.abundantlifenz.org

ARE YOU CONSIDERING A CHANGE THIS YEAR?



**WHAT IS YOUR HOME WORTH?
FOR A FREE APPRAISAL ON YOUR PROPERTY CALL**

COURTNEY WOOD—027 6880818
Licensed REAA 2008
cwood.kumeu@ljh.co.nz

LJ Hooker Kumeu—327 Main Road, Huapai—Country Living Realty Ltd
Licensed REAA 2008
(09) 412 9602



The Fireplace
BAR & BRASSERIE
The Place to Wine and Dine

Open 7 Days
Lunch, Dinner & All Day Bar Menu

Lunch: 12.00 - 3.00 Dinner: 5.30 - Late
64 State Highway 16, Kumeu, Auckland
Ph: 09 412 6447
Email: info@thefireplace.net.nz
www.thefireplace.net.nz

Kumeu Chiropractic
adjust ♦ adapt ♦ thrive

Dr. Chris McMaster ♦ Dr. Nolene McMaster

412 5536
www.kumeuchiropractic.co.nz

8 Shamrock Drive, Kumeu

 MEMBERS OF NZ SECURITY ASSOCIATION
LICENSED PRIVATE INVESTIGATORS

limestone.
Private Investigators and Security Specialists

Call Karen or Wayne
021 51 991 6 or 0274 51 991 6
www.lrml.co.nz

Confidentiality guaranteed

Investigations, missing people, surveillance, body guards
security training, security audits, security risk assessments.

superValue
just what you need

Waimauku SuperValue
A-2, Waimauku Retail Centre
5-19 Factory Road
Waimauku, Auckland
Phone: (09) 411 7890/411 9495
Mobile: 021 048 3355
Fax: (09) 411 8050
Email: waimauku.sv@xtra.co.nz

Ask about our school lunch packs for Waimauku and Woodhill Schools. Available now!

HITEN DESAI
Store Manager

LANDEMAN & MINT PRINT
total print solutions

OFFSET & DIGITAL PRINTING

MONTHLY PROMOTIONS CALL THE EXPERTS
PH 828 1450

Email: sales@landeman.co.nz www.landeman.co.nz

Commercial, Residential and Business Sales


SAVERYS
M R E I N Z
licensed under the REA act 2008

Saverys Realty Limited
PO Box 79 361, Auckland
79 Tawa Rd, Kumeu, Auckland 0891

Telephone: 09 412 8284
Fax: 09 412 8286
Mobile: 0274 317 172
Email: david.savery@xtra.co.nz
david.savery@saverys.co.nz
Web: www.saverys.co.nz

David Savery
Dip Hort
Principal (Sales Division)



 **KUMEU PHYSIOTHERAPY**
Sports Injuries - Spinal Manipulations - Acupuncture

"YOUR premier physical performance partner"

Sports Injuries - Spinal Manipulation - Acupuncture
325 State Highway 16, Huapai. Open Mon to Sat. Ph 412 9063

STONEWOOD HOMES

The home you deserve


Kieran.Walsh@stonewood.co.nz 027 478 5858
11 Jezero Dr, Crestview Estate, Massey, Auckland
0800 86 00 00 | www.stonewood.co.nz

COTTE Phone: (09) 412 9908
Mobile: 021 760 681
COTTE MOTORS & AUTO ELECTRIX PO Box 117, Kumeu

MUFFLER & EXHAUST SERVICE
65 MAIN RD KUMEU

WOF REPAIRS THE BATTERY SHOP

Spectacular Muriwai

 MURIWAI GOLF CLUB (INC)

Overlooking the ruggedly but beautiful West Coast.

Membership · Casual Games
Functions/Wedding Venue

Free ph 0800MURIWAI, +6494118454
www.muriwaigolf.co.nz

Wicked chocolate brownies

200g butter, softened
 1 ½ cups sugar
 1 cup cocoa
 3 eggs
 ½ cup standard flour
 150g roughly chopped white chocolate
 (or ¾ cup roughly chopped walnuts)
 Icing sugar to dust

Using an electric mixer, beat butter, sugar and cocoa for 4-5 minutes until creamy. Add eggs one at a time, beating well after each addition. Stir in flour and chocolate (or chopped walnuts). Transfer mixture to a greased 20cm square baking tin. Bake at 150C for 1 hour or until the surface of the brownie appears cracked. The centre should almost appear uncooked. Cool in the tin. Just before serving, dust with icing sugar.



Bekah Mac Beauty opens in Huapai

Rebekah McDonnell has recently opened a new beauty salon Bekah Mac Beauty in Matua Road and will be having a ladies/business night with some drinks and nibbles for a "meet and greet". She also will be offering a complimentary shape and polish to those that wish and 15% off all products and bookings made on the night. This evening is open for ALL ladies so you are welcome to invite friends and family. It would be lovely to see you there. Rebekah, 412 93180 or 021 0233 8235

Is Europe on your list for 2013

With the range of products offered by the Globus family of brands there is sure to be something to suit your travel style and Budget. With over 85 years' experience and still in the same family 3 generations on, the Globus family of brands hold an enviable record within the industry and are one of the largest Coach Tour and river cruise operators in the world. If you are looking for a first class, escorted coach tour that will take you behind the scenes to spotlight what makes your destination unique, then Globus is the perfect choice. Travel by deluxe coach (with extra legroom and free WiFi), stay in superior hotels conveniently located to local sights and enjoy VIP access to the must-see attractions. For those on a budget or who prefer a more independent style of Travel, Cosmos offers all the benefits of group travel with plenty of free time to explore your way. Packages include hotel accommodation, some meals, sightseeing and plenty of free time. If you are looking to see Europe from a different angle, and the benefit of 'unpacking once', then gliding through the European rivers on an Avalon Waterways river cruise is just the answer. Deluxe, spacious staterooms, impeccable service and gourmet cuisine... it truly is a magical way to immerse yourself in the European way of life. Book any Globus or Cosmos tour or Avalon river cruise of 12 days or more by 27 March, and you will receive a FREE Digital Camera or E-Reader (one per couple), Single travellers receive a \$100 bookstore voucher (conditions apply). Other Early bird Tour discounts may apply for early payments. Book your tour in conjunction with fabulous Early bird Airfares out now. I can mail out some brochures to you, or pick them up from my home office, and I can help you plan the holiday of your dreams! Please have a look at my website; www.thetravelbrokers.co.nz/tanyafranklin. There is a FANTASTIC PRIZE to be drawn on 10 March for a Trip for 2 to Singapore with return flights on Singapore Airlines & accommodation to be won! Simply enter online. You can also sign up to my monthly newsletter from here. Click on the "About Me" tab to learn more! Phone Tanya on 411 9105 or email tanya.franklin@ttb.co.nz

Treat your taste buds at the fireplace

Friendly staff, warm atmosphere, and focus on great food full of flavors is proving a winning combination at The Fireplace. The Fireplace manager Rohit Chilana is excited about the new menus and the awesome response he is getting from the locals and says, "We are quite lucky to have two chefs with a diverse experience between them, their cuisine ranging from Traditional NZ to continental, enabling us to offer variety of dishes ranging from the NZ favorites like char grilled Steaks, Lamb Rump, Pork ribs, chicken breast, crispy skin Salmon to name a few, and continental dishes - Chili Chicken, Butter Chicken, Scallops Delight..... Our focus is on fresh food, simple flavors, well executed". This season's new menus are surely going to impress you with a focus on quality local produce. So, roll on in and enjoy the good times with friends and family at The Fireplace with great music, awesome food & fantastic specials. We are now open for BRUNCH on sundays from 10.00 am. SPECIALS: HUNGRY TUESDAY MENU All mains \$ 19.90 LUNCH SPECIAL FROM \$ 12.50 (PLUS FREE COFFEE WITH EVERY LUNCH MEAL) Tuesday to Friday 12.00- 3.00pm for further info contact us : info@thefireplace.net.nz. or visit: www.thefireplace.net.nz 64 Main Highway, Kumeu. Phone (09) 412 6447



REUSEABLES 4 refill not landfill



Bottles



Coffee Cups



Bags

www.kiwireusables.com

(09)810 9029 021 166 0608



Coming up...

- Get Ready For Summer Grilling Mexican Style with Tacos & Quesadillas.
- Homemade Sausages for BBQ Season.
- Japanese Grilling prepare for BBQ Season with recipes to impress!
- Make Your Own Halloumi Cheese for fresh Spring Salads.
- Summer Seafood BBQ.
- Make Your Own Camembert.

Book now!

Custom Corporate & Group bookings also available.

Hands-on cooking workshops in Muriwai

For information & bookings ph: 021 620 530 or visit... www.gourmetgannet.co.nz



Professional Landscape Gardening Service

www.gardensofeden.co.nz

- Garden Installations
- Garden Care
- Small Landscapes
- Hedging & Tree work
- Planting Design

Damian Strickett

TELEPHONE 09 810 9889 027 279 3508

Commercial Residential Lifestyle

Alphabet Art

Pre-schoolers and caregivers
An hour of fun and learning

Friday mornings 10 to 11 a.m.
Starting 19 October

at Riverhead Family Church
Cnr Arthur Street / Great North Road
Riverhead

By gold coin donation
Enquiries: Nina Bates
ph 444-1179
nina.bates@yahoo.co.nz

NZ MEDIUM

Renowned Spiritual Medium
Carin Anderson
Kumeu, Auckland. mb 021740331
<http://www.nzmedium.co.nz>

Your Local

for

The Landing Restaurant - come and enjoy our new Executive Chef's Menu. Now with a variety of steaks from our specialised grill section with a superb variety of other tasty options...there something for everyone.

'Blues in the Boat House' - FREE live Blues every Sunday from 2-6pm. Now with two bars, the Boat House Grill and our unique BBQ, 'Old Smokey' where Brendon takes care over each steak. See our website for info on who's playing each week.

'Boys with Guitars' - FREE Monday March, 7pm. Boat House, dine beforehand in The Landing or in the Boat House during the show.

Quiz Nights Wednesdays - 7.30pm, tons of fun with bar tabs & prizes. Bookings now essential

Book the Boat House for your next meeting venue - get your team away from the hustle. Enable them to think clearly in this motivating area which is perfect for planning the next year.



Serving the finest refreshments ever since a really long time ago

Cnr Queen & York, Riverhead. Phone 09 412 8902
www.theriverhead.co.nz



Country Living Realty MREINZ
Licensed Agent (REAA2008)
327 Main Rd Kumeu

MARTIAL
ARTS
KUNG-FU
REAL
ESTATE
AGENT

Listings Wanted

Residential
Lifestyle

+ Your House



Darren Ryder
021 307 014

Licensed Salesperson (REAA 2008)

New look Spark'n

Having been in the electrical business for such a long time, we decided to update our logo. Many of you will have seen the Land cruiser driving around Kumeu/Waimauku but look out for the van with the new logo on the side seen in the picture.

New logo but same personalised service. We are happy to come and look at any electrical concerns you may have and discuss any changes, renovations or upgrades. This seems to be the month of kitchen replacements and it is important to have a qualified electrician come in to disconnect, move and reconnect cables avoiding kitchen fires. I look forward to your call. Tony 021 (SPARKN) 772 756



The right people with the right advice



With a fresh start to the New Year, you may be considering an addition to your property to cater for your family and their growing needs. The best way to go about this is with the right planning advice, so that you have no issues that could potentially result in a costly Resource Consent exercise. Any Resource Consent avoided is a good one! The best free advice we can give you is to buy a 'Property File' from the Council so that you have all the info on your property that the Council also have. This file of information is available printed or in digital form, and includes the complete file information for any Building Consent or Resource Consent ever applied for on the property with full plans and details for each. All this for a mere \$48.00! Then at least you can see what they can see, and have valuable info on hand like previous site plans, drainage pipeline locations, what is actually consented on the property etc. We can then help from there to advise you on building coverage, impermeable surface area calculations, distance to boundaries and height in relation to boundaries and so on. All this info will assist with planning your project so that it goes through the Building Consent process without a hiccup and without triggering a requirement for Resource Consent in the process! Priceless advice that is free of charge... we just call it part of our quote and design process. Come and talk to the girls at KiwiSpanNZ, 329 Main Road Huapai 09 412 8455.

Senior net opening up new doors and options

Regular newsletters, monthly seminars. Come and join us for courses, tutorials, workshops and loads of fun. Classes for people with no computer experience keeping up with technology. Maximum of five students per class. TradeMe, word, excel, Facebook, Skype, Google, email and much more. Each course comes with a full manual, which is yours to keep! **Courses in:** introduction to computers, basic word processing, PC's, Macbooks, iPads. In a fun and stress free environment for people over 50 SeniorNet allows people to participate in the age in which we live in.

Contact: Jill Kouremetis Ph 810 7423, Ethel Yelavich Ph 412 8906, Jenny Barrowman Ph 412 7645, Ron Topping Ph 412 9257

Get off your butt

Over the last 100 years enormous social, environmental, technological and lifestyle changes have led to a drastic reduction in the amount of physical activity undertaken by humans, to the point where inactivity is damaging health. Research by the Ministry of Health has found that, physical inactivity is associated with 8% of all deaths in NZ. It is a risk factor for developing, cardiovascular diseases, type2 diabetes, obesity, cancers and osteoporosis. Physical activity can improve mental health and wellbeing, improve respiratory problems, Osteoarthritis, obesity/diabetes and reduce falls in older people. The direct costs of obesity to NZ have been estimated at over \$100 million per year. A 10% increase in participation in physical activity could result in 600 fewer deaths per year and save \$55 million in reduced health expenditure.

Physical activity is second only to smoking as a modifiable risk factor for poor health. Physical activity is today's "best buy" in health. It is one of the lowest cost interventions available; almost anyone can go walking at no cost. Evidence shows that 1/3 of adults in NZ are not physically active at levels sufficient to benefit their health.

NZ Guidelines for Physical Activity

- View movement as an opportunity, not an inconvenience.
- Be active every day in as many ways as possible.
- Put together at least 30 minutes of moderate intensity activity on most if not all days of the week.
- If possible add some vigorous exercise for extra health and fitness.

"ANY activity is better than none, and MORE activity is better than a little" For older people it is never too late to start. Whatever your age or no matter how inactive you have been, health benefits will begin shortly after becoming regularly active. 30 minutes maybe unattainable for some, so a "snackactivity" approach to achieving the 30 min goal will also get health gains. The greatest gains are when sedentary older adults become "a little more active a little more often". A small bout of 5 minutes is a start, like walking to the letter box, going to make a cup of tea. Physiotherapists are here to promote "safe participation" and therefore have a large role in assessing risk prior to participation and prescribing appropriate types and dosage of activity or exercise for those who are motivated to increase their physical activity levels. Adequate risk assessment and appropriate activity prescription is the key to success in any health strategy intent on tackling this global population health issue, and your physiotherapist has a vital role in delivering the end results. Kumeu physiotherapy, 325 State Highway 16, HUAPAI. Ph 4129063

www.kumeuphysio.co.nz

Magnolia Blue
Homewares & Gifts

www.magnoliablue.com ~ sales@magnoliablue.co.nz
82 Main Road/behind BNZ ~ Kumeu ~ (09) 4129663

BUMBLE BEE PROPERTY SERVICES

RIDE ON MOWER - MULCHER MOWER - WEED EATING
Commercial & Residential - Competitive Rates - Reliable Service
Garden Maintenance, Tree & Hedge Trimming, Water Blasting

Ph or text Scotty 021 027 93094
AH 09 420 9998
Sonniaandscottie@xtra.co.nz

Now teaching water confidence and swimming skills

Swim School

Parakai Springs
Contact Us: 0800 HOT POOLS (468 766)
swimschool@parakaisprings.co.nz

designhand .co.nz

taking your business to the world

Specialists in web design for small businesses

- Full design service
- Online shopping sites
- Existing website makeovers
- Hosting & domain name registration

0800 932 872 (0800 WEBTRAIN)
david@designhand.co.nz
www.designhand.co.nz

Pete Aalbers
Pete the Builder Ltd

Builder's Reports
Building Services
Project Management

Cell 021-980012
PO Box 21610, Henderson, Auckland 0650
Email pete@petethebuilder.co.nz

smith AND PARTNERS LAWYERS

We have a specialist property team ready to assist you with the sale and/or purchase of your property. Whether it's your family home or an investment property we can help. We can also help with setting up a trust or reviewing your wills. Contact us today for fast, friendly and professional service.

293 Lincoln Road
PO Box 104-065, Lincoln North
Waitakere 0614
Telephone 09 836 0939
Fax: 09 837 2500
Email: partners@smithpartners.co.nz
Website: www.smithpartners.co.nz

When only the best will do !

"That's why you need to call me if you are buying or selling a home"

Ph 09 412 9602
021 1643031
Aaron Lawler
Licensed REAA2008
County Living Realty Ltd

LJ Hooker KUMEU

Zash Hair

77 Waitakere Road
Phone: 021 814 663

WELLA PROFESSIONALS

NOR-WEST & KUMEU GLASS SERVICES

Specialists in Windscreens & Glazing

46 Main Road
Kumeu
PO Box 626
Kumeu 0841
Darren Hakesley

Phone: 412 9914
420 7818
838 1499
Fax: 412 7875
Mobile: 0274 965 596
nwkg@xtra.co.nz

G4M KUMEU

Work out in a fun, friendly environment

- Highly qualified instructors
- Child minding • Sunbed • Massage
- Fitness classes • Personal training

JOIN NOW!
PHONE 412 8932



Resource Planning Applications ● 198 Orahua Road, Kumeu
 Project Management ● PO Box 81-075, Auckland 0662
 Environmental Impact Reports ● Phone: 09 412 2016
 Subdivision & Engineering Design ● Fax: 09 412 2013
 Advocacy & Mediation Planning ● Mob: 021 637 772
Email: petesinton@townplanner.co.nz



Luke Kemp
 LLB, BCOM, DIP. HORT



Kumeu, Auckland
 P O Box 600 Kumeu
 Auckland 0841

Telephone 412 6000
 Facsimile 412 6016
 Email luke@kempsolicitors.co.nz



DAVID LLOYD MORTGAGES

David Lloyd
 Director



David Lloyd Mortgages Ltd
 Tel: 09 411 9251
 Mob: 027 411 9255
 Email: david@davidlloydmortgages.co.nz

www.davidlloydmortgages.co.nz



Grant Castle



P (09) 412 8239 | 106 Main Road, Kumeu
 M 027 299 7054 | E castlepanelbeating@orcon.net.nz

Computers from

\$295 + GST

Desktop and Notebooks



422 Main Road
 Huapai
 (Next to Ray White)
 09 412 9227
www.itiq.co.nz

*We know your IT matters
 Every aspect.*



Tony Boyd
 MANAGING DIRECTOR

P 09 411 8526
 M 021 772 756 (021 SPARKN)
 E sparkn@hotmail.co.nz

www.sparkn.co.nz



If you want..

COMMITMENT

INTEGRITY

RESULTS

SOLD

Call me now!



Warren Marshall—021 222 4255
 Licensed REAA 2008

327 Main Road, Huapai
 Country Living Realty Ltd
 Licensed REAA 2008

Burnetts

**SEPTIC & WATER
 TANK CLEANING**



**Your septic tank should be
 cleaned every 3 years**

(average family of four)
 We service all areas

Phone: **412 9210**
 or **0274 924 494**