

# kumeu Courier

FREE monthly community magazine for Kumeu & districts

## LAND TRANSITION FROM APPLE TREES TO SECTIONS

- House sales update
- Clubs all go
- Unitary plan submissions
- Music in vineyards

OPEN LETTER  
FROM BID SH 16

Circulation is 8000 print copies and 3371 opened and read email copies.

Editorial contributions are free from cost. Advertising starts at \$75 plus gst for a business card size.

Contact Sarah Cartwright on 0212507324 or sarahcartwright022@gmail.com

kumeuCOURIER/January 2014



# Intro

What a wonderful summer it has been! The weather has managed to provide many opportunities for family fun and I know that all those people camping over the Christmas and New Year's break were grateful for the abundance of sunshine (in between the few patches of rain). Summer has not come to an end just yet though and there are many upcoming events that should be marked on the social calendar such as Music at Matua on the 8th February with a very cool line-up of Trinity Roots, SJD (Full Band), Joseph & Maia and Laughton Kora. Following on from last year's success, they will be kicking off the day again with a coastal cleanup at Muriwai Beach in support of Sustainable Coastlines. Movies in the Parks are running from 24 January through to the end of March with an impressive programme of free movies and entertainment. Movies are on every Friday and Saturday evening all over Auckland and there is something for everyone with blockbusters to animation movies to home-grown flicks. The council is also running Music in the parks from Saturday 11 January through to Saturday 22 March, 2014's programme will revisit our favourite venues, as well as introducing some great new ones. Look out for their programmes where you will find a great line up of acts with genres from jazz and swing through to rock, blues, opera, alt-country, dub-reggae and more. Make the most of this wonderful weather while it lasts and pack a picnic to share with family and friends and make a day (or evening) of it.

Sarah  
Editor



# kumeu Courier

## Feature Stories

- 3 Landscape transition
- 4 Community notices
- 5 The brain game
- 6 NZ Police and NZFS
- 7 Property sales update
- 8 In brief - updates
- 10 Harmonious living
- 20 Area columnists
- 22 Open letter BID SH16
- 24 The web unspun
- 25 Gull comes to Kumeu
- 26 Music at Matua
- 27 P labs when buying
- 28 See yourself at 79 Oraha
- 30 Tribute to Michael Thorowgood

### Questions and feedback:

Sarah Cartwright  
P 021 250 7324  
E sarahcartwright022@gmail.com  
W kumeucourier.co.nz

Print run is 8000 copies through Nicholson print  
Email database is managed by Sublime NZ  
Cover photo is supplied by Focus NZ photo library

## Kiwi SPANNZ NEW GENERATION BUILDINGS

- Locally Owned and Operated
- Designed and Engineered in NZ for NZ Conditions
- Quality & Honesty with Zero Limits
- Any Building to Suit your Height/Length/Inclusions
- Your Entire Consent Process looked after for You
- Up to 30m Clear Span & up to 7m Stud Height

SHEDS, FARM & LIFESTYLE BUILDINGS  
COMMERCIAL & INDUSTRIAL BUILDINGS



**Body Builders Ltd**  
329 Main Rd  
Huapai  
Auckland 0810

PO Box 5 Kumeu  
Auckland 0841  
**T:** 09 412 8455  
**F:** 09 412 8458  
**FREephone: 0800 870 078**



**E:** [rodney@kiwispannz.co.nz](mailto:rodney@kiwispannz.co.nz)

0800 870 078

[www.kiwispannz.co.nz](http://www.kiwispannz.co.nz)

## THE LANDSCAPE TRANSITION

Thousands of hectares around the district are being transformed from apple orchards and grazing land into residential sections with continued developments happening on land in Huapai and in Riverhead areas. Whenuapai is the latest area to come under speculator interest with a wave of multi-cultural buyer interest sweeping through the area. Traditional land owners in the region who have previously lined the bank account with apple sales and grazing fees have cashed up to speculators and developers, keen on making full use of the new sewerage and town water infrastructure in these areas. Section sizes from 600 square meters are on offer with some section prices as low as \$325,000. With a predicted 2000 residential sections on offer this year it is anticipated that section prices will reduce as supply increases and demand stays somewhat static. A number of developers including CABRA Developments, Universal Homes and BA Group plus a handful of smaller companies are active in the area with many suggesting that Auckland Council are still dragging the chain on essential issues like water retention ponds and parks.



As the motor scrapers and diggers re-contour the land and the surveyors move through to peg and check levels we can't help thinking that residential developments at this scale will put enormous pressure on roading, schooling, social services and emergency management. There are strong economic benefits for the area and the majority of feedback is in support of growth in the region however this is tempered with a very real concern that the quality of life that is enjoyed today may be compromised by traffic queues, extensive school entry roles, compromised local service levels and an complete change

in living environment from semi-rural to urban living. For more information please contact the planning section at Auckland Council, phone 09 3010101



Come and join us at Nature's Explorers Kindergarten - the best kindy ever!

**Your child will thrive at Nature's Explorers. Here are a few reasons why:**

- Our warm and caring nature based learning environment
- Specialist early education and low teacher/child ratio
- Gorgeous home-like environment
- Competitively priced

Try us for a day...FREE!

Come and explore for yourself by phoning us on **09 412 8800** for a free day of discovery, exploration and fun!



[www.naturesexplorers.co.nz](http://www.naturesexplorers.co.nz)

Ph: 09 412 8800





# COMMUNITY NOTICE BOARD

## SENIORNET PUTS YOU FIRST

Having problems doing what you want to do on your computer? Tired of waiting for one of your kids to come and help you? Keen to learn how to email, Skype, use Trade Me and Google? Can't figure out how to use your MacBook or iPad? Don't want to pay huge fees to an 'expert' to teach you? If you answered 'yes' to any of the above then SeniorNet is for you. Nor-West SeniorNet has a Learning Centre in Kumeu. Tuition given for PC's, laptops, MacBooks and iPads. Monthly meetings in Huapai with interesting speakers. Go to our website for everything you want to know about your local SeniorNet – [www.seniornet-norwest.net](http://www.seniornet-norwest.net) Annual membership fee is only \$20. Phone a committee member if you have any questions: Jenny 09 412 7645, Ron 09 412 9257, Stan 09 412 9650

## NORWEST GARDEN CLUB

Both new and experienced gardeners are invited to attend the Norwest Garden Club's first meeting for 2014 on Wednesday 26 February at 7.30pm at the Kumeu Community Centre, Access Road. Learn from a knowledgeable speaker and enjoy an exchange of gardening ideas (and supper). Entry \$3 – contact Annette Billington for more details ph 09 412 7558

## FRIDAY NIGHT CLUBS ALL GO

For a number of years a Friday Night Club for children aged 7-12 years has been run at the Riverhead Family Church, Cnr Arthur and Great North Road, Riverhead. This has continued in 2013 and will continue in 2014. The programme runs during the school term from 7pm – 8.30pm on Friday and costs only 50 cents. The programme includes lots of games, activities, supper and prizes. Please note that the programme will end on Friday 6th December this year. If you would like to know more please call Gordon Miller 09 627 6413 and Anna Gordon 0211670447.

## POLESTAR PILATES

Riverhead Hall, Starting Monday & Wednesday 3rd and 5th February, 10.30 – 11.30am. Muriwai Studio, Beginners thru intermediate Thursday 9.00 – 10.00am. Small classes, suitable all ages, women and men. Whole body toning, stretching, breathing, muscle release, spine flexibility & core strength exercises. Hands on guidance. Relaxing and rejuvenating. Beginners basics- 5 sessions @ \$65. Single group session \$15. Private sessions - \$35. To book your space call me, Gaylene Earl Ph 411 5416 or email [gaylene@focusnewzealand.com](mailto:gaylene@focusnewzealand.com)

## MEET MAGGIE SUEN

Nor-West SeniorNet starts the year off with a seminar from a SeniorNet sponsor, Vodafone. Maggie Suen, one of Vodafone's Key Account Managers will talk about the special relationship between the two entities plus an explanation of 'Vodafone Red', what is Vodafone TV and some information on 'the latest and the greatest'. To learn more come along to St Chad's church hall, cnr Matua and Oraha Rds, Huapai on Wednesday, 5th February at 10am. All are welcome, you don't need to be a member. \$3 to cover hire of hall and morning tea.

## CLUB CONTACT FILE

Girl Guides	09 412 5821
Huapai Lions Club	09 412 8950
Kumeu Arts Centre	09 412 5668
Kumeu Band	09 834 1088
Kumeu Cricket Club	09 412 9188
Kumeu Floral Art Club	09 411 7125
Kumeu Freemasons	09 411 8552
Kumeu Pony Club	09 834 6660
Kumeu Racquets Club	09 412 9759
Kumeu Rugby Club	09 416 9181
Muriwai Lifeguards	09 4118055
Norwest Dog Training	09 833 9053
Quilters	09 412 8088
Riverhead Outdoor Bowls	09 412 9755
Senior Net Nor West	09 412 7645
Waimauku Lions Club	09 411 5399
Waimauku Outdoor Bowls	09 412 7352
Waimauku RSA	09 411 7532
Waimauku Scouts & Keas	09 411 9449
Waimauku Tennis Club	09 412 7463
Waitemata Clay Target	09 412 9910
Western United Netball	09 412 6420

CALL Your Friendly Bin Company!



**MR BINZ**  
Ph 412-9309  
Quality Bin Service  
Local Experts!

[www.mrbinz.co.nz](http://www.mrbinz.co.nz) | Ph 412 9309

**ANGLOMOIL**  
SUPERIOR LUBRICANTS

Your Local Oil and Lubricant Supplier!

Includes NetLube Guide Lubricant Recommended Tool

A guide to find the correct oil for your vehicle

Auckland Branch - 51 Nelson Road, Teapaki

Ph: 09-412-7818 Mob: 0274-929-714  
[www.anglomail.co.nz](http://www.anglomail.co.nz)

**natrapak**  
"packing nature into bottles"

**Natra Zone**  
Magnesium Plus  
for restoring balance  
Diet Supplement



Auckland Branch - 51 Nelson Road, Teapaki

Ph: 09-412-7789 Mob: 0274-985-227  
[www.natrapak.co.nz](http://www.natrapak.co.nz)

## BRIDGE IS THE BRAIN GAME

Bridge is a stimulating card game that keeps your mind active no matter what your age. As you grow older, and less mobile, bridge can be a great way to spend time with others. Bridge is a complex and challenging card game. Although it had lost popularity over the years, recently it is experiencing a revival by young people discovering the game. Playing bridge is very good for the mind, as it helps develop your analytical skills and sharpen your quickness. It is a curious fact that the two richest men on the planet; Bill Gates and Warren Buffet play bridge together often. People take up bridge as a hobby, since you play in pairs, you can join a bridge club and make friends. When you know how to play, how to bid, which card to play first, understanding what it means when other people bid, you can take part in this game to keep you mentally on your toes. Once you begin to play bridge, you will find yourself getting involved with the game and discover that you have a lot to talk about with others who are interested in the game as well, sharing tricks and tips. But first, you need to learn the card game. INTERESTED? Lessons start at the Waitemata Bridge Club in March, or if you just need a refresher as you haven't played for a while, why not join our 'Easy Going Bridge' class? Phone Denise 027-286-4396, email waitematabc@xtra.co.nz or visit [www.bridgewaitemata.co.nz](http://www.bridgewaitemata.co.nz).

## THE MIKE PERO EFFECT ON REAL ESTATE

Mike Pero Real Estate invests heavily in the ongoing success and wide distribution of Kumeu Courier every month. If you are thinking of selling your home or investment property, Mike Pero Real Estate Kumeu is the only real estate company that offers exposure within Kumeu Courier and is the only local publication that offers you advertising in full colour on a gloss platform to an estimated 15,000 readers through print, plus an additional 3,000 via electronic readership. This is just one part of the exclusive offers that is winning more business for Mike Pero Real Estate in the area. Some of the exclusive options that Mike Pero Real Estate Kumeu offers includes high definition professional photography which allows better looking web site advertising and a free TV commercial which is aired on TVONE breakfast or TV3 nightline. This sophisticated offering ensures that the maximum local, regional and national exposure is achieved without cost to the home seller. In addition to the free marketing offer we thought we would run some surveyed commission numbers past you, so that you can see first-hand what Mike Pero Real Estate could save you on a \$800,000 property sale compared to some others:

Bayleys	\$ 32,200 inc gst + marketing fee
Barfoot and Thompson	\$ 25,128 inc gst + marketing fee
Burmester Realty	\$ 23,575 inc gst + marketing fee
Harcourts	\$ 27,945 inc gst + marketing fee
<b>Mike Pero Real Estate</b>	<b>\$ 22,988 inc gst (marketing inc)</b>
Premium	\$ 32,200 inc gst + marketing fee
Ray white	\$ 25,702 inc gst + marketing fee

(Commission based on a sample provided by local companies, and may vary based on time and salesperson)

Mike Pero Real Estate has the smartest commission rate of \$22,988 and offers the most marketing support of any local company that we talked with. Obviously this was a snapshot at a point of time however we appreciate that Mike Pero Real Estate is making a significant service commitment to this area and are backing this up with a more sensible commission and marketing package that the others just can't compete with. If you are thinking about selling up we would suggest you shop around but ensure you have Mike Pero Real Estate Kumeu on your shopping list, it may save you thousands in commissions and the same in marketing costs..

# THANK YOU!

We would like to thank all our customers for your loyalty and custom during our first six months as FreshChoice Waimauku.

The team look forward to serving you for many more years!

## Check out our new supermarket

- Great range of quality fresh meat and produce
- Wide selection of New Zealand and international wines and chilled beers
- Large assortment of gluten free and organic products
- Great selection of bakery products
- Full range of Select, Signature Range and Homebrand products
- Over 25,000 grocery items instore
- Over 5,000 specials each week
- Check out our Community Fund
- The same great team providing you with quality shopping in your local community

We look forward to seeing you instore soon!

Vipan, Hiten and the team at  
FreshChoice Waimauku



5-19 Factory Road, Waimauku.  
Phone 09 411 7890.  
Open 7am - 9pm, 7 days.



# SAFER COMMUNITIES

Don't let boredom get your kids into trouble these school holidays. With the holidays almost coming to an end and everyone starting back at work, it's easy to get bored and become complacent, and this is when kids can find themselves becoming mischievous. If this sounds like you, don't make the wrong decision by taking your friends for a hoon while you are only on your learners or restricted license, and likewise don't get into a vehicle with a friend who doesn't hold a full license. Remember there is a zero alcohol tolerance for youth when driving. If you're going to the local shops, don't hang around all day if all you are doing is causing an annoyance. We are privileged to live in an area with a stunning beach, a mountain bike park, paintball, tree adventures and the list goes on, so get off the xbox and go and enjoy the rest of your holidays, but at the same time be responsible and stay safe.

In an emergency dial 111.  
For more information contact  
Melissa Haven,  
Ph 09 412 7756.



Happy New Year!

I hope you all had a great Christmas break.

This month's safety message is about us finding your house and then accessing it. When you call for assistance the responding fire crew can easily find your street but finding your house can be difficult. You can help by making sure your letter box has the correct street number clearly displayed. At night turn outside lights on so your house is clearly seen and send someone to the drive entrance to meet the fire crew.

The other big issue is access to your property. Make sure trees are trimmed to allow for a fire truck to drive down your driveway. Your clear drive width needs to be 2.5 metres with a clear height of 4 metres. If the truck cannot fit then we will need to carry all the equipment to the incident. A fire doubles in size every 60 seconds so a fire truck parked 100 metres plus away is going to have an impact on the outcome.

In an emergency dial 111.  
For more information contact  
Denis Cooper, CFO, WVFF  
Ph 09 810 9252.





**Jojo's  
Childcare Ltd**

Warm and nurturing environment  
Large play spaces for all ages  
Healthy, hearty, home style meals  
High quality curriculum  
Exceptional resources for play and learning  
3 Days free for 3 - 5yr olds\* *conditions apply*  
Nappies provided for Under 2's

Contact Sarah or Jo  
[www.jojoschildcare.co.nz](http://www.jojoschildcare.co.nz)  
09 412 5325

Corner Oraha Rd & State Highway 16, Huapai



# AREA PROPERTY SALES

ADDRESS	CV	LAND AREA	FLOOR AREA	SALE PRICE
<b>Helensville</b>				
Bradley Road				\$930,000
Blark Road	\$520,000	11278m2	130m2	\$572,000
Karaka Street	\$310,000	491m2	80m2	\$350,000
<b>Herald Island</b>				
Alison Avenue	\$490,000	946m2	90m2	\$706,000
Ferry Parade	\$1,700,000	935m2	325m2	\$1,960,000
<b>Hobsonville</b>				
Williams Road	\$340,000		114m2	\$480,000
Bannings Way	\$780,000	524m2	200m2	\$816,000
<b>Kumeu</b>				
Oraha Road	\$1,000,000	10133m2	319m2	\$1,460,000
Weza Lane	\$440,000	847m2	200m2	\$580,000
<b>Muriwai</b>				
Domain Cres		808m2		\$205,000
Motutara Rd	\$690,000	2047m2	200m2	\$750,000
Waitea Road	\$740,000	811m2	180m2	\$1,000,000
<b>Parakai</b>				
Parakai Ave	\$215,000	1011m2	80m2	\$295,000
Springs Road	\$235,000	405m2	65m2	\$265,000
Parkhurst Road	\$265,000	1060m2	100m2	\$349,000
<b>Riverhead</b>				
Cambridge Road	\$500,000	1624m2	160m2	\$730,000
George Street	\$355,000	778m2	60m2	\$579,000
<b>Waimauku</b>				
Muriwai Road		1600m2		\$460,000
Muriwai Road		495m2		\$505,000
Muriwai Road		1600m2		\$467,000
Sarah Todd Lne	\$550,000	1400m2	130m2	\$715,000
Buttercup Pl	\$570,000	2029m2	140m2	\$700,000
<b>Waitakere</b>				
Northfield Road	\$340,000	875m2	101m2	\$530,000
<b>Whenuapai</b>				
Waimarie Road	\$590,000	2119m2	150m2	\$645,000
Kauri Road	\$460,000	883m2	120m2	\$575,000
Fred Taylor Dr	\$510,000	809m2	150m2	\$600,000
Waimarie Road	\$690,000	2352m2	289m2	\$950,000

Disclaimer: These sales figures have been provided by a third party and although all care is taken to ensure the information is accurate some figures could have been mis-interpreted on completion. Furthermore these figures are recent sales over the past 30 days from all agents in the area.

“we charge  
2.95% not  
4% that  
others may  
charge”

“We also provide statistical data, free from cost to purchasers and sellers wanting more information to make an informed decision. Phone me today for a free summary of a property and surrounding sales, at no cost, no questions asked”

Phone

**0800 900 700**

**Graham McIntyre**  
Brand & Territory Owner

Mike Perry | REAL ESTATE

Mike Perry Real Estate Ltd Licensed REAA (2005)



## MONEY MATTERS

Interest rates look as though they're on the move. Some commentators are expecting increases later this month whilst most are thinking March. The timing will depend upon inflation figures due out shortly. We are working on a number of new loan applications for people looking to build. With the recent changes around construction loans being exempt from the low deposit restrictions this is a viable option for some. Some lenders are now offering no interest payments during the build process so this helps with cash-flow if borrowers are having to meet rent commitments while they are building. Of course, conditions apply. We can assist with free impartial advice on any of the above so please call or email to discuss.

Phone David on 09 4119251, mobile 027 4119255 or  
Email david@davidlloyd mortgages.co.nz



David Lloyd  
Phone 0274119255

# IN BRIEF

## UPDATES:EVENTS

### NEW YOGA & PUMP INSTRUCTORS FOR 2014

Yoga Classes: Tuesday and Thursday 9.30am. We would like to welcome Gemma (AKA Sitadevi) to our team. Gemma is an experienced yoga teacher living locally, and is qualified to teach beginners to advanced yogis alike. Gemma has been practising yoga since 1997 and teaching since 2008. Gemma loves to share yoga within our community and believes that it can be for everyone. She creates balanced classes which provide both the opportunity for challenge and also permission for rest. Each 60 minute class will include components of flexibility, strength, balance, core stability, relaxation and fun! Postures will either be held or flowed. Breath awareness is introduced throughout to support you in the postures and also to facilitate deep relaxation. We would also like to welcome back Miriam Reesink who will be taking our Pump Class on Monday 9.30am. Miriam will also be available for Personal Training. Miriam has many years of experience and we are looking forward to having her outgoing, bubbly personality back at Kumeu Gym. Phone 09 412 8932

### LOVIN' SUMMER

New faces join us at The Riverhead bringing even more international flair to the team.....Ian Braund is our new Head Chef who will be working closely

with Paul Jobin. Ian's background is a very sexy one, leading Cirque du Soleil's kitchen as they travelled around the world reinventing dishes and suppliers according to the country he was in. As well as cooking up a storm for some of the world's leaders, influential people & actors he looked after the performers themselves. We are also welcoming Grant Manson from Edinburgh, Scotland as Duty Manager. He has many years of experience from owning and running his own venue which mirrors The Riverhead in many ways. Orocco Pier is situated just outside Edinburgh in an historic village overlooking the water (and the Forth Bridges). Orocco Pier comprises of a bar, seafood restaurant and function centre specialising in wedding so he will feel quite at home at The Riverhead.

### OPEN DAY AT KUMEU GYM

Kumeu Gym & Indoor Sports Centre will be opening its doors to the community and surrounding areas for everyone to have a look at a professional fitness centre...for FREE. On Saturday 22nd and Sunday 23rd February Kumeu Gym and Indoor Sports Centre will be holding our first Open Weekend! Bring your training gear because we will be running all of our classes, indoor Netball games and Indoor Soccer games for FREE...keep an eye on our Website ([www.kumeugym.co.nz](http://www.kumeugym.co.nz)) as our timetable for the weekend will be up soon! Our awesome staff will be doing FREE Fitness Testing, Body Composition and Blood Pressures, they are also there to show you around

the gym and help you out with weight training if you want to give it a go. Everyone is welcome, meet our wonderful team, talk to the trainers and have a look at what we have to offer. We will be running a draw to win a 12 month Gym Membership plus spot prizes including free gym passes and free group fitness classes. There will be a free sausage sizzle and you can also enjoy food and beverages from our Bistro. GREAT MEMBERSHIP DEALS ON THE DAY!

### UNITARY PLAN SUBMISSION

The pressure of the 'Cleanfill' hearing a week before Christmas, and the normal Christmas family holiday plans, made for a full on end to 2013. I thought the four day hearing went well, the Commissioners were well informed before the hearing and the evidence presented by those opposing the Cleanfill proposal was covered very well. I have to thank all those individuals who took the time to attend the hearing and had the courage to have their say on the controversial Cleanfill application. Two full days presented by local residents at the hearing was exceptional. The Commissioners admitted it was the most passionate hearing they have had from a community. Announced delay by the Commissioners, is to resolve the different professional advice on site stability. The decision will come out in March I believe. The last month of the Unitary Plan submission is now upon us. If you are to make a submission, it must be done by Friday 28th February. A submission can be handed into the Auckland Council at Huapai, but make sure it's in by that date. It is the only opportunity you have to change the document and the future of the District and the scheme. The 'Special Housing Area' announcement by the Government is still of concern. The high density housing with little or no infrastructure identified or proposed will make it

Inspiration. Encouragement Experience.

Davis Funerals will create a funeral ceremony with the style and service that celebrates the life of your loved one.

  
Davis Funerals

Henderson 09 835 3557 [www.davisfunerals.co.nz](http://www.davisfunerals.co.nz)

Call John Schipper today for a free consultation or a friendly chat on the type of service you would like.

Len Gurney

Director

m: 0274 517 709 a/hrs: 09 416 9411

e: [len@northwestflooring.co.nz](mailto:len@northwestflooring.co.nz)

NORTHWEST  
FLOORING XTRA™

10 Shamrock Drive, Kumeu 0810

t: 09 412 8188 f: 09 412 8688 [www.flooringxtra.co.nz](http://www.flooringxtra.co.nz)



difficult for the project to be approved. The S.H.A. Planners at the Council have agreed to come to the community on the 5th February to discuss with the community what they propose. Prior to that meeting a group has been put together in the community to discuss infrastructure issues. With no plans for infrastructure from either Rodney District Council or Auckland Council, the community is faced with a Government/Council promise of 2000 more homes and no idea of infrastructure details or its timing. The Association will have to take issue with this aspect in the Unitary Plan submissions. I have received constant complaints from residents about how inappropriate the high density housing is on the Station Road triangle when there is a lack of schools, roading, bypass road, and reserves to make the proposal work. The increase in traffic will also have an adverse effect on the Kumeu & Huapai commercial areas. The meeting on the 5th February 2014 at the Community Centre will be our only opportunity to discuss with the Auckland Planners our concerns. Please attend.  
All the Best for 2014

Pete Sinton Chairman  
Kumeu-Huapai Residents & Ratepayers Association  
Ph. 412-2016 mob. 021-637-772  
e.mail. petesinton@townplanner.co.nz

## WHAT'S ALL THE FUSS ABOUT

**A FREE TV COMMERCIAL**  
**EXCLUSIVE TO MIKE PERO**

Reach Over 40,000 Viewers

List with us & see your home featured on either TV One Breakfast or TV3 The Paul Henry Show.™ This has a market value of more than \$6,000.\*

Mike Pero Real Estate Kumeu  
0800 500 123  
kumeu@mikepero.com

Mike Pero | REAL ESTATE

It's not every day you get to see your home on television, however it is on offer at no cost to property owners that list their home exclusively with Mike Pero Real Estate. The company will provide a number of complimentary marketing services including TV advertisement which is played on Breakfast TVONE or TV3's nightline. If you are considering marketing your home it would be prudent to contact Mike Pero on 0800 900 700 or 09 412 9602

## ARE YOU GETTING GOOGLED ?

Is your website using Google Analytics? Are you aware how powerful tracking data from your website can be? Do you think its time to turn your website traffic into useful business intelligence? The

New Year is a great time to start! Essentially Analytics is Google's method of tracking visitors who come to your website. This allows you to track how they found you, how long they came for, or if they are unique visitors. You can see what they looked at, what type device they were on, in fact you can see almost everything except what their eye colour is. We pride ourselves on being leaders in online data collection and analysis, as well as helping to educate New Zealand companies on the benefits data holds. Data is critical to online growth, if you learn to understand it, you can use it to grow visitors to your site and critically more sales! Check out [www.webwinks.co.nz](http://www.webwinks.co.nz) for more information about us.

## JAZZ IN THE VINES 16 FEB

Come and join Hospice West Auckland and the talented Leza Corban for an afternoon of fun, sun, relaxation and music. A relaxing afternoon at Davis Funerals private vineyard which represents a Tuscan winery experience. Bring a partner or the family and friends, a picnic and beverages for three hours of bliss. On February 16 from 2pm - 5pm at David Funerals, 150 Central Park Drive, Henderson, Auckland, Tickets essential at only \$20 per person. Phone 09 835 3557 or email henderson@davisfuner-

# Lovin' Summer at The Riverhead

The Riv's  
All you can eat  
Ribs  
Tuesday Nights  
from 6pm  
in The Landing Only  
**\$28pp**

Finger licking,  
lip smacking  
& downright delicious!

# Quiz Night

Wednesday's  
7.30pm

Starts 5th Feb

Get a team together and book a table. Best teams are diverse teams, so bring your mates, your kids, your oldies and your experts.

Bookings essential, some conditions apply.  
Phone today on 412 8902

THE TASTING SHED

Experience the most awarded restaurant in New Zealand's oldest wine region - Kumeu.

09 412 6454  
[thetastingshed.co.nz](http://thetastingshed.co.nz)

## KUMEU HIRE LIMITED EQUIPMENT AND MACHINERY

### KUMEU EQUIPMENT

108 Main Road  
Ph 09 412 9905  
Fax 09 412 9965  
Hrs Mon-Fri 7am - 5pm  
Sat 7.30am to 5pm  
Sun 8am -4pm

### HELENSVILLE

41 Mill Road  
Ph 09 420 9905  
Fax 09 420 9015  
Hrs Mon-Fri 7am -5pm  
Sat 7.30am to 12pm  
Sun Closed



Visit us this weekend at  
**SOLJANS ESTATE  
WINERY & CAFÉ**

Gift Shop  
Functions  
Weddings  
Wine Tasting  
Coffee & Lunch

Ph: 09 412 5858 | 366 State Highway 16, Kumeu  
[www.soljans.co.nz](http://www.soljans.co.nz) | [cellar@soljans.co.nz](mailto:cellar@soljans.co.nz) | Open 7 days

## HARMONIOUS LIVING

Well so far, Summer has been beautiful! I was wracking my brains about a timely tip for this month, and then I thought "just spend it with the family". It's so important to just hang with family and friends especially at this time of year. Don't fret about the cupboards that need organising, or the garage that's getting bigger with clutter. It will still be there, and in the meantime enjoy the weather, your friends and some down time. But.... if you really want to do something to become more organised in the home, check out your linen cupboard and prepare it for the cooler weather. How many blankets do you have and do you need that many? If you don't have the space in your linen cupboard, store the blankets on an empty bed (flat as if they going to stay on the bed). I'm always surprised at how many sheets & mismatched sheets my clients have. My opinion is that a bed only requires 3 pairs maximum, preferably matching sets. Store the top and bottom sheet in the matching pillowcase. It really saves time when trying to sort through the linen to get some sheets that fit the bed. And towels, give your tattered and stained ones to the SPCA and get yourself some new ones. You deserve the good stuff in life, so start treating yourself with respect, dry yourself off in delicious fluffy spa towels that actually cover your body. Remember, keep what you love and use and release the rest. Please check us out online [www.harmoniousliving.co.nz](http://www.harmoniousliving.co.nz) or on facebook for further help.

## HELPING CLIENTS SO THEY DON'T GET A SHITTA

The team here at KiwiSpanNZ are always looking for ways to help our clients get the building that they desire, with dimensions to suit, and doors/windows placed to suit their needs and orientation on the property. Even the colours they want, no matter how many they would like to choose! We can create a quote and plans for you by viewing a building from the extensive gallery of photos, either on-line or in the office. Select your building type, dimensions, number of roller doors or sectional doors, personal access doors, windows ranch sliders and colours. Did you know you can also go to our website and create your own building design? Create your own shed, house or Industrial building using our new 3D designer. The KiwiSpanNZ online 3D design software was developed to help you design and visualise your new building. You can set the dimensions to suit, add in doors/windows and even colours. See what your next building will look like! Simply click send when you are done, and we will get your design so that we can come back to you with the price, with the components all broken down into Kitset, Build and Slab. Your Shed – Your Design – Your Way ... It couldn't get any easier than that. See you at the Kumeu A&P Show in March... and remember our Showroom in Huapai is open Mon-Fri 8.30-5.00pm, or we can meet you outside of these hours by appointment. Phone 0800 870 078

## IS IT TIME TO REVIEW YOUR FINANCES ?

Happy New Year to you all. As we all look to the year ahead now is the perfect opportunity to review your financial situation and ensure that you are making the most of out of your current mortgage. Rates are on the increase this year, with the first rise tipped for late January or the end of March. If you are floating and taking advantage of the current rates on offer now is the time to review your circumstances. With the right mortgage structure



**SOLARCRAFT**  
PV SOLAR SYSTEMS  
*Sustainable, renewable energy*

**\$0**  
on your next power bill!

Contact us NOW to find out how...  
09) 427 9026 FREE 0508CRAFTY  
027) 467 7279 [info@solarcraft.co.nz](mailto:info@solarcraft.co.nz)  
[www.solarcraft.co.nz](http://www.solarcraft.co.nz)



and by using a small revolving credit facility you could potentially save \$1,000's of dollars a year in interest costs. Don't leave it too late, call me now for a free review of your current mortgage and take a look at all the options available to you. Mark Greene, Mike Pero Mortgages 09 215 6990 or email mark.greene@mikepero.co.nz

## FANTASTIC CRUISING SPECIALS

Two Fantastic Holland America Line Cruise Specials: Book & Pay by 28 Feb, subject to space being available, these will sell quickly!

Alaskan Inside Passage on the MS Zuiderdam for 7 nights, departing 07 June from NZD \$ 2479 per person Twin Share for a Veranda Stateroom (Oceanview Staterooms sold out), or just NZD \$ 2985 per person for a Suite! Round Trip ex Vancouver, see Tracey Arm, Juneau, Skagway, Glacier Bay National Park, Ketchikan, BONUS USD\$150 on-board credit per stateroom, or receive USD\$250 when booking the suite.

Adriatic Dream on the MS Noordam for 11 nights Departing 12 July from NZD \$ 3175 per person twin share for an Oceanview Stateroom, or NZD \$ 3629

per person for a Veranda Stateroom Ex Rome, to Messina, Valletta, Agrostoli, Kerika, Corfu, Dubrovnik, Kotor, Korcula, Split, and finishes in Venice. BONUS: Signature Beverage Package. Allows you to have up to 7 drinks valued up to USD\$7 per person per day (so not exceeding USD\$49 per person per day) for free.

Please contact Tanya Franklin, your local Travel Broker for any of your travel needs on 09 411 9105, mobile 021 254 9169, or email: tanya@ttb.co.nz

Make an appointment to see me in my home office in Waimauku to chat about your next holiday!

## SOLJANS FIZZING ON FUSION

Soljans Estate Winery is fizzing with excitement over the launch of its new Sparkling Sauvignon Blanc into their infamous Fusion Sparkling wine range. The Marlborough Sparkling Sauvignon Blanc will be the third wine to join the multi-award winning Fusion Sparkling Muscat and Fusion Sparkling Rosé. Taking on board recent capsule innovations, the Sparkling Sauvignon Blanc is bottled under screw cap. This not only allows for easier opening but enables the wine to be resealed once opened,

ensuring it stays fresher for longer and retains those exuberant Marlborough flavours for days. Tony Soljan, Managing Director of Soljans Wines Ltd, says "It was a natural step for us to launch a Sparkling Sauvignon Blanc into our Fusion range. We have the technology and production facilities on site and expertise in producing award winning, sparkling wines. This wine will be a great addition to our popular range and an appealing summer option for our café and cellar door customers as well as our function clients." Made from Sauvignon Blanc grapes sourced from the Wairau Valley of Marlborough, Soljans Winemaker, Aaron Bilcich describes the wine as having "gooseberry, citrus and melon aromas that literally leap out of this delicately sparkling Sauvignon Blanc. These vibrant aromas are complemented by a palate of lusciously, ripe, tropical fruit balanced by a clean, crisp finish. The wine is perfect for drinking on its own for matched with your favourite summer food." Soljans Estate Fusion Sparkling Sauvignon Blanc has a recommended retail price of \$19.95 and is available at selected retail outlets and, of course, Soljans Estate Winery's Cellar Door and Café. Soljans Estate Winery, 366 State Highway 16, Kumeu, Auckland. Email us cellar@soljans.co.nz

# The Best Never Rest

Mike Pero Real Estate Kumeu



**Mike Pero Real Estate Kumeu**  
0800 500 123  
kumeu@mikepero.com

Mike Pero | REAL ESTATE



FINDERS KEEPERS... FIRST IN BEST DRESSED!

3 1

Enquiries Over

5 Puriri Street, Helensville  
Enquiries Over \$449,000 - Viewing by appointment

The home is well-positioned with a northern aspect to capture morning sun out front and the evening sun for entertaining in the back yard. Step into the Hallway and you are immediately aware this property is worthy of your attention with beautiful high timber ceilings and polished Kauri floors. 5 Puriri Street is nestled amongst other home owners with Villas of a similar heritage you will find this home a delightful place to live and enjoy all that Helensville has to offer.



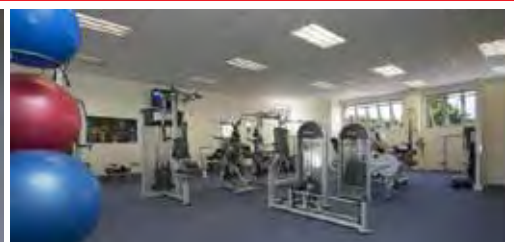
Darren Ryder  
021307014

Mike Pero Real Estate Limited

[www.mikepero.com/MPRE25476](http://www.mikepero.com/MPRE25476)

0800 500 123

[www.mikepero.com](http://www.mikepero.com)



BEAT THE SHARE MARKET...GOOD OLD BRICKS AND MORTAR

Enquiries Over

11E Factory Road, Waimauku  
Enquiries Over \$525,000 - Viewing by appointment

Ground level unit with 190m2 floor space and 1/3 share of 280m2 of land & is ideal for a range of commercial purposes. Currently leased with a secure tenant in place representing a strong return leased with a 2 x 3 year rights of renewal. The building is currently used as a the local gym for the people of Waimauku and surrounding areas. Set within the iconic 'Waimauku Village Shopping Centre' this is a fantastic opportunity to purchase within this sought after complex which is located in the Waimauku township with easy access to the highway. The modern complex provides drive through accessibility for delivery trucks, with ample visitor and occupant parking space.



Darren Ryder  
021307014

Mike Pero Real Estate Limited

[www.mikepero.com/MPRE25352](http://www.mikepero.com/MPRE25352)

0800 500 123

[www.mikepero.com](http://www.mikepero.com)





PRIVATE PEACEFUL... JUST PERFECT!

7 3 3

Enquiries Over

80 Mahana Road, Waimauku  
Enquiries Over \$1,749,000 - Viewing by appointment

The spacious beautifully put together 499m2 home is of exceptional quality with flowing interiors from the kitchen to the dining and living area. Formal and relaxed garden areas allow for outdoor entertaining with stunning rural valley views.

SOME PROPERTIES SPEAK TO YOU, THIS IS ONE SUCH PROPERTY

5 plus bedrooms - 2 living areas - Formal living/dining - Chef's kitchen - Office/6th bedroom - Gymnasium/Music room - Guests wing - Kids wing - 3 bathrooms - And a lovely powder room for the girls

[www.mikepero.com/MPRE25026](http://www.mikepero.com/MPRE25026)



Darren Ryder  
021307014

Mike Pero Real Estate Limited

0800 500 123

[www.mikepero.com](http://www.mikepero.com)



WARNING!! THIS HOME CAUSES LOVE AT FIRST SIGHT!

3 2 2

Enquiries Over

53 Hamilton Road, Waimauku  
Enquiries Over \$975,000 - Viewing by appointment

- 162m2 3 x Bedroom main dwelling with 2 Lounges, 2 bathrooms and an open plan kitchen/dining that opens out onto a lovely deck for good year round indoor outdoor living/entertaining.
- 22m2 large separate Bedroom above garage with its own toilet.
- 48m2 separate studio away from the house with bathroom etc, this studio could be used for a small professional business premise, consultation room's, creative space, music rooms or what have you.
- 25m2 Double Garage with 24m2 workshop & Double carport.
- 1 x grazing paddock with Bore and Windmill.

[www.mikepero.com/MPRE2529](http://www.mikepero.com/MPRE2529)



Darren Ryder  
021307014

Mike Pero Real Estate Limited

0800 500 123

[www.mikepero.com](http://www.mikepero.com)





CONTRACTORS D.I.Y IN COASTEVILLE - RIVERHEAD

5 3

By Negotiation

62 Barrett Road, Riverhead  
By Negotiation \$1,295,000 - Viewing by appointment

If you are up for a challenge, this property lends itself to heaps of potential. With maintenance and TLC it would be ideal for someone looking to run their own contracting or transporting business on 3.4398 Hectares filled with numerous out buildings, large two story family home, separate 2 bedroom unit and a large office block including its own boardroom.



Karen Stent  
0274796368

Mike Pero Real Estate Limited

[www.mikepero.com/MPRE25382](http://www.mikepero.com/MPRE25382)

0800 500 123

[www.mikepero.com](http://www.mikepero.com)



PRIVATE FAMILY RETREAT

4 1

Enquiries Over

274 School Road, Waimauku  
Enquiries Over \$669,000  
Viewing by appointment

Nestled within an open glade surrounded by magnificent mature native plantings. Engage, entertain, and enjoy sitting back relaxing and indulging in the comforts of this character styled, family retreat. Along with its park like setting of 4175m2, and playground that includes a flying fox over the swimming pool, creative jungle gym and sand pit, you can soak up the sun on the extensive decks and then cool off in the pool while taking in the tranquil and peaceful surroundings.



Karen Stent  
0274796368

Mike Pero Real Estate Limited

[www.mikepero.com/MPRE25063](http://www.mikepero.com/MPRE25063)

0800 500 123

[www.mikepero.com](http://www.mikepero.com)





D.I.Y MAGIC, WAIMAUKU VILLA

5 2 1

Enquiries over

31 Muriwai Road, Waimauku  
Enquiries over \$739,000 - Viewing by appointment

Outstanding opportunity with heaps of potential. This character featured home with huge fully fenced section and abundant alfresco is unique to the area. This fully fenced 2033m2 property is set in a serene garden setting in the heart of Waimauku. The outside maintenance of this character villa is in very good condition and has been well maintained along with under floor & ceiling insulation, double garage and two 5000 Litre water tanks. Grab this opportunity with both hands and breathe the life back into this grand old lady, you won't be disappointed.



Karen Stent  
0274796368

Mike Pero Real Estate Limited

[www.mikepero.com](http://www.mikepero.com)

0800 500 123

[www.mikepero.com](http://www.mikepero.com)

“Sell with us & we could save you thousands”



Our fees are 2.95% up to \$390,000 thereafter 1.95% + admin fee + gst. Most other brands charge up to and around 4%\*.

Mike Pero Real Estate Ltd. Licensed REAA (2008)

Mike Pero Real Estate Kumeu  
0800 500 123  
kumeu@mikepero.com



GRAND PROPORTIONS

7 2

Enquiries Over

913 Peak Road, Helensville

Enquiries Over \$899,000

Viewing by appointment

Up the tree lined drive this grand villa looks out over rolling countryside and distant hills. The exceptionally generous 310m2 home, 7 bedroom (1 huge master with ensuite), has a modern kitchen. 2 car garaging, plus plenty of parking gives room for all your family and guests cars. Discover this comfortable home positioned on one of Peaks Road most desirable locations. With easy indoor and outdoor flow to the sun soaked pool and decked area the summer BBQs will be fantastic. Delight in the joy of space, peace and privacy.



Warren Marshall  
0212224255

Mike Pero Real Estate Limited

[www.mikepero.com/MPRE25001](http://www.mikepero.com/MPRE25001)

0800 500 123

[www.mikepero.com](http://www.mikepero.com)



10 MINS FROM WAIMAUKU AND HELENSVILLE

3 2 2

Enquiries Over

1535 State High Way 16, Waimauku

Enquiries Over \$945,000 - Viewing by appointment

Set 10min from Waimauku this fantastic rural property is ready for its next family. Recently renovated with cottage kitchen and open plan living the home has a covered central entertaining courtyard offering the perfect alfresco living environment. Good sized rooms and amenities all on one level with access to the gardens. This home has a private location and is north facing, with wide expansive rural views, beautiful maintained gardens, an orchard, plenty of land for livestock or ponies and a spring fed pond. Large shedding and implement bays with its own driveway for tractors, trucks, boats, quads and still have room for the kayaks and bikes.



Warren Marshall  
0212224255

Mike Pero Real Estate Limited

[www.mikepero.com/MPRE25345](http://www.mikepero.com/MPRE25345)

0800 500 123

[www.mikepero.com](http://www.mikepero.com)





FAMILY SAFE, QUIET & TRANQUIL WITH BRICK IN KUMEU

5 4 2

Enquiries Over

1401 Coatesville-Riverhead Highway, Kumeu  
Enquiries Over \$1,050,000 - Viewing by appointment

A rare find in Kumeu offering just over 1 acre of land in a quiet glade, offering privacy and tranquility yet minutes from the north western motorway and service/ hospitality venues. Beautifully crafted with elegant cathedral ceilings this north facing home with extensive alfresco onto patios and decking offers entertaining and freedom for the family in a way that will deliver comfort and harmony. A well designed mix of bedrooms, study, multiple living rooms, skylights and extensive garaging. Plenty of options here for you and the family.  
Contact Graham McIntyre 0276320421



Graham McIntyre  
0276320421

Mike Pero Real Estate Limited

[www.mikepero.com/MPRE25115](http://www.mikepero.com/MPRE25115)

0800 500 123

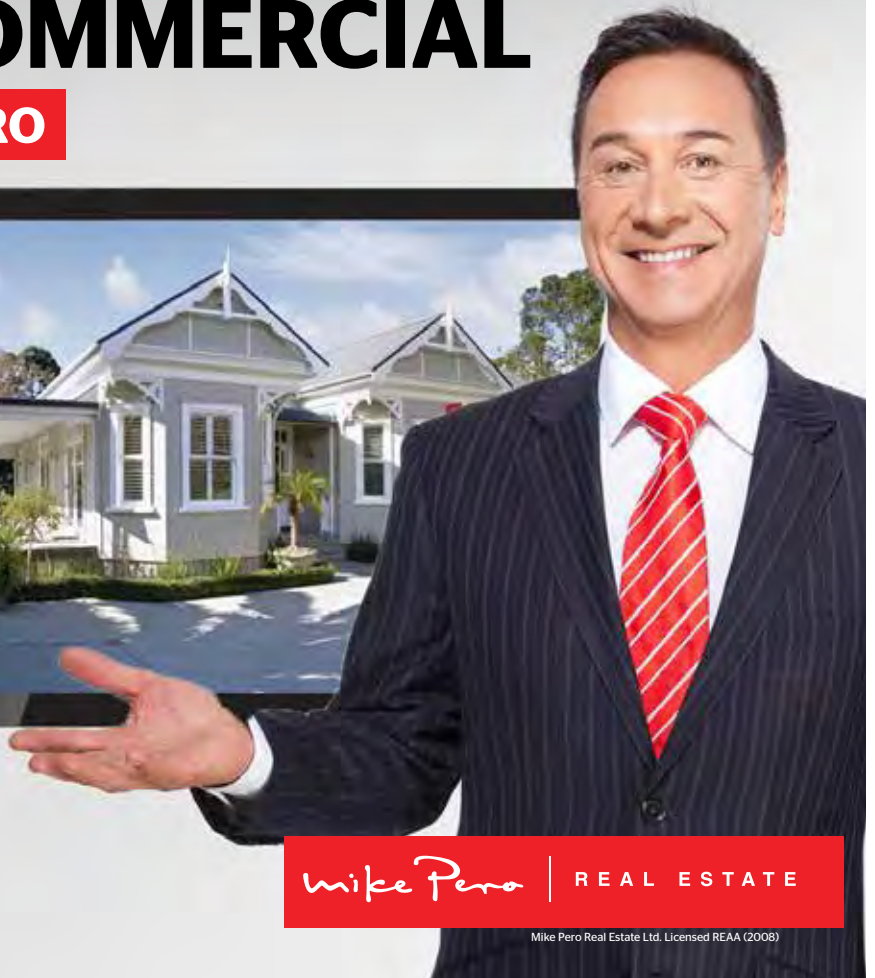
[www.mikepero.com](http://www.mikepero.com)

# A FREE TV COMMERCIAL

EXCLUSIVE TO MIKE PERO

Reach Over  
40,000  
Viewers

List with us & see your home **featured** on either TV One Breakfast or TV3 The Paul Henry Show.\*\* This has a market value of more than \$6,000.\*



\*A 15 second TV commercial produced by a professional 'agency' elsewhere and played on TV One or TV3 could cost you in excess of \$6000+gst. For a limited time only. Conditions apply.  
\*\*Subject to availability in certain areas.

Mike Pero Real Estate Kumeu  
0800 500 123  
kumeu@mikepero.com





COUNTRYSIDE KUMEU - CLOSER THAN COATESVILLE

5 3 3

Enquiries Over

181 Access Road, Kumeu  
Enquiries Over \$1,195,000 - Viewing by appointment

Situated minutes from Kumeu CBD, this near new build is well appointed and well positioned for sunshine and family time. North facing this brick and tile home with its five bedrooms and three bathrooms caters for a big or an extended family. Well designed, with separate lounge and entertaining areas the home provide excellent scope for living and entertaining. Over one hectare of land and the benefits of a new 54 sqm barn and separate fenced paddock for grazing or planting it really defines the property as a "good life" option for an astute purchaser.



Graham McIntyre  
0276320421

Mike Pero Real Estate Limited

[www.mikepero.com/MPRE25304](http://www.mikepero.com/MPRE25304)

0800 500 123

[www.mikepero.com](http://www.mikepero.com)



33 HECTARES IN TAUPAKI, CLOSE TO KUMEU

4 2 2

Buyers Over

14 Wairere Road, Waitakere  
Buyers over \$1,500,000 - Viewing by appointment

Within ten minutes drive, west of Kumeu, this 33 hectare property set in an elevated private valley offers privacy and tranquility. The land gently folds around a beautifully presented north facing brick and tile home offering four bedrooms, two bathrooms, double garage and open plan entertainers kitchen, dining and lounge. Delightful, easy, single level layout enjoying plentiful convenience shopping and local school. We encourage buyers over \$1,500,000 to view. Contact Graham McIntyre 0276320421



Graham McIntyre  
Mike Pero Real Estate Limited

[www.mikepero.com](http://www.mikepero.com)

0800 500 123

[www.mikepero.com](http://www.mikepero.com)





TO KUMEU OR COATESVILLE LIFESTYLE IS CLOSE

3 2 1

Enquiries over

**355 Waitakere Road, Taupaki**  
 Enquiries over \$1,150,000 - Viewing by appointment

A delightfully refreshing bungalow of excellent character, north facing with extensive alfresco living, in an open plan three bedroom home. Excellent storage options and growing options with a 1200 square metre Growing house. The land is over 4 hectares of prime land suitable for grazing or growing. We invite buyer enquiry over \$1,150,000 for this outstanding lifestyle block. Contact Graham McIntyre 0276320421



Graham McIntyre  
 Mike Pero Real Estate Limited

[www.mikepero.com/MPRE24652](http://www.mikepero.com/MPRE24652)

0800 500 123

[www.mikepero.com](http://www.mikepero.com)



LUXURY COUNTRY LIFESTYLE - WAIMAUKU

5 3 3

Enquiries Over \$1,400,000

**101 Taylor Road, Waimauku**  
 Enquiries Over \$1,400,000 - Viewing by appointment

Tucked away in the sheltered Waikoukou Valley of Waimauku, is this delightful architecturally designed French Provincial home. Drive through the rock wall entrance with 24 hour security in operation and meander down the private driveway of Wharauora Estate, winding through your own native bush to where you will be greeted by the magic and tranquility of a beautiful county lifestyle. Positioned for all day sun and views of the valley. If you are thinking about a luxury country lifestyle within a safe and secure environment, literally minutes from convenience shopping, good broadband links for study or home-office options, this is one home not to be missed.



Graham McIntyre  
 027 632 0421  
 graham.mcintyre@mikepero.com  
 Mike Pero Real Estate Limited

[www.mikepero.com/MPRE24390](http://www.mikepero.com/MPRE24390)

0800 500 123

[www.mikepero.com](http://www.mikepero.com)

# REGULAR AREA COLUMNISTS

## WAIMAUKU VILLAGE

The Waimauku village has been open since 2008 and Mix n Match has been there since day one. It has been a wonderful adventure for Andrew and I to open our new business in the new shopping village. We had a great time here and met many lovely people. We had our beautiful boy Joshua the following year and he is starting school this March. I have had good support and it has been great to work locally and know people here, but this is time for me to start a new chapter. I have worked hard at this business and learned a lot, but I don't have much time for other things. My lease is finishing this March and I decided to have a break from Mix n Match. I am sad to leave this behind, but I am very excited to have a new beginning. Our last day will be in March. We are clearing stock in a 30% - 40% sale. If you have an interest in any shop fittings or furniture, please make us an offer. I would like to say thank you to everyone who supported us during this time and for your kindness. Without your support, the shop wouldn't have come

this far. Have a great year. Soohee and Andrew from Mix n Match. Unit 14, 5-19 Factory roads, Waimauku. 09 411-9586

## ROLL ON 2014 AT JOJO'S

We are enjoying getting 2014 sorted at Jojo's. Although for many people it is very busy with school starting and businesses at full steam ahead. We have all our extra's happening throughout the Centre. Our swimming lessons trial is going really well and so this will continue this year, wriggle and rhyme in house with Tina from the library is a monthly favourite and we enjoyed spending time with the Kumeu Vol-



unteer Fire Brigade when they visited. Every child got to meet the crew, climb in the fire truck, spray the hose and get a sticker as well as the older 2 classrooms having a "Get Out, Stay Out" fire safety mat time with the fire fighters. We are enjoying meeting many new families with recent enrolments and are now taking enrolments for 2014. So come in and see the team if you have any questions or would like to check us out. Call (09) 412 5325, [www.jojoschildcare.co.nz](http://www.jojoschildcare.co.nz).

## RAILWAY CROSSING COST LIVES

KiwiRail and police have asked for vigilance around level crossings this summer after three recent crashes on non-barrier arm crossings from Taupaki to Waimauku. The third crash between train and car in about three months in the district claimed the life of Ronald Charles Murphy of Coatesville. The 73-year-old was killed when the 4x4 he was driving collided with a freight train at the Joyce Adams, Waimauku level crossing on December 12. Police are investigating the crash in conjunction with KiwiRail. Police urge drivers to treat the signs like any normal road intersection, stop, look and then go if the way is clear. Safety messages about level crossings may seem obvious but every year motorists or their passengers are killed or injured driving through them.

## LIFESTYLE DRAINAGE

Registered Drain Layers

Rob Owen M: 021 413 199  
P: 09 411 9224  
E: [lifestyledrainage@xtra.co.nz](mailto:lifestyledrainage@xtra.co.nz)

- New wastewater systems
- Sewer/stormwater drainage
- Truck & digger hire
- Ecoflow grinder pump installation for the PWC system
- Commercial drainage systems
- Water tank supply and install
- Drainage on lifestyle blocks
- Biolytix Wastewater Systems

love your dog. 

DOG WASH & GROOMING

Open 7 days

09 412 9026

Unit B5 190 Main Rd Kumeu - behind VTNZ & Subway





CLOSER THAN KUMEU, MORE REALISTIC THAN RIVERHEAD

3 2 2

Enquiries Over

5 Burnham Road, Waitakere  
Enquiries Over \$509,000 - Viewing by appointment

Well presented, North West facing bungalow, with polished wooden floor and extensive north and westerly decking offering elevated views over grasslands and rural views. If you are seeking the benefits of a well presented home with double garage internal access and multiple sleepout/ studios this home will deliver significant value. Within a quiet cul-de-sac, literally minutes to transport, schooling and convenience shopping with buyer enquiry over \$509,000 this opportunity will be hard to resist. First viewing 1pm on 2 February 2014.



Graham McIntyre  
0276320421

Mike Pero Real Estate Limited

[www.mikepero.com/MPRE24218](http://www.mikepero.com/MPRE24218)

0800 500 123

[www.mikepero.com](http://www.mikepero.com)



AS CLOSE TO AKL CBD AS KUMEU OR COATESVILLE

5 2 3

Enquiries Over

171 Stoney Creek Drive, Taupaki  
Enquiries Over \$949,000 - Viewing by appointment

Views are plentiful plus the attraction of privacy and tranquility and yet as close to the Auckland City hustle and bustle as you need to be. This large five bedroom homestead delivers easy living while the ducks, hens and sheep also have the best of creature comforts. The home has extensive 270 degree views while its north facing position attracts great sunshine and delivers easy alfresco living to surround decking.



Graham McIntyre  
0276320421

Mike Pero Real Estate Limited

[www.mikepero.com/MPRE25456](http://www.mikepero.com/MPRE25456)

0800 500 123

[www.mikepero.com](http://www.mikepero.com)

www.gymstick.co.nz

# GYMSTICK™

Home & Commercial Fitness Equipment

Showroom|Store: 2/156A Main Rd, Kumeu

Phone: 0800 496785

## Kumeu Chiropractic

adjust + adapt + thrive

Dr. Chris McMaster + Dr. Nolene McMaster

### 412 5536

www.kumeuchiropractic.co.nz

8 Shamrock Drive, Kumeu

Sarah Beazley, BSc MAud  
Audiologist MNZAS

55 Waimauku Station Road  
Waimauku  
P. 09 835 3332 (bookings essential)  
E. s.beazley@bloomhearing.co.nz

# bloom™

hearing specialists

Hearing Tests

Hearing Aids

Hearing Advice



**build7**  
inspirational homes

Steve Karpik

m 0276 07 07 07 f 09 236 3371  
p 09 236 3370 e skarpik@build7.co.nz

PO Box 84-373, Westgate, Auckland 0657



**Gillian Wiltshire D.O.**

Registered Osteopath  
ACC Accredited

36 Sunny Crescent  
Kumeu  
Auckland 0810  
Ph/Fax (09) 412 5977  
0212330413  
gill.wiltshire@gmail.com

## OPEN LETTER FROM BID SH16

Dear Business and Commercial Property Owners, We all know the fantastic potential of our unique business district. You now have the chance to help shape a bright economic future for our region. Please join us to learn more about the proposed North West Business Improvement District at:

Venue: Provenance Matua Valley, 791 State Highway 16 Waimauku (the recently rebranded Bees Online).

Date: Tuesday February 4th from 6.30pm.

A cash bar will be available and canapés served, so please RSVP for catering purposes, by return e mail or by calling 021909415.

There will be a guest speaker and presentation of the Association's intended business plan, with plenty of opportunity to ask questions. All business and commercial property owners from Kaukapakapa, Helensville, Parakai, Waimauku, Huapai, Kumeu and Riverhead are welcome to attend, but if you can't attend that meeting and have questions you would like answered, please take advantage of the following drop-in sessions:

Parakai Springs private area Thursday 13th February 5pm-7pm

Full Moon Café, Waimauku Thursday 20th February, 5pm-7pm

Helensville Pioneer Museum Tuesday 25th February, 5pm-7pm

You can also learn more and hear what your fellow business owners have to say, by visiting [www.northwestbusiness.co.nz](http://www.northwestbusiness.co.nz)

Please take these opportunities to understand the BID project leading up to the March ballot. You will receive a ballot pack before March 10th and by voting, you will influence the economic development of our business district.

Robynne Pringle Campaign Manager

North West District BID Project



**JC**

**JACOB CURRAN**  
Director

**JC PLUMBING LIMITED**  
P.O. Box 101, Kumeu, Auckland 0810  
P: 027 470 8769  
E: [jake.curran@hotmail.com](mailto:jake.curran@hotmail.com)



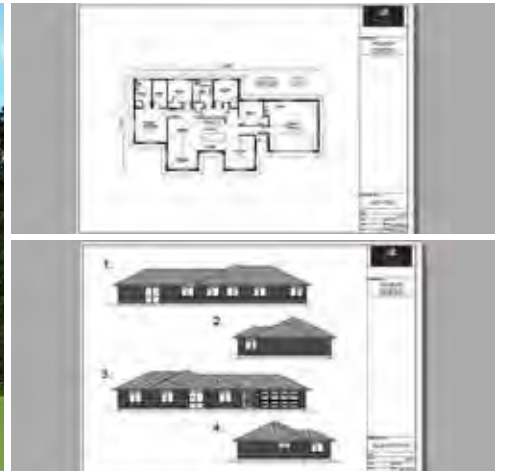
**fools pools**  
at MURIWAI

## Learn to swim at Muriwai

**Come and join the Learn to Swim Program or Swimming Squads.**

"Fools Pools" Swim School,  
376 Oaia Rd, Muriwai Beach, Rodney.  
[info@fools.co.nz](mailto:info@fools.co.nz) Ph: 09 411 9342  
[www.fools.co.nz](http://www.fools.co.nz)





FLAT ELEVATED 2000SQM SITE IN RIVERHEAD - MINUTES TO WESTGATE

4 2 2

Enquiries over

1027 Coatesville-Riverhead Highway, Riverhead  
Enquiries over \$750,000 - Viewing by appointment

Wanting a bigger residential site in Riverhead? This property is an elevated rear site of almost 2000 square meters, offering a fully useable section with mature plantings, partial fencing and services at the roadside. This is a golden opportunity to build your dream home or consider the plans that have been put forward by Golden Homes for a 4 bedroom, 2 bathroom, 2 living areas and double garage home. This established site is available with a freehold title which should be available within the next 120 days. Minutes to Riverhead School, Kumeu and Westgate shopping areas. We encourage buyers considering an investment over \$750,000 to take an interest in this house and land package. Contact Graham McIntyre 0276320421



Graham McIntyre  
Mike Pero Real Estate Limited

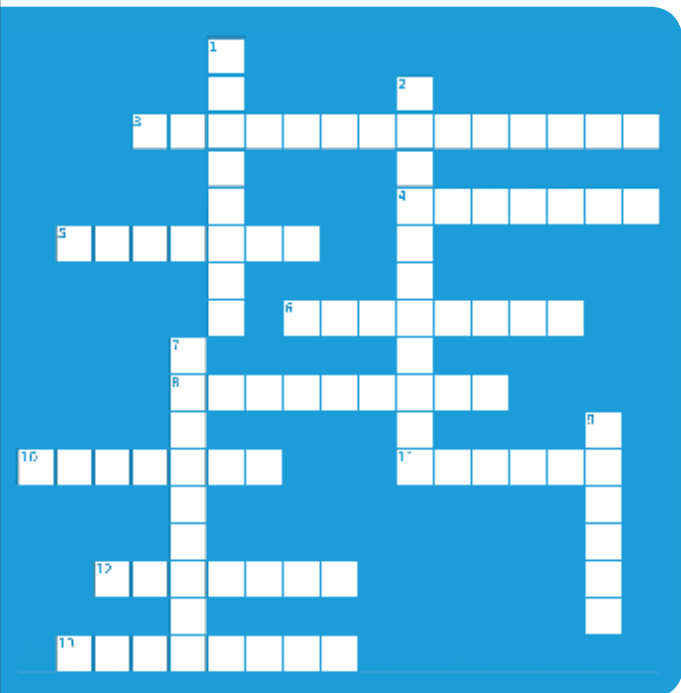
[www.mikepero.com/MPRE24242](http://www.mikepero.com/MPRE24242)

0800 500 123

[www.mikepero.com](http://www.mikepero.com)

# We Make Websites Work

Try our Wonky Crossword



## Across

- 3 Google product used for checking Search Engine data
- 4 Google's online advertising program
- 5 Free listings on Google are called the what results
- 6 New Zealand's largest social network
- 8 Data collection technology
- 10 Another type of network Google uses for its ads
- 11 What search engine is used by over 90% of Kiwi's
- 12 Social networking company that recently went public
- 13 What you use when advertising online

## Down

- 1 A data driven company with a focus on results
- 2 Ads that follow your website visitors around
- 7 The email marketing software that is fronted by a monkey
- 9 One type of network Google uses for its ads

Contact our team on 0800 932 9665 or visit [www.webwonks.co.nz](http://www.webwonks.co.nz)

10% off  
all products  
for Kumeu  
Courier readers

## THE WEB UNSPUN - SEO TRENDS FOR 2014



Welcome to a new year, and in the Search Engine Optimisation (SEO) world we are heading in to a year of change. Over the last year, Google set about to tip the SEO world on its head by altering the search engine algorithm in October changing a number of things that works towards removing spammers and validating unique and authentic content on websites. will write more about the algorithm change in coming months but let's look at what you should focus on for 2014, mainly putting together a content strategy and improving your social signal.

Google is focussing more and more on the value of the content on a website and penalising duplicate content and content that is not authentic. Your content should be unique, have regular updates and shared across a number of social media platforms, which is where the social signal comes in. It is no longer enough to just have a website by itself, you need the social platforms and networks interacting with your website and your position in the Google search engine is made up of trust and your presence across all of the web networks. Happy New Year to you all and more articles to come in the near future.

David Partis [www.designhand.co.nz](http://www.designhand.co.nz)

**KUMEU PHYSIOTHERAPY**  
Sports Injuries - Spinal Manipulations - Acupuncture

**"YOUR premier physical performance partner"**

Sports Injuries - Spinal Manipulation - Acupuncture  
325 State Highway 16, Huapai. Open Mon to Sat. Ph 417 9063

**McIsaacs** Chartered Accountants  
ACCOUNTANTS WITH INSIGHT **FREE** Initial Consultation

A: Unit A, 12 Saturn Place  
North Harbour 0632  
E: [roger@mcisaacs.co.nz](mailto:roger@mcisaacs.co.nz)

Roger Hadfield CA(CA)  
Chartered Accountant - Director

**P: 414 4050 M: 0274 869 755**  
[www.mcisaacs.co.nz](http://www.mcisaacs.co.nz)

*If you would like a no-obligation, free appraisal please give me a call, I am committed to making 2014 a great year.*

Natalie Trubuhovich  
Licensed Salesperson REAA 2008  
**Mob** 021 646 3446 | **A/H** 09 810 7171  
**E** [natalie@firstnationalwest.co.nz](mailto:natalie@firstnationalwest.co.nz)  
**Office Phone** 09 832 0082  
Waitakere Real Estate Limited Licensed Agent REAA 2008

**Plumbing Laser Whenuapai**

Your **LOCAL** for all:

- Roofing
- Plumbing
- Drainage
- Drain Unblocking
- Gas & Pumps

**45 Brigham Creek Rd WHENUAPAI**

**CALL US NOW**  
**09 417 0110**

**"Totally Dependable"**  
[www.laserwhenuapai.co.nz](http://www.laserwhenuapai.co.nz)

**KCB LIMITED**

PROJECT MANAGEMENT DESIGN BUILD RENOVATE

[www.kcbltd.co.nz](http://www.kcbltd.co.nz)  
Mob: 021 968 963  
Email: [chris@kcbltd.co.nz](mailto:chris@kcbltd.co.nz)

**Antz SiteWorks**

- Retaining Walls
- Pod Floors
- Landscaping
- Driveways, Shaping & Metalling
- Foundation through to finish Concrete
- Offal holes, Horse burial

**Tony Peat - Mob: 0272 460 480 Home: (09) 411 8692**



## THE GULL EFFECT HITS KUMEU

A new era of competition in petrol prices will hit Kumeu when independent family owned fuel retailer Gull New Zealand opens its new unmanned, drive thru site on State Highway 16. Located at 63 Main Road, Gull Kumeu is the 55th outlet for the business and will undoubtedly lower the cost of petrol in the area, says Dave Bodger, Gull New Zealand General Manager. "We know from experience that when we expand to a new area and bring our low cost model to the local market that competitors' prices mysteriously fall. It's been well documented in places like Pukekohe, Papamoa and Gisborne where collectively motorists have saved hundreds of thousands of dollars annually once Gull hits town. "Gull will be continuing its proud tradition of providing value to Kiwi drivers. Our unmanned site will be delivering sharp petrol prices from the moment it opens, with four pumps selling all grades of fuel and equipped with high flow diesel dispensers, perfect for commercial vehicles. "Cheaper fuel prices. What could be better in the lead up to Christmas and the holiday break?" Gull Kumeu is an unmanned site, accepting payment via EFTPOS or PIN operated credit or debit card. For further information please phone: Dave Bodger, Gull New Zealand, 021 278 7737

## INNOVATIVE CALLUS REMOVAL FOOT TREATMENT

A unique, innovative and intensive treatment. Safe and hygienic without the use of harsh metal implements. Rich moisturising formula penetrates deep into tough, dry, hardened skin, nourishing and smoothing without irritation. Breaks down calluses in just 20 minutes. Can be done as a single treatment, but works best as part of a pedicure. Now available at The Polish Room, for all of your nail requirements. 206 Waitakere Rd, Ph 0274072264.



## SENIOR PET CHECKLIST

Does your pet:

- Spend more time sleeping?
- Have trouble jumping or climbing stairs?
- Seem reluctant to go for a walk?
- Struggle with exercise?

These could be signs of conditions such as Arthritis, Kidney Disease and/or Heart Disease.

Early detection is key. Book your senior mate in for our:

Senior Pet Check up  
**\$45.00**  
 Usually \$58



For the first 15 appointments booked, we'll throw in a senior urine test and a Frontline flea treatment!

Our vets will give your pet a full physical exam and discuss any concerns you have.

Available until 25 August. Bookings Essential.

206 Waitakere Road, Auckland  
 Ph: 09 412 5516  
 www.kumeuvets.co.nz

### NAYLZ & BEAUTI

Roxanna (Roxy)  
 412-2233 or 0299 890 999

Fully Qualified -  
 Beauty Therapist, Makeup Artist,  
 Nail Technician

5 Awa Road  
 R.D.1  
 Kumeu 0891

**FreshChoice Waimauku**  
 A-2 Waimauku Retail Centre  
 5-19 Factory Road  
 Waimauku, Auckland  
 Phone: (09) 411 7890/411 9495  
 Fax: (09) 411 8050  
 Mobile: 021 048 3355  
 Email: waimauku.fc@xtra.co.nz

**HITEN DESAI**  
 Store Manager

### Ambience

Home & Gifts

Victoria Anderson

p: 412 2466  
 m: 0274 510 566  
 w: www.ambiencehomeandgifts.co.nz  
 e: sales@ambiencehomeandgifts.co.nz  
 Unit 2, 325 Main Rd, Huapai

### DIGGER & TRACTOR HIRE

PH KEV 0274-204 746

EXCAVATIONS  
 DRILLING  
 TRENCHES  
 LANDSCAPING AND SHAPING  
 Paddock TOPPING

4 tonne Digger \$70 per hour. Plus transport to site.

### The Polish Room

Acrylic, Gel & Natural Nail Services

Larissa Ph: 027 407 2264  
 206 Waitakere Road, Tamapaki, Auckland



# Danswan Law

**Specialist legal advice in:**

- Construction Law
- Contractual Disputes
- Insurance
- Leaky Buildings
- Civil / Commercial Litigation and Mediation
- Debt Recovery / Liquidation / Bankruptcy

Danswan Law Limited  
 Email: chad@danswan.co.nz  
 Telephone: (09) 412 7348 / (021) 167 6622



## Spa Di Vine

**A Country Escape**

12 Taylor Road, Waimauku, Auckland  
 Phone 09-411 5290 relax@spadivine.co.nz  
 WWW.SPADIVINE.CO.NZ  
 Gift Vouchers for a great Experience Gift



## JET HOME

### Sewage Treatment Plant

Sewage Treatment Systems  
 Concrete or Fibreglass Tanks  
 Full Installation & Servicing  
 Council Approved  
 Drainlaying & Excavation  
 Water Tanks, Pumps, Filters

Ph 09 415 1538 email info@jetwaste.co.nz



HEAT PUMPS & AIR CONDITIONING  
 DUCTED & HOME VENTILATION SYSTEMS  
 SERVICING & REPAIR  
 FREE ASSESSMENT & NO OBLIGATION QUOTE

---

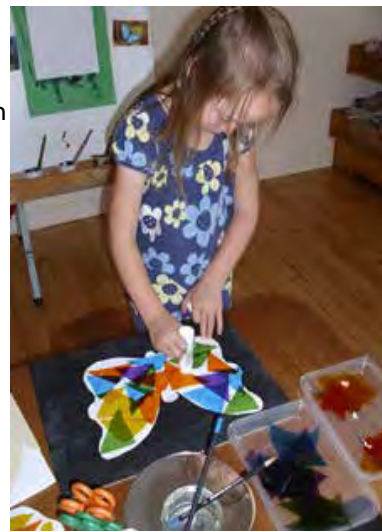
BRENDAN CLARKSON, MANAGING DIRECTOR

---

Office 09 912 0553, 1296 Coastesville-Riverhead Highway, Kumeu, admin@clarksonaircon.co.nz, www.clarksonaircon.co.nz

## EXPLORING COMES NATURALLY

The children at Nature's Explorers kindergarten continue to have a great interest in their exciting world of bugs and insects. Following on with this interest this week the children have been fascinated exploring a swan plant one of our parents kindly brought in for the children recently. The children were quick to source magnifying glasses to observe the tiny caterpillars and chrysalis on the leaves, with guidance from their teacher. Early literacy and mathematical skills are promoted as the children had the opportunity to count the amount of chrysalis on the swan plant and discuss their findings together. Ava excitedly advised her friend Molly, "there are two chrysalis and two caterpillars on the plant." Leading on from this interest the children have been participating in a variety of butterfly arts and crafts, including making collage butterfly's. We currently have limited spaces at Nature's Explorers kindergarten. If you are interested in learning more about our kindy please contact us at 1 Maud Street, Riverhead, phone: 412-8800 or online <http://www.naturesexplorers.co.nz/>



## MUSIC AT MATUA FEBRUARY 8, 2014

Matua Wines, Kiwi FM & Phoenix Drinks are proud to announce that Music at Matua will return this summer on Saturday 8th February, 2014 with a leading lineup. A reflection of Matua Wines' iconic trailblazing spirit and rich Kiwi heritage; the concert blends a critically acclaimed line-up of bands, with the best wine New Zealand has to offer. Music at Matua will see a highly anticipated appearance by headliners, Trinity Roots who bring with them unreleased material from their forthcoming album to perform at their only Auckland Summer 2014 show and will also include a set from this year's Taite Music Prize winner, SJD (full band performance); while up-and-coming folk-pop duo, Joseph & Maia will be warming up the stage. Capping off the lineup will be former Kora frontman, Laughton Kora who will deliver a not-to-be-missed solo performance. Set in the picturesque surrounds of the Matua Vineyard. A boil-up of ingredients that



**Phone: (09) 412 9908**  
**Mobile: 021 760 681**

**COTTLE MOTORS & AUTO ELECTRIX**
**PO Box 117, Kumeu**

**MUFFLER & EXHAUST SERVICE**

**65 MAIN RD KUMEU**

**WOF REPAIRS**

**THE BATTERY SHOP**



## LICENSED RECLADS

*The Weathertight Professionals*

We are well experienced licensed builders specialising in recladding in the Auckland area. If you require high quality workmanship at very competitive rates please get in contact.

**021 023 51471 or 021 556 598**  
[www.licensedreclads.co.nz](http://www.licensedreclads.co.nz)





seems to embody the very essence of our home, land and sea, the legendary trio, TrinityRoots is one of New Zealand's most iconic roots acts. Reforming in 2010, the genre-bending group returned to the stage and once again captured audiences with their big-hearted, hypnotic live show. Recently, the band's lineup was reinvigorated as Warren Maxwell and Rio Hunuki-Hemopo welcomed new cornerstone drummer/vocalist Ben Lemi. Revitalised, the band have just penned new material and are set to record their long-awaited third album, due for release in mid-2014.

**EVENT INFO:** Following last year's hugely successful effort, Sustainable Coastlines will be kicking off the day and running a clean-up of Muriwai Beach on the morning of the event. Cleanup info will be released closer to the event at [sustainablecoastlines.org](http://sustainablecoastlines.org). Free parking will be available at Matua on the day. A range of vendors will be selling food on the day however; attendees are welcome to bring a picnic. Please note liquids are prohibited from being brought into the venue. A selection of drinks will be available for purchase on the day. To celebrate the concert, a free music download featuring songs from the Music at Matua artists will be available from SoundCloud. Tickets \$45 Saturday 8th February, 2014 Matua Wines, 307 Waikoukou Valley Rd, Waimauku, Auckland Gates open 1pm. Live acts from 2pm - 6pm. For event and bus tickets and more information, head to [Ticketek.co.nz](http://Ticketek.co.nz)

## P LABS WHEN BUYING A HOUSE

It is always open for a sale and purchase agreement to include a test for P Lab contamination (or asbestos as the case may be). This is especially so if you have any concern about how the property has been used by the previous tenant. Obviously a P lab is something which is done in secret. Frequently, the vendor will not know about the problem. It is only after purchasing the property that the neighbours tell you of police activity at the property. However, decontamination is expensive and may range from \$5,000 up to the cost of a complete rebuild of part of the house. Also, you cannot live on the property or rent it out until the decontamination is complete. Talk to your lawyer about this if you have any concerns.

Luke Kemp 25 Orahua Road Kumeu, Auckland P O Box 600 Kumeu Auckland 0841

Telephone 09 412 6000 Facsimile 09412 6016 Email [luke@kempsolicitors.co.nz](mailto:luke@kempsolicitors.co.nz)



**Work out in a fun, friendly environment**

- Highly qualified instructors
- Child minding • Sunbed • Massage
- Fitness classes • Personal training

**JOIN NOW!**

**PHONE 412 8932**

Computer slowing down...  
There are options to make this faster for you.

Visit your local friendly computer professionals for more information



322 Main Road  
Huapai  
(Next to Ray White)  
09 412 9227  
[www.itiq.co.nz](http://www.itiq.co.nz)

*We know your IT matters Every aspect*

Come see us **Charcoal Chicken & Burger** Instore specials



45 Main Road, Kumeu Phone: 412-5406  
Open Tue-Sun from 11am till Late  
Phone orders are welcome



We have a specialist property team ready to assist you with the sale and/or purchase of your property. Whether it's your family home or an investment property we can help. We can also help with setting up a trust or reviewing your wills. Contact us today for fast, friendly and professional service.

293 Lincoln Road  
PO Box 104-065, Lincoln North  
Waitakere 0614  
Telephone 09 836 0939  
Fax: 09 837 2500  
Email: [partners@smithpartners.co.nz](mailto:partners@smithpartners.co.nz)  
Website: [www.smithpartners.co.nz](http://www.smithpartners.co.nz)



84 Main Road, Kumeu  
Just above Professionals Real Estate  
Ph 412 2139 [anne@twkumeu.co.nz](mailto:anne@twkumeu.co.nz)

Please contact me to ensure I am available at a time to suit you. Anne Allen - 26 years in travel.



Every Day In store Specials  
Great Selection of Wines, Spirits, Ciders, Beers & RTD's  
We Cater for Small & Large Orders  
Supply Keg Beer On Order  
Gift Vouchers Available

**New Zealand's Favourite Liquor**

Thirsty Liquor Huapai  
301 Main Road, Huapai  
Ph/Fax: (09)412 9614  
[www.thirstyliquor.co.nz](http://www.thirstyliquor.co.nz)





**Resource Planning Applications** • 198 Orahua Road, Kumeu  
**Project Management** • PO Box 81-075, Auckland 0662  
**Environmental Impact Reports** • Phone: 09 412 2016  
**Subdivision & Engineering Design** • Fax: 09 412 2013  
**Advocacy & Mediation Planning** • Mob: 021 637 772  
**Email:** [petesinton@townplanner.co.nz](mailto:petesinton@townplanner.co.nz)

## The Picture Framing Company LTD.

*We will frame anything!*



- ✓ Competitive prices
- ✓ Professional Framers
- ✓ Knowledgeable Team
- ✓ Friendly Service
- ✓ Integrity
- ✓ Quality

Established in Kumeu for 20 years

Ph 412-6224 · [www.pictureframing.co.nz](http://www.pictureframing.co.nz) · 14A Shamrock Drive, Kumeu

**DAVID LLOYD MORTGAGES**

David Lloyd  
Director

David Lloyd Mortgages Ltd  
Tel: 09 411 9251  
Mob: 027 411 9255  
Email: [david@davidlloydmortgages.co.nz](mailto:david@davidlloydmortgages.co.nz)

[www.davidlloydmortgages.co.nz](http://www.davidlloydmortgages.co.nz)

## SEE FOR YOURSELF AT 79 ORAHA ROAD, KUMEU



Today's preschool learning at its best, come and see for yourself at 79 Orahua Rd, Kumeu. Albert Einstein believed that play was the highest form of research. Certainly it has been proven that children who are active in unstructured play, not only have more advanced social skills, but also have larger vocabularies, better problem solving skills, more independence, imagination and creativity, and are more adept at risk taking than those who are less involved in play. Play provides the foundation for learning in a child's world and opens the door to a world of learning opportunities. Nowadays children are taught using a blend of three learning styles - visual, kinaesthetic and auditory learners and classrooms are far more dynamic places than they were in the past. At Country Bears we have created a place where children have the opportunity to explore their own learning adventures with the support of experienced qualified teachers that truly believe that children grow through being involved in hands-on tasks. At Country Bears children progress through age group classrooms, starting from our Baby Bears Centre with its home-away-from-home feel and a gentle nurturing team of teachers, to the Bear Cubs group which embraces the growing curiosities and ability to explore, then into the transition to school class where the children are engaged in more in-depth studies and projects/reading and writing. Throughout our centre we believe that children learn from teacher supported tasks/together time and activities, as well as child directed time. Our environment allows the children to take their learning beyond the indoor centre and outdoor playground facilities to our very own forest and tree

# Burnetts

## SEPTIC & WATER TANK CLEANING

**Your septic tank should be cleaned every 3 years**  
(average family of four)  
*We service all areas*

Phone: **412 9210**  
or **0274 924 494**

Gold Standard

*Innovation Built in!*

Contact Paul Houchen Ph 021 860 227

SHOWHOME 2 Triton Drive, Albany  
PH 09 478 0440

## TRENZ HOMES

innovative housing solutions

Kitsets - Full Builds - Your Plans or Ours

Ph Stu 021 456 811

PH: 0800 2 548 738

[www.trenzhomes.co.nz](http://www.trenzhomes.co.nz)



area amongst the natural environment. Our Tree-house classroom project and Elements of Life Programme has been very well received and with the introduction of free 4 hour sessions \*8.00-12.00 am and 12.30 -4.30pm (\*special conditions apply). The centre is looking forward to another amazing year. Please feel free to come and have a look at our beautifully placed centre and team of teachers. We are up the road, over the bridge on Oraha Road. Blue sign at gate/flags Phone 09 4128055 Country Bears Early Childhood Centre . 79 Oraha Road, Kumeu. [www.countrybears.co.nz](http://www.countrybears.co.nz) -[www.facebook.com/cbearsecc](http://www.facebook.com/cbearsecc)



*Spectacular Muriwai*

Overlooking the ruggedly but beautiful West Coast.

Membership · Casual Games  
Functions/Wedding Venue

Free ph 0800MURIWAI, +6494118454  
[www.muriwalgolf.co.nz](http://www.muriwalgolf.co.nz)

## The Travel Brokers

*'Your personal travel professional'*

**Tanya Franklin**  
Travel Broker

Tel DDI: 64 9 411 9105 Mobile: 021 254 9169  
Email: [tanya.franklin@thetravelbrokers.co.nz](mailto:tanya.franklin@thetravelbrokers.co.nz)  
[www.thetravelbrokers.co.nz/tanyafranklin](http://www.thetravelbrokers.co.nz/tanyafranklin)  
Waimauku, Auckland 0881, New Zealand

A member of Just Tickets Ltd. Just Tickets Ltd is a wholly owned subsidiary of Stella Travel Services, 66 Wyndham Street, Auckland




**Luke Kemp**  
LLB, BCOM, DIP.  
HORT

Kumeu, Auckland  
P O Box 600 Kumeu  
Auckland 0841

Telephone 412 6000  
Facsimile 412 6016  
Email [luke@kempsolicitors.co.nz](mailto:luke@kempsolicitors.co.nz)







**"A good beginning lasts a lifetime".**  
For an education fostering *confidence* and an *eagerness to learn* and explore, Country Bears is the place to be.

Our diverse rural property provides a wholesome environment for *creative and inspiring life lessons*, an endless route for exploration which develops a *love* for the earth, nature, and towards healthy living.



**COUNTRY BEARS**  
Early Childhood Centre  
Est. 1993  
[www.countrybears.co.nz](http://www.countrybears.co.nz)  
([www.facebook.com/cbearsecc](http://www.facebook.com/cbearsecc))  
79 Oraha Road, Kumeu.

**2013 is our 20th Anniversary!**

Our 20 years of experience provides an eye for social change and influences upon our children, which enables us to support/apply a grounding platform built around the simplicity of our core values.

To acknowledge and celebrate the support of our local community, we are offering our **20th anniversary special rates for new enrolments, for all of 2013.**

**For Further enquiry, ring Rita on 4128055**







**Calls cutting out or no reception for your mobile?**

We have solutions for your home, office, bach, mobile home, caravan, car, truck, boat or building site so you do not miss any more calls and txt messages.

**Also fast internet if required!**

**it-iQ**

322 Main Road  
Huapai  
(Next to Ray White)  
09 412 9227  
www.itiq.co.nz

*We know your IT matters  
Every aspect.*

**CASTLE PANELBEATING**

**Grant Castle**

P (09) 412 8239 | 106 Main Road, Kumeu  
M 027 299 7054 | E castlepanelbeating@orcon.net.nz





**SPARKN Electrical Solutions**

Tony Boyd  
MANAGING DIRECTOR

P 09 411 8526  
M 021 772 756 (021 SPARKN)  
E sparkn@hotmail.co.nz


www.sparkn.co.nz

**KUMEU TYRES LTD**

**Main Road, Kumeu**

- New Tyres
- Truck Retreads
- Used Tyres
- Wheel Alignments
- Great service
- Fleet Service

**Phone: Neil (09) 412 9856**



Thursday to Saturday  
Tapas from 5pm

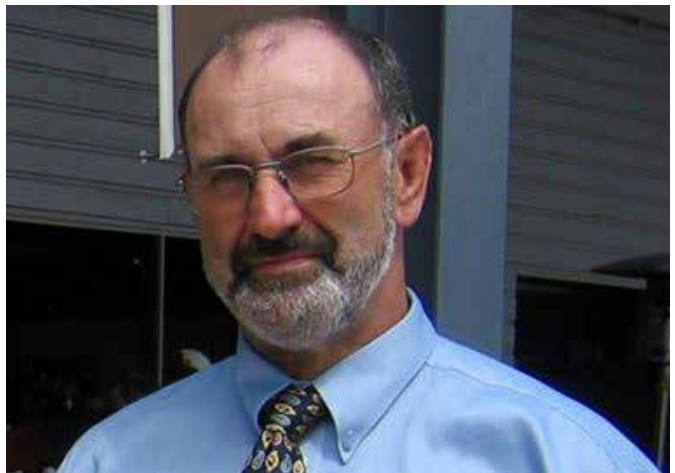
Saturday and Sunday  
Brunch and Lunch  
10am to 3pm

**TOP SHOP Café**

189 Motutara Road,  
Muriwai Beach

Ph 09 411 8086 to book a table with a view

**A TRIBUTE TO MICHAEL THOROWGOOD**



*You can shed tears that he is gone  
Or you can smile because he has lived  
You can close your eyes and pray that he will come back  
Or you can open your eyes and see all that he has left  
Your heart can be empty because you can't see him  
Or you can be full of the love that you shared  
You can turn your back on tomorrow and live yesterday  
Or you can be happy for tomorrow because of yesterday  
You can remember him and only that he is gone  
Or you can cherish his memory and let it live on  
You can cry and close your mind, be empty and turn your back  
Or you can do what he would want: smile, open your eyes, love and go on*

**EZY UP LTD Ride On Mower Lift**

**Sole New Zealand Agent**



The piece of equipment you need to clean and maintain your Ride On Mower

**PRODUCT SPECIFICATIONS:**

- Maximum wheel track 105cm
- Adjustable height 5cm - 73cm
- Maximum load bearing 550kg
- Folds flat for easy storage

**\$189 + shipping nationwide**



**www.ezyup.co.nz**  
Email: angela@ezyup.co.nz  
Phone: 021 267 0007



THOROWGOOD, Michael Born 02-08-1941. Passed away on 04-01-2014. So loved husband of Tina, died suddenly at home in Kumeu. Father to Paul and Kim, Brother to Pete, Steve and Sue, Uncle to Nathan, Chelsea, Lisa, Amy, Hannah, James, Nic, and Josh, Grandfather to Mikyla, Finn, Addison Rose, Ella and Joel. Will be so missed by all.

From Sharon - He was one of life's saints. He always had time to stop and acknowledge you and say hello normally followed with a cheeky comment. One moment that stands out for me is when my son was about 12 weeks old, both him and I had just left the doctor's in Waimauku with a tummy bug as I was putting him into his car seat the both of us started vomiting in the carpark at Waimauku lots of people saw us and ignored us. Mike was the only one to stop and ask if we were okay and could he help us.

From Vanessa - Mike always went out of his way to say hello to me, even though as a young person I made mistakes he always had a laugh and always asked me if I was "staying out of trouble love". I loved seeing his face at events, at horse of the year and around the place. I will never forget him teaching me to lead the yearlings in the race way, the horses never played up for him he was "Black and White" and if they played up for us, and we had to get Mike you could see the youngsters watch him walk down from the top going "wasn't me, I am perfectly behaved" lol. Mike's stories about teaching the police dogs and how he made them piddle on command or guard his desk and not move, you would listen to his stories for hours. He was a great man, he made me want to be a better person.

From Jenni - Mike was wonderful, such a kind man, always there to help with endless good humour and love of jokes - whenever I chatted to him I would end up laughing! I have vivid memories of his amazing sales technique when he was persuaded (year after year!) to sell raffle tickets at our dressage shows - he would promise a night with George Clooney to the winner.....it worked - he sold heaps!!

From Debbie - Our thoughts go out to all of the Thorowgood Family, such a shock and such a sad loss, we are so glad to have spent Christmas day with Mike, Tina and Kim, Mike still had that great sense of humour and had us all giggling away...big hugs...x



**designhand**  
.co.nz

taking your business to the world



Specialists in web design for small businesses

- Full design service
- Online shopping sites
- Existing website makeovers
- Hosting & domain name registration

0800 932 872 (0800 WEBTRAIN)

david@designhand.co.nz

www.designhand.co.nz

Pete Aalbers

**Pete the Builder Ltd**

**Builder's Reports**

Building Services  
Project Management



Cell 021-980012

PO Box 21610, Henderson, Auckland 0650

Email [pete@petethebuilder.co.nz](mailto:pete@petethebuilder.co.nz)

**Zash Hair**  
77 Waitakere Road  
Phone: 021 814 663



**NOR-WEST & KUMEU**  
**GLASS SERVICES**

Specialists in Windscreens & Glazing

46 Main Road  
Kumeu  
PO Box 626  
Kumeu 0841

**Darren Hakesley**



Phone: 412 9914  
420 7818  
838 1499  
Fax: 412 7875  
Mobile: 0274 965 596  
[nwkgs@xtra.co.nz](mailto:nwkgs@xtra.co.nz)

**KUMEU PARTY HIRE**

TELEPHONE  
**412 2071**

**EVENTS AND PARTY HIRE**

**KUMEU PARTY HIRE**

4b Loft Place  
Fax 09 412 9965

Ph 09 412 2071  
Mon-Fri 8.30-5pm  
Sat 8.30am-12pm  
Sun Closed

Waimauku  
**Landscape  
Supplies**

For all your landscape and Quarry materials

- Open 7 Days
- Free Loan Trailers
- We Deliver
- Bags and Bulk

**09 411 9604**

400M up State Highway 16 from School

KUMEU  
**GYM**  
AND INDOOR  
SPORTS CENTRE

**OPEN**

**Weekend!**

**Saturday 22nd and Sunday 23rd February**

**FREE**

- Indoor Netball games and Indoor Soccer games
- Fitness Classes
- Fitness Testing Body Composition and Blood Pressure Checks
- Sausage Sizzle

See our website for timetable details.

Our friendly staff will be on hand to give you a tour of our facilities and help you out with weight training if you would like to give it a go. Our bistro will also be open for food and beverages.

**WIN** a 12 month membership!

**SPOT PRIZES!**

**250C Main Rd Kumeu Ph: 412 8932**

[www.kumeugym.co.nz](http://www.kumeugym.co.nz)



Follow us on Facebook