

kumeu

Courier

FREE monthly community magazine for Kumeu & districts

EVENTS AND UPDATES
HOT ROD SHOW HEATS UP

- Safer communities
- Food & beverage
- Home & garden
- Property market report

BATTING FOR KUMEU CRICKET

Circulation is 10,000 print copies and 3371 opened and read email copies.
Editorial contributions are free from cost. Advertising starts at \$85 plus gst for a business card size.
Contact Geoff Dobson on 027 757 8251 or geoffdobson2017@gmail.com

December 2020



Greetings

I call it the 'Horror Highway' – State Highway 16 that is.

Like many of you, I've often been stuck in traffic on the main road through the Northwest.

I know all the back roads but they're becoming very busy too – and don't try turning right onto the highway either.

Now comes the news the promised state highway safety upgrade from Bringham Creek to Waimauku is delayed.

That's attributed by the NZ Transport Agency (responsible for the highway) to an appeal on a notice of requirement to the Environment Court for stage one (Waimauku to Huapai).

No doubt we'll know more next year.

People might worry the safety project will lead to works holding up traffic even further, but in my view anything to improve the highway is good.

During recent trips along it I notice the seal is breaking up on parts. I hate to think what Christmas and summer traffic will do to it!

And it was so congested on a recent weekend the traffic was barely crawling between Kumeu and the northwestern motorway roundabout link – often both ways.

One businessman along the highway reckons traffic is bad almost any day of the week at peak times, but especially from about 10.30am to 4pm during weekends.

It's a reason many give for moving away from this area.

And I cannot blame them when even the back roads become difficult to negotiate.

Some of the side roads are in such a bad state I fear punctures or worse.

And the outlook isn't good with the Auckland Council expecting a huge hole in its budget, meaning road repairs might be inadequate for some time.

A few areas have 30km/h limits for the bad bits which seem to have become almost permanent speed restrictions.

I just hope our roads don't get worse.

I did hear somebody is painting rings around the worst potholes – hope they don't run out of paint!

Meanwhile, please try to stay safe on the road and enjoy the Christmas break.

Visit www.nzta.govt.nz/projects/sh16-bringham-creek-and-waimauku/ for information on the highway.

Geoff Dobson, editor



What's inside

- 3** People & Places
- 8** North West Country
- 9** Safer Communities
- 10** Community News
- 12** Art CLub
- 14** In brief: Updates
- 16** Property News
- 18** Property Statistics
- 20** Property Market
- 24** Home & Garden
- 26** Jim's Mowing
- 28** Build New
- 30** Central's Tips
- 32** Pets
- 34** Food & Beverage
- 36** Health & Beauty
- 38** IBS
- 40** Area Columnists
- 42** Local Board Update
- 44** Craigweil House
- 46** Chris Penk

ENQUIRIES / FEEDBACK:

Geoff Dobson

P 027 757 8251

E geoffdobson2017@gmail.com

W www.kumeucourier.co.nz

COVER PHOTO: Stephen Nobilo - Kumeu Cricket

PRINT RUN: 10,000 copies, Treehouse Print

EMAIL DATABASE: Sublime NZ

DISCLAIMER: Articles published are submitted by individual entities and should not be taken as reflecting the editorial views of this magazine or the publishers of The Kumeu Courier Limited.

Articles are not to be re-published unless written consent is granted from the publisher (Graham McIntyre).

People & Places

Batting for Kumeu cricket

Stephen Nobilo has been awarded life membership of the Kumeu Cricket Club.

He joins a select few – probably about 14 still living – who have put their heart and soul into the club over many years.

The club celebrates its 80th anniversary in 2023 – formed in 1943-44 – with Stephen involved for 35 of those years and its chairman for the past 11 years.

Fittingly he featured on the Kumeu Courier cover in May 2019 when the club was celebrating its 75th anniversary, presenting a life membership award to Monte Neal at the Brian Neal Oval named in honour of Monte's dad who died the year before – also a life member.

Others to get life membership in the club's 75th season were Dean Stewart, Peter Blucher and Vaughan Wynyard.

As Stephen said at the time: "It's a pretty special honour to bestow on members in recognition of their service, time and the contribution they have made."

Now it's his turn – and it came as a "complete surprise".

Stephen took up a bat at the age of 10 when he was old enough to play but then later left the club for about 15 years to work in the wine business.



He reckons he's probably the only Nobilo family member still involved in wine making, running Muriwai's Waimarie Estate, and also involved in the Northern Winegrowers and Grapevine Improvement Association.

The former Nobilo Wines business in Huapai involved several generations of the family and is now the Country Club retirement and lifestyle village amid the "Huapai Triangle" housing development – with just Nobilo Road and the late Nikola and wife Zuva's former home among the only reminders.

But Stephen's determined to preserve not only the Nobilo history in the area but that of the area itself, a reason he's on the NorWest Heritage Society – a local group which coincidentally meets regularly at the Kumeu Cricket Club.

And when cricket players run on the pitch at the Huapai Reserve (also known as the Huapai Domain) there's another Nobilo reminder – the white picket fence which once fronted the distinctive Station Road villa known as Antrim House, where former television current affairs presenter and Fair Go founder (1977) Brian Edwards lived prior to moving to Waitakere Road in Taupaki for a time.

Stephen says he was coaxed into returning to the club after 15 years away, and he became secretary when Brian Neal was in charge of the club in the 1990s.

The 1990s were glory days for the club, a serious contender in Auckland one-day cricket, and it had a principal club ranking from Auckland Cricket allowing the club to play at premier grade level.

Those days look to be returning for the club, which is again building junior grade player numbers and has returned to a men's premier status in T20 and 50 over formats.

The two-storey clubhouse has been completed – even though it



Come and join us at Nature's Explorers Kindergarten – the best kindy ever!

Your child will thrive at Nature's Explorers. Here are a few reasons why:

- Our warm and caring nature based learning environment
- Specialist early education and low teacher/child ratio
- Gorgeous home-like environment

8 weeks half price fees
On all new enrolments

Visitors welcome at our beautiful kindergarten, visit or call us today
09 412 8800



www.naturesexplorers.co.nz

1 Maude St, Riverhead

People & Places

suffered a disastrous fire in late 2019, losing much memorabilia and gear.

The club hopes to soon add another grass wicket such as the one at the Brian Neal Oval, giving the club's second XI a home pitch.

And its game formats are being adapted to suit modern times, encouraging family involvement with Friday evening sessions (5.30pm-7pm) where youngsters can be introduced to cricket through using a softer ball than the traditional hard red cricket ball.

"They learn the basics with mums and dads, grandparents and other family members able to come along," Stephen says.

He says this frees youngsters up for other Saturday activities in the season, such as surf lifesaving.

The Kumeu Twilight Competition on Tuesday nights is also very popular with social and business team players with around 16 teams from throughout the Northwest competing.

And the club has long had a women's cricket team.

Traditionally, cricket was nearly always played on Saturdays. But Stephen says the Kumeu Cricket Club aims to innovate and provide a better product for members while encouraging people to participate, especially with housing growth in the district.

"We look to involve families and it's a great way for people new to the area to meet and interact.

"People say they're time poor, but our volunteers are encouraged to take ownership of the club and once a year we have a working bee and give the club a spring clean where people can contribute and mix."

Stephen says it's the family culture, the club's great people, the sporting benefits (health, camaraderie, support and more) which makes him want to give of his time.

"And it's not just me, but a whole group of people who support the club and make it what it is."

One of those is Ian Coleman, also awarded life membership this year in recognition for his many years of service in the 1990s when the club was arguably at its strongest.

It had six senior sides playing men's premier grade cricket and a junior club with more than 400 players.

Ian filled many roles over the years, including club captain, junior chairman and club delegate to various Auckland and North Harbour cricket association committees.

Saturdays would find Ian manning the barbecue, feeding the many juniors or doing numerous other tasks to help the club.

Hot rod show heats up

We have 20 individual day passes worth \$20 each to give away to the 27th annual Repco Classic Car and Hot Rod Festival on January 16 and 17 at the Kumeu Showgrounds.

Just email your name and other contact details to editorial@kumeucourier.co.nz in to be in the draw for one ticket per family.



Owners and organisers Ken and Desma Galvin of Kumeu have been involved with the show for all 27 years, and both have a collection of hot rods and classic cars – such as Desma's 1938 Chevrolet coupe.

Desma expects about 30,000 people will come to look at 3500 cars, 100 motorbikes, 120 trade displays, 350 swap sites, Retro-o-Rama Alley, the Jack Daniels National BBQ Championship, a pedal car contest, Miss Kumeu, Ms Timeless and Men's Beard competitors; and more.

The COVID-19 pandemic may limit international visitors in 2021, but it's likely more Kiwis will call in because of global travel restrictions.

NZ COVID Tracer QR codes will be on the gates, and Desma hopes that by show time there won't be any alert levels still in place.

A junior dragster display, Wild Bunch drag cars, fire-ups, kids' entertainment, music from three bands, food stands, a retro caravan display and car awards – including the popular People's Choice – are included in festival attractions.

Some 2000 overnight campers are expected in designated areas,

Quality Steel Sheds, Designed for You.

Lifestyle & Residential Sheds, Farm Sheds, Commercial & Industrial Buildings

- Tailored to your specific needs
- Built up to 30m wide (span) and 7m stud height
- Made with .40-gauge steel roof and cladding for lasting durability
- Designed and engineered in NZ for your environment
- Building consent process handled by our team
- Locally owned and operated in Kumeu



Kiwispans Kumeu
329 Main Road,
Huapai, Auckland 0810



0800 870 078
09 412 8455



www.kiwispans.co.nz
kumeu@kiwispans.co.nz



People & Places

organised by the New Zealand Motor Caravan Association and the NZ Motorhome Travel Group.

The Auckland Firefighter Challenge teams' event has unfortunately been cancelled for this show.

Before this festival has even started, Ken and Desma are helping organise another event at the showgrounds in April called The Very Vintage Day Out, celebrating a by-gone era.

It's the first time for the event at Kumeu after being held at the ASB Showgrounds in Greenlane for about four years.

The Very Vintage Day Out includes vintage cars, vintage clothing, steam punk, rock 'n roll, Miss Pin Up New Zealand 2021, a military display, a Very Vintage Bake-Off, a photo safari, bands, vendors, and much more.

Meanwhile, Ken and Desma are concentrating on making the Repco Classic Car and Hot Festival another success.

It's also supported by Milwaukee Tools, Battery Town and Classic Cover insurance.

The festival is open Saturday January 16 from 7am-6pm and Sunday January 17 from 8am-5pm.

Admission is \$20 adult, children under 12 free, with free parking available.

No motorcycles are allowed on the showgrounds other than for display - with all motorcycle parking at the nearby Kumeu Community Centre. Visit www.kumeuhotrod festival.co.nz for more information.

Lions bike giveaway

Do you know an eight to 10-year-old who would like a new bike?

The Waimauku Lions Club has two bikes to give away.

If you know someone who deserves one, please let the club know in 70 words (or less) why you think they should have a bike.

Include your phone number, and e-mail lionswaimauku@gmail.com or mail to Box 6, Waimauku. Entries close 5pm on Tuesday December 15.

Meanwhile, the club held a successful garage sale in November, raising \$4500 for the Auckland Rescue Helicopter Trust (Auckland Westpac Rescue Helicopter).





**MURIWAI
GOLF LINKS**

Andrew Jackson
General Manager

Mobile: 021 2253907 Ph: 09 4118454
muriwai.manager@golf.co.nz www.muriwaigolfclub.co.nz
P O Box 45 Waimauku 0842, Auckland, New Zealand

Club member Raelene Arthur raised more than \$2000 herself for the trust through selling her masks (Kumeu Courier, October 2020) and only had a few left for the garage sale in the Waimauku Hall.

Waimauku Lions fundraising committee member Grahame Edmonds says the garage sale was well attended and he hopes to see a good response to the bike giveaway too.

Jeweller moves north after 18 years

Traffic and "a change of scenery" are prompting Natalia of Chateau Jewellers to leave for Waipu in February after more than 18 years in Huapai.



The COVID-19 pandemic saw a drop off in business for some - but not Natalia's jewellery manufacturing, repairs and sales.

"People had more time to go through their jewellery and, with less chance to travel, were spending more on repairing and cleaning it," she says.

She's been flat out and says it's become almost too busy for her alone.

Starting her jewellery business in the Kumeu Village shopping centre, Natalia moved up the road to the Huapai shops after five years to have an 18-year tenure in the well-known store.

She'll be leaving it by March 1 next year but will continue providing a service for local customers through a regular pick up and drop off programme, probably about twice a month.

"I don't want to leave my customers in the lurch, so I will work towards doing something which helps them," Natalia explains.

Her work will probably concentrate more on repairs and



Tile Wright®

- Bathrooms
- Kitchens
- Splash Backs
- Waterproofing

Josh Wright

027 260 8225

Tilewright@outlook.com

People & Places

manufacturing, the business expected to feature online as well.

She's one of the few jewellers left in West Auckland who still does repairs and makes her own jewellery.

Natalia says she's enjoyed her time in the area - she regularly entered a float in the Kumeu Christmas parade, now changed to a Christmas at the Showgrounds community event on December 4 at the Kumeu Showgrounds.

One thing she won't miss, though, is the traffic congestion here.

Natalia says State Highway 16 especially is becoming too difficult to negotiate at times as residential growth and increasing visitor numbers see more traffic on local roads.

It's not a rare issue with many people citing the traffic situation for moving further afield.

Natalia expects to enjoy Waipu's tranquility, though she will stay in touch with this area. Visit www.chateaujewellers.co.nz for more information and updates.

Big beach crowds expected

It has already been busy for the Muriwai Volunteer Lifeguard Service, which welcomed lifeguards back to the patrol tower on Labour Weekend.

And with forecasts of a long, hot summer the beach is about to become even more crowded.



President Jo Cooper gives "a huge shout out to all our club members who have volunteered again to keep Muriwai Beach as safe as we can over the 2020/2021 summer season".

"As a community I would like to invite you to join us in looking after 'our space' this summer.

"With a huge influx of visitors heading our way following a challenging year, we greatly appreciate the support you provide alongside our volunteers."

Jo says IRB driver and crew numbers have been bolstered and a new jet ski (RWC) will soon be introduced, providing added lifesaving capacity with progressive training sessions currently underway.

"Junior Surf is once again bursting with positive energy on the beach every Sunday. It is not too late to join the fun."

Volunteer patrol hours are currently Saturday and Sunday, 10am to

4pm.

The paid lifeguard service started November 30 and runs Monday to Friday through to March 2021.

"Outside of patrolling hours, your local and incredibly committed 'call out squad' continues to be on hand in support of emergency services," Jo says.

Remember to call 111 if assistance is required outside of patrolling hours.

Jo suggests swimming between the flag and advising others to do so, and leaving inflatable pool toys at home.

"Keep an eye out for us in our red and yellow and say 'hi'.

"We look forward to seeing you on the beach and assist us with what we do best - keeping Muriwai Beach safe." Visit www.surflifesaving.org.nz for more information.

Auckland Folk Festival at Kumeu in January

The 48th Auckland Folk Festival returns in January 2021 with a diverse and eclectic line-up of artists.

The three-day celebration at the Kumeu Showgrounds runs over Auckland Anniversary Weekend (January 29-February 1) and is expected to attract about 3000 campers and day visitors.



Spread across its six stages will be The Eastern, Delaney Davidson & Barry Saunders, Jenny Mitchell, Aro, The Black Quartet, The Harmonic Resonators, and Looking For Alaska - to name a few.

While 2020 was a tough year for the events industry with musicians hit hard by COVID-19 restrictions, the Auckland Folk Festival returns as a celebration.

It's not just of those artists performing on the stage, but for those who want to jam, collaborate and see old friends, celebrating the strength and diversity of New Zealand with the festival being both proudly culturally and gender diverse.

Camping spots in the heart of the festival see jams go well into the night.

"The music never stops at the festival, except for perhaps a brief minute in the early morning when there is a change of the guard

KUMEU TYRES LTD Main Road, Kumeu

New Tyres
Truck Retreads
Used tyres

Wheel Alignments
Great Service
Fleet service

Phone Neil 09 412 9856

The Picture Framing Company LTD.

We will frame anything!



- ✓ Competitive prices
- ✓ Professional Framers
- ✓ Knowledgeable Team
- ✓ Friendly Service
- ✓ Integrity
- ✓ Quality

Established in Kumeu for 20 years

Ph 412-6224 · www.pictureframing.co.nz · 14A Shamrock Drive, Kumeu

People & Places

from the all-nighters to the early starters," Artistic Director Finn McLennan-Elliott says.

"Jamming is crucial to the ethos of the festival, providing opportunities for everyone to play and create.

"We are very happy to share the first of our 2021 line-up. We are especially proud of its diversity, something we've strived for and succeeded at for many years.

"Folk music is a fluid genre, one that is more about community and people than about exact instrumentation, and we are excited to present a line-up that showcases many different sides of folk."

Whether you are dancing the night away in one of the three ceilidhs, learning how to folk dance, enjoying a concert or participating in a workshop there is something for everyone.

Food trucks will be there too.

The ever-popular Kids Stage returns, with its growing maze and early to late activities for young ones.

Children under 10 come free to the festival and have a dedicated programme of music and workshops.

This year sees iconic Wellington musician Gerry Paul as the headline Kids Stage guest bringing his fantastic Elephant Tree Band along for the show.

All marquees are covered but open sided, and as will be the song of the summer, the festival will be keeping a close ear for any government announcements or regulations for gatherings and will ensure a safe environment for all.

With an entire showgrounds to spread across, there is plenty of space for all.

Tickets are on sale now via Eventfinda, with early bird tickets closing December 31. The full festival timetable is released in January 2021. Visit www.aucklandfolkfestival.co.nz or www.facebook.com/aklfolkfest/ for more information.

The Greenies are coming

Two neighbours yarning over their boundary fence during the COVID-19 lockdown has led to a newly launched garden waste recycling business.

Monte Neal and Steve Lee of Huapai saw an opportunity for such a service covering the NorthWest and West Auckland.

That resulted in the formation of Greenie Garden Bins, providing 240-litre appropriately coloured wheelie bins to customers for green waste which is then collected and recycled as compost.

Hedge trimmings, lawn clippings, weeds - anything growing considered garden waste (but not food scraps) is all fair game for the Greenie Garden Bins.

It's all recyclable, all done to regulations and then on-sold as compost produced by another business.

A collection cycle is tailored for the customer - whether its four weekly, eight weekly or 12 weekly either collected from the kerbside or from your property, they cover it all to suit.

A small, six cubic metre Hino truck visits customers' properties to empty the bins according to the collection cycle.

"Our guarantee is if we don't deliver what we say, you don't pay," the pair add.

It's just the two of them to start with - but Monte and Steve have plans to expand eventually.

Steve was involved many years ago in a similar operation run by his dad in West Auckland, and people have often asked him why he hasn't got back into it.

He's running a successful interactive business called Go Vertical Events, which provides portable climbing walls, bungee trampolines, inflatable slides, mazes, Zorbs and more for children's functions, and shopping centre and holiday events.

His marketing nous has led to Greenie Garden Bins having its own mascot, uniforms, logos and more.

Monte brings a work ethic from running a local orchard which he sold about a year ago but still works on in a caretaker role, plus his involvement in many local organisations such as the Kumeu Cricket Club.

"So I was looking for another work opportunity, and I'm still dealing with growing things," he says.

Steve says people sign up for the Greenie Garden Bins service with the bin and collection provided as part of the fee, starting from as low as \$10 a month.

Changes in properties from the former standard home on a 1011.7 square metre (quarter acre) section to homes now taking up most of a smaller section are also helping foster green waste businesses.

There's less space for composting and other forms of green waste disposal, and it can get expensive taking frequent trailer-loads to an authorised disposal site.

"People take pride in their gardens and want to dispose of any waste correctly," Steve adds. "We provide that service."

Visit www.greeniebins.co.nz, email info@greeniebins.co.nz phone 0800 240 BIN (0800 240 246) or 027 Greenie (027 473 3643) for more information.

QUALITY WATER



SUPPLIES
7 DAYS PHONE NOW!
Dave, Bev & Andrew Speedy

Registered by Ministry of Health & Auckland Council
Fresh Water Supplies

Ph. **411.8116**
Mob **021.265.2389**



Pete Sinton
Managing Director

09 4122016 | 021 637772
49 Beach Street, RD 2, Sandspit, Auckland 0982

petesinton@townplanner.co.nz



LIGHT UP THE NORTH WEST

WWW.NORTHWESTCOUNTRY.CO.NZ

Westbrook Winery offers Christmas Platter



The Westbrook Christmas Platter makes a grand entrance this year.

It's a delightful offering of NZ lamb and mint jelly, champagne ham and mustard, feta-stuffed baby red peppers, Grinning Gecko cheese with beetroot relish, and chocolates to finish (serves four).

Pair this with some of Westbrook's great wines.

The Cellar Door is open daily 11am-5pm, but the wine fairies need a short break so it will be closed Christmas Day, Boxing Day, and New Year's Day.

Westbrook prides itself on wine and food pairing, so visitors will find that all platters, cheeseboards, and pizzas are cleverly wine-matched. Tasty goods from other artisan and local producers are incorporated in Westbrook's food offerings.

Westbrook is a boutique, family-owned vineyard where the fruit is hand-picked then carried 'up the hill' to the winery where the magic happens

Using a blend of time-honoured traditional techniques and modern technology, the winemaking team crafts it into award-winning wine which is bottled just 'up the road' - meaning 'low food miles'.

The Cellar Door also stocks a selection of wine-related items, snacks, and beautiful crystal Spiegelau wine glasses.

Bespoke gift boxes can be created for loved ones, hard-to-buy-for ones, hardworking staff, and clients.

See the Cellar Door team to stock up on your summer wines and get sorted for Christmas

gifts. Visit www.westbrook.co.nz for more information.

Rolling into the New Year

Marbles Business Solutions works closely with clients to provide impartial and independent advice on all things related to Human Resources (HR).

Need to recruit new team members, require employment law advice, or maybe you just want to offload some of your routine HR admin tasks?

Marbles has the know-how and can offer a range of solutions to suit your business needs.

While spending time with our loved ones enjoying the festivities of the Christmas season, Marbles Business Solutions will have skeleton staff available for any urgent HR or employment law concerns.

If you need to reach out to us over this time please contact enquiries@marbles.org.nz or phone 0800 100 347.

Win a Mission Sea Kayak and more from NJC Hire

A Mission Sea Kayak with paddle, cart, fish finder, lifejacket and radio - plus some flash NJC Hire merchandise - all valued at more than \$4000, can be won by customers of NJC Hire during December.

Totally locally owned and operated, NJC Hire at 33 Grivelle Street in Kumeu can provide equipment hire needs from small DIY projects to large commercial jobs.

You name it and NJC Hire probably has it.

NJC Hire is open Monday to Friday, 6.30am-5pm, and next year will open Saturday 7.30am-2pm.

You can also get your gear there up until noon on December 24, the business reopening January 5 with a skeleton crew and fully operational again from January 11.

As a special promotion NJC Hire has weekend hire for only a one-day rate with pick-up

from 3pm Friday and returns on Monday by 9am - conditions apply.

NJC will light up its premises for Christmas - so keep watching.

Follow NJC Hire on Instagram and Facebook visit www.njchire.co.nz, email info@njchire.co.nz or phone 0800 652 555 for more information.

Pamper yourself and be in to win a Christmas hamper

At lovesoul Beauty and Spa Studio we believe in natural skin care, slow beauty and self-care.

We offer holistic facials, massage and spa packages, and all your essential beauty therapy treatments.

A locally owned and operated small business, lovesoul is in the centre of Waimauku.

This December we have a LOVE YOUR SOUL Hamper to be won.

It's valued at \$380 and is packed with all the things we believe encompass self-care; a lovesoul Relaxation Massage voucher, our organic herbal tea, reusable eco-friendly accessories and, of course, chocolate and wine, and more.

Visit lovesoul.co.nz/win for details on how to enter.

We are open Monday to Saturday from 9am, and will close for the holidays between December 24 and January 10.

This is the busiest time of our year, so don't miss out.

Book online today at lovesoul.co.nz/book and be in to win - you deserve it!



WWW.NORTHWESTCOUNTRY.CO.NZ

Safer Communities



Waitakere Volunteer Fire Brigade wish you all a safe and Merry Christmas. We thank you all for your support throughout the year. To our wives, husbands, partners, children, family, friends, work colleagues, teammates, and anyone else we have had to up and leave at the sound of the siren - thanks for your support.

A simple guide for this summer:

- The restricted fire season will be coming into force shortly for the Auckland mainland and a prohibited fire season for the Hauraki Islands. If you wish to light a fire in the open air during a restricted fire season, you will need to apply for a fire permit. You can apply for a free fire permit online at www.checkitsalright.nz/

- You can have an outdoor cooking fire such as a BBQ, hangi or umu or a heating fire such as an approved brazier. However only dry, untreated wood should be used, and smoke must not be causing a safety concern

Please use the more environmentally friendly ways of disposing of your rubbish and be aware that all fires should be extinguished by nightfall. If a prohibited fire season is imposed during the summer all fires will be banned.

If in doubt, check before you light

Keep safe, have a Merry Christmas and a happy New Year

Keep safe



Denis Cooper

Deputy Chief Fire Officer
Waitakere Fire Brigade
Phone 09 810 9251



Jojo's ChildCare Ltd

Warm and nurturing environment

Large play spaces for all ages

Healthy, hearty, home style meals

High quality curriculum

Exceptional resources for play and learning

3 Days free for 3 - 5yr olds* conditions apply

Nappies provided for Under 2's

Contact Sarah or Jo
www.jojoschildcare.co.nz
09 412 5325



Corner Oraha Rd & State Highway 16, Huapai

Community News

Wanted: Quality childcare

At A Child's Place we pride ourselves on our low ratios. Research shows that children who are cared for in ECE settings with lower child-staff ratios receive more stimulating and responsive care.

Relationship is key to our philosophy it is a matter of life to a child. Our settling in processes are such that all our families are amazed at how quickly their children are happy to leave them in the mornings.

If you are looking for that special 'home away from home' then look no further. We offer authentic teaching practices with large play areas, uninterrupted play, partnership in learning and a range of sessions for your infant, toddler or preschooler.

You will find us at 1A Tapu Road, Huapai, contact us for more info on 09 412 8117 or visit us at www.achildsplace.co.nz. We would love to hear your aspirations and hopes for your child.



Born to ride?

Walking and cycling are more natural to us than driving, and allow us to keep touch with nature and our communities, while we keep fit and go places. Covid-19 lockdowns showed that people will chose to walk and cycle more - when they feel it's safe to do so. Often, riding a bike is more efficient, quicker, and it's always more fun, than driving a car.

Bike Kumeunity is all about improving walking and cycling in our area, encouraging healthy and fun trips by pedal and foot power. That involves safer streets and social change.

That's why we run community rides, to encourage exploration of our

area by bike, opening up new routes and new corners of Kumeu to ride. Keep an eye on Bike Kumeunity on Facebook, for coming rides and opportunities to burn fat, not oil, in touch with our better nature.

Nature's Explorers Kindergarten

At Nature's Explorers Kindergarten we are child directed and play based. The children are able to set up the environment and are encouraged to work alongside their friends to contribute together. We allow the children to learn at their own time and space to develop their interests, skills

and understanding. We inspire to be a home away from home Kindergarten. We believe that early childhood education is the most important time in a child's life for their own personal growth and development. It is a valuable time for tamariki to develop all aspects of their hauora—physical, emotional, social, and spiritual wellbeing. We strongly believe in creating a beautiful nature rich environment and celebrate the child as a whole. We use natural and recycled materials to enhance our tamariki's creativity and to connect to the natural world around them. We are inspired by the Reggio Emilia approach and honour the uniqueness of each individual tamariki and their Whanau. We value Whanau ideas, experiences, and culture. Through this we are committed to supporting children to feel a high level of belonging at the centre.

If you are interested in your child joining our little group of explorers, please call Nerys on 09 412 8800 or email office.kindergarten@xtra.co.nz.



Muriwai Open Studios update

December and summer is upon and we can think of no better way to celebrate it than sharing with you our wonderful creativity in Muriwai's local gallery, Ocean View Art Gallery. The Muriwai Open Studios Arts Collective are proud to present "Celebrating Summer in Aotearoa" from the 5th December until the 20th December - with the opening of the exhibition on Sat 5th December at 4 - 6.30pm at Ocean View Art Gallery, 77 Waitea, Rd, Muriwai. Our collective of artists include a wide range of mediums and we are sure you will be able to find just that special work of art or gift for someone that you

ECHO
DRAINAGE LTD

Doug Graham

REGISTERED DRAINLAYER

Telephone 021 416 420

78 Puriri Road, Whenuapai, Auckland 0618

Done Right. First Time. Guaranteed

ECHO
DRAINAGE LTD

Providing a quality professional service in Drainage to the entire Auckland region

- Commercial Drainage • Domestic Drainage • Septic Tanks
- Basement Leaks • Waterproofing • Hydro Jetting
- CCTV Camera (fault finding/locating) • Earthworks
- Tip Sites • Digger Hire • Tip Truck Hire

Watercare
An Auckland Council Organisation
WATERCARE APPROVED

WWW.ECHODRAINAGELTD.COM

Kumeu Huapai
PANELBEATERS

PHILIP GRIMMER

Ph/Fax: 09-412 8054

Mobile: 027-498 7727

Email: khp@xtra.co.nz

PO Box 737 Kumeu

280 Main Road, Kumeu, SH 16



Community News

want- or just enjoy seeing new work from this creative group that have worked hard this year to put Muriwai on the map as an artistic destination.

Celebrating Summer in Aotearoa | Ocean View Art Gallery | 77 Waitea Rd, Muriwai. Opening hours 10.30 - 5.30 pm daily | Opening function Sat 5th Dec 4 - 6.30 pm.

Second hand shop coming to Kumeu

The Compass Collective is being started by Anna Wheeler, a local in Riverhead with a passion for 2nd hand clothing and helping the community and surrounding areas.



The shop is set to open in Feb 2021 with profits going to local and wider community groups/ clubs big or small. Donations needed! Accepting all good quality women's, men's and kids clothes, shoes, accessories, jewellery and linen (please no house hold items or bric-a-brac). Think local before you use a clothing bin for unwanted clothes -your support is hugely appreciated. Upcycle, recycle, reuse - help our community and the planet!

Follow Compass Collective on Facebook to find out where to donate over Dec and Jan before the shop opens.

You may recognise this space - watch it transform into your local 2nd hand clothing shop.

Kaukapakapa Library

Sunday 17Th January, 9am to 1pm at Kaukapakapa Library - meet Author Janice McMurdo.

Linked to her earlier work 'The Bird's Nest', author Janice McMurdo's second novel is also set around the Kaipara Harbour and South Head Peninsula, an area where she grew up. Depicting life in New Zealand in the 1930's, the characters Stefan, Lindy and Jeannie portray that with perseverance and resilience it is possible to overcome adversity. Janice draws on both her memories of the Kaipara area and her study of hypnotherapy for her inspiration, and writes in an easy, natural way which makes you want to keep

turning the pages. Come along to the Library, meet Janice and find out more. Kaukapakapa Library is open in conjunction with the Kaukapakapa Village Market. For more details, contact Megan Paterson, threehorses@extra.co.nz, 021 959 017.

Kaukapakapa Village Market

Sunday 20 December 8.30am to 1pm. Bring the kids along for a photo with Santa in his sparkly grotto located in the historic Kaukapakapa Library next to the hall, free face painting and great entertainment with special Christmas performances from the ladies of "The Cougar Chorus" and the students from "DanceVille". A great opportunity to buy local this Christmas with loads of unique gift ideas from our craft and gift stall holders, as well as fresh produce, artisan food & preserves, plants, books, food, coffee and more.



Our first market of 2021 is on Sunday 17 January - a great way to spend a relaxing holiday morning, plenty of quality stalls, preserves, food, coffee, fresh local produce, live music and much more.

Wishing you all a very Merry Christmas and an awesome 2021!

For more information contact Sarah 027 483 1542 or email sarah1@maxnet.co.nz.

All Saints Kaukapakapa Cemetery

Work is progressing in the old Kaukapakapa Cemetery with the worst of the restoration work almost completed. It's great to see the place 'coming back to life' and looking a little more loved. The NZ Remembrance Army have finished the work on the veteran graves and it's fantastic to see some headstones go from being illegible to looking like new. A voluntary group, it has been an honour to get to know them and we are incredibly grateful to have had their support. You can find out more about them on their Facebook page. Thompson Memorials have also been doing an outstanding job getting some of our fallen back in to an upright position. It's been an interesting exercise finding out more about some of the older graves. We thought the McLeod grave would be related to the Helensville McLeods, or the Waipu McLeods who married into the Simcock family. Turns out they were McLeods from Henderson's



VEHICLE TRANSPORT SERVICE

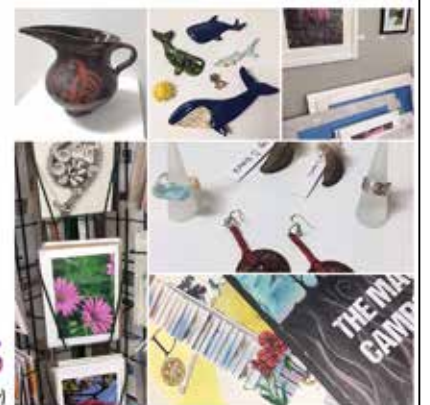
ALL AREAS INCLUDING
MURIWAI BEACH TOWING
7 DAYS A WEEK.

Ph: 0800 200 227 Mobile: 027 286 9383
WAIMAUKU/WOODHILL BASED

Shop Local!
Buy unique,
hand-made gifts,
art and crafts.

- Jewellery
- Cards
- Prints
- Artworks
- Ceramics
- Calendars

KUMEU ARTS
300 Main Road. (behind the Library)



Community News

Mill and are related to the Lindsays and the Shanks families. Next time you're passing the cemetery, drop in for a visit, it's an important part of the history of Kaukapakapa Village. We have also just started up a 'Friends of All Saints Cemetery, Kaukapakapa' Facebook page. There's more work to do, but thanks to everyone who has been involved from the All Saints Kaukapakapa cemetery committee and Megan Paterson.

Art Club - the place for kids who love all art

Kumeu Children's Art Club is like no other art class. Children can try their hands at all forms of art - not just painting and drawing, but also clay work, print making, sculpture, even origami and making our own Christmas wrapping paper.

The Art Club has been operating as a non-profit Charity since 1998 - and has nurtured generations of local kids allowing their inner artists to flourish and excel.

Centrally based at Kumeu Arts near the library, the Art Club is a special offer, where the only rules are to be kind and love art. However, because we are also about creating a culture of peace, we never allow violence in our subject matter, meaning the Club shows the path for a more calm and peaceful culture and future for the world.

Art Club operates on Thursdays after school and bookings can be made directly through Kumeu Arts www.kumeuartscentre.co.nz.



The Mobile Car Specialists

Do you think the Jolly Fat Man will get held up in quarantine this Christmas? Hmmm... stranger things have happened... like 2020.

Despite the peculiar events and uncertainty that has unfolded over the past few months, we've been busier than ever working on Kiwi's cars, making them look awesome again.

We've met a ton of new customers and touched base with loads of repeat clients too - and we've really enjoyed interacting with you all!



Thank you to everyone who has trusted us with their vehicles during 2020. We truly value and appreciate your business.

Whatever 2021 may bring... enjoy being around friends and loved ones. We'll see you in the New Year.

Our services include: Dent removal - small to large, high quality paint correction / cut and polish, contaminant removal (metal grindings, paint overspray etc on the paint work), ceramic coating paint protection, yellow / foggy headlight restoration, signwriting removal.

We are a fully mobile operation, meaning we come to you to make your life easier.

Contact us on 0800 20 30 20 for a quote, or visit www.TMCS.co.nz to see our work and 5 star reviews.

Kumeu Montessori Preschool

In order to face the challenges of the 21st century, our children need to be critical and creative thinkers. We are now ensconced in the knowledge age with its unique challenges that are largely undefined as yet.

We all know that play contributes positively to a child's sense of well-being. It enhances a child's natural capacity for intense and self-motivated learning. It helps build creative and critical thinkers, and lets children test social boundaries. Play produces curiosity, openness, optimism, resilience and concentration. It enhances a child's memory skills, develops their language skills, helps regulate their behaviour, advances their social skills and encourages academic learning to take place.

Kumeu Montessori is an established, privately owned boutique early childhood centre for children aged 0 to 6.

We value a play-based pedagogy approach which encourages children to think outside the square and be creative. We arrange materials in provoking and inviting ways to encourage exploration, learning and inquiry.

We support children to gain not just academic skills for school, but wider social emotional skills and dispositions for learning such as determination, confidence, persistence, and resilience, we aim to prepare children not just for school, but for life.

Our tamariki are closely connected to teachers who know them and their family. Our teachers encourage a sense of wonder and delight



NOR-WEST & KUMEU
GLASS SERVICES

Specialists in Windscreens & Glazing

46 Main Road
Kumeu
PO Box 626
Kumeu 0841

Darren Hakesley



Phone: 412 9914
420 7818
038 1499
Fax: 412 7875
Mobile: 0274 965 596
nwks@xtra.co.nz



SERVICE CENTRE

EOIN STUART

Phone 09 412 5900 | Mob 022 639 0274
338 Main Road Huapai - Kumeu, Auckland 0810
autoworxnz@outlook.com

Community News

in our children ensuring that their natural curiosity, joy and energy is nurtured.

Our approach is to create a balance between learning through play and deliberate acts of teaching.

Come and see us today at 8 Grivelle Street, Kumeu www.kumeumontessori.co.nz, phone 09 412 9885.

Container inspections

While it has been a tough year for imports, many local businesses are still able to bring imports into New Zealand and make the most of our changing economic environment. For small businesses the cost of importing shipping containers and managing Ministry of Primary Industry costs can be off-putting. NZ Biosecurity Services Limited offer a service to help small importers have sea containers delivered to your warehouse and devanned under our team's supervision. Additionally, if you are struggling with holding onto full time staff and have your own transitional facility license but just need help with accredited person services, then we can help too at a reduced rate. We can respond on short notice taking the



stress out of your logistics pathway. Come and chat to the team now about how we can help you make your importing business a success.

December at Kumeu Arts

Winding down for Christmas we have some exciting events. 'Pop up Markets in the Pod' will run over two weeks in December, with the Market day being Saturday 12th and 19th of December 10-4pm. Here we will have a selection of our member artists showcase creative gifts just in time for early bird Christmas shopping. Our annual 'Affordable' exhibition will run from the 2nd - 19th of December, artists will be exhibiting original work at accessible prices, get in quick for your deal.



Kumeu Live will be hosting Caitlin Smith Saturday night 12th December, refer to Kumeu Live Facebook page for more details.

For information on classes and workshops go to www.kumeuarts.org.



*Free Sessions
for over Threes**

Also 50% off fees for the first 12 weeks*

We are a beautiful boutique centre with small group sizes, a safe hygienic environment with an experienced, dedicated teaching team that you can trust with your precious children.

Family owned and operated by two highly experienced ECE teachers, we provide an excellent quality, affordable education and care programme for children aged 6 months to 6 years.

To help meet your families changing needs in these challenging times we are now offering free flexible hours for children over 3! Contact us for more details.

We welcome visits by appointment and can't wait to meet you!

Bronwyn and Danielle
8 Grivelle Street, Kumeu
Ph: 09 4129885

Email: managers@kumeumontessori.co.nz

www.kumeumontessori.co.nz

*Conditions Apply - contact us to find out more!

In Brief

Kumeu Library

December is here, bringing with it both Christmas and the summer school holidays. Kumeu Library will be open throughout the holiday period, closing only on Sundays and Public Holidays (25, 26 & 28 December 2020, and 1, 2 and 4 January 2021). Don't forget that over the summer holiday period we extend the loan period for most items to accommodate statutory holiday closures.

Kumeu Library will be holding loads of events for children over the school holidays, starting with Christmas Craft sessions for school-aged children at 10.30am on Tuesday 22 December, Wednesday 23 December and Thursday 24 December. Then there will be daily activities at 10.30am for school-aged children throughout the summer holidays, starting on Tuesday 5 January. With a different fun, free activity every day, we've got your summer entertainment sorted. We'll also have in-library activities to do any time, including the popular scavenger hunt.

For kids aged 5 to 12, we'll be running a Creatures of the Deep challenge at Kumeu Library: The challenge is to design and build a sea creature (either real or imaginary) out of anything (cardboard, plastic bottles, Lego - anything except foodstuffs!) - as long as you include somewhere in your creation all the mystery components from the bag we'll give you. The challenge runs from Tuesday 5 January to Saturday 23 January - make sure you come into the library to pick up your mystery components before you start creating. There'll be an awesome prize for the winner.

Keeping the kids reading over the long summer break is important, so Kumeu Library is running a simplified version of our Summer Reading Programme - you can encourage your children to read every day by taking a ride on the Reading Wave. No sign-up is necessary, just come in to Kumeu Library and pick up the challenge sheet. Come into the library and show us you've completed the whole Bingo page, and go into the draw to win an awesome prize.

Adults and teens can join in the summer reading fun too, with our online Summer Reading, Sorted programme - read, relax and reset

this summer with reading challenges and recommendations just for you. There are some really great prizes to be won, including Kobo eReaders and passes to Auckland attractions, including Snowplanet and the Stardome. This programme runs from 1 to 31 January 2021.

Follow us on Facebook (www.facebook.com/kumeulibrary) to keep up with all Kumeu Library news, events and programme information.

French language immersion weekends in 2021

Bonjour les Francophiles! Catherine and Patsy from Boutique Tours France invite you to join them on one of the French Language immersion weekends in 2021. Are you a bit of a Francophile, you like the language of Voltaire, you like to speak French, or you want to improve your French?

Catherine and Patsy organise tours to France every year. This year and next year however, due to Covid 19, all travel to France is cancelled. So, the ladies bring a bit of France to NZ. The Immersion weekends are planned at different venues in the North and the South Island.

From Friday evening onwards you will be speaking and hearing French for the whole weekend. French language, culture, cooking demonstration, games, movie, quiz...it's all in the package Boutique Tours France offers.

Weekends are from \$650 per person - this includes 2-night accommodation - 2 continental breakfasts - 2 lunches- 2 dinners - aperitifs - 2 tutors et beaucoup plus. The French language immersion weekends take only 8 people. If this sounds like or you would like to know more? www.boutiquetoursfrance.co.nz - boutiquetoursfrance@gmail.com.



Need something lifted or shifted?

Kumeu based Hiab hire. 7 days
26 metre reach



Call us for all your lifting requirements.
Phone A P George; 027 229 2919

Seniornet Kumeu

The club held its AGM at the November meeting, and after successfully negotiating a difficult year (Covid19), we are looking forward to our Christmas celebrations and a brighter 2021. As you may have noticed, banks, insurance companies and many other large businesses are encouraging their customers to use their "online" services to conduct their business with them. AMI insurance has teamed up with Seniornet to support their seniors to get online. They have agreed to pay the Seniornet 2021 subscription for all



Grant Castle



P (09) 412 8239 | 106 Main Road, Kumeu
M 027 299 7054 | E.castlepanelbeating@orcon.net.nz

In Brief

AMI customers over the age of 50 who are members of Seniornet. Even more good news is that Seniornet Kumeu will be providing our training sessions free of charge to all of our members for the whole of 2021. So, if you would like to have fun learning how to get the most from your smartphone, tablet (including iPads) and computer, why not join our friendly and informal club with tutors who teach what you need at a pace that suits you. Contact: Brian Lacey on 022 1831811 brian@lacey.nz or Nigel Dempster at nigeldem@outlook.com.

One Days Grace celebrates 20 years making rosaries

Hi - I'm Deborah. My sister Kati and I own OneDaysGrace, making traditional & contemporary Catholic and Anglican rosaries and prayer beads. For 20 years our small Auckland business has been making rosaries, chaplets and faith jewellery, available to you online at www.onedaysgrace.co.nz.

We also make renaissance style paternosters, prayer beads for 12 Step recovery fellowships, and delight in creating special custom orders.

As well as handmade rosaries, we make beautiful faith-based jewellery, a range of gifts for celebrating special occasions and NZ's largest range of patron saint medals.

After all the talking, prayer is a language in itself. We hope our beads of praise will become useful companions in your life's journey - from our hands to yours. Our "hello" special - when purchasing from our website, please use our 15% discount coupon code: YEAR20 email: onedaysgracenz@gmail.com.

Join Kumeu Community Action to get things done

The African proverb 'It takes a village to raise a child' rings true for anyone who thinks about the huge number of essential interactions children receive as they grow up.

So what sized community will it take to mend our local issues of transport, schooling and infrastructure?

Well, it's likely to take our local community engaging in an ongoing series of positive interactions with the NZ Transport Agency, Auckland Transport, local government, local MPs and government departments, Kumeu Community Action (Kumeu Huapai Residents and Ratepayers Association chair Guy Wishart says.

"The bigger our community voice, the greater our chance of being

heard," he says.

Kumeu Community Action (KHRA) has been a significant voice for the community for many years.

"We are keenly aware that our greatest chance of making progress on our frustrating local issues is to have the support of the "village", Guy says

"We would encourage you to like our Facebook page and join Kumeu Community Action (KHRA) by visiting www.khrra.org.nz/membership.html for more information."

Thanks from the Scouts

I've been involved with Scouts for a while now, but have never seen a term like this one.

This term certainly has been full on. We have seen multiple camps all over the upper North Island including the outer islands in the Hauraki Gulf, we have seen Scouts supporting many events by assisting with volunteers to help run events throughout Auckland such as the Auckland Marathon, the Auckland City car rally, the Rodney Coast to Coast Challenge. We have seen groups out fundraising and taking part in many Christmas events and we have seen local businesses supporting groups by hosting after hours visits to their businesses and showing the Scouts what they do.

But most importantly, we have seen lots of smiles, laughter and excitement from the youth as they have taken part in these awesome adventures.

The Leaders in the Waitoru Zone have shown so much determination and commitment toward giving the youth the very best they can this term after the turbulent year we have had, and it doesn't stop there as a lot of 2021 events are well into the planning stages.

I would like to take this opportunity to thank everyone that have supported our groups this year and look forward to an even brighter 2021.

On behalf on Te Atatu Endeavour Sea Scouts, Edmonton Scout Group, Kereru Massey Scout Group, Whenuapai Air Scout Group, Riverhead Scout Group, Motutara/Waimauku Scout Group and Kaukapakapa/Helensville Scout Group I would like to wish everyone Happy Holidays and a safe and enjoyable Christmas.

This month's photo features our Kea section mascot (Koa the Kea). If you want to know more about Scouts, please visit www.scouts.nz, or drop me an email: zl.waitoru@zone.scouts.nz. Craig Paltridge - Waitoru Zone Leader.



Catholic & Anglican

Handmade New Zealand

- + rosaries
- + chaplets
- + saint medals
- + paternosters
- + gifts

www.onedaysgrace.co.nz

ONE DAYS GRACE
Beautiful
Beads of Praise

ANYTIME PEST CONTROL

FLIES, ANTS, COCKROACHES, FLEAS

RATS, MICE, SPIDERS, WASPS ETC.

WEEDSPRAYING

KEVIN MORRIS REGISTERED TECHNICIAN

PHONE: 09 411 7400 MOBILE: 027 277 7143

Property

Property market report

The national lower quartile house price was \$520,000 in October according to the Real Estate Institute of New Zealand (REINZ). This means it has increased by \$85,000* (+19.5%) since October last year, and by \$157,000 (+43.3%) since October 2017. That's an average increase of \$1000 a week over the last three years for homes at the most affordable end of the market (the lower quartile price is the price point where 75% of sales are above and 25% are below). In Auckland, where prices are the most expensive in the country, the lower quartile price has increased from \$654,000 in October 2017 to \$769,000 in October this year. That's an increase of \$31,500 over the last 12 months and \$115,000 over the last three years.

This means a 10% deposit on a home at the national lower quartile price would have increased from \$36,300 in October 2017 to \$52,000 in October 2020. The size of the mortgage needed to go with that would have increased from \$326,700 to \$468,000 over the same period. A 20% deposit for the same property would have increased \$72,600 to \$104,000 over the same three years, while the size of mortgage to go with that would have increased from \$290,400 to \$416,000. Those are pretty steep increases, especially when you consider what has happened with wages over the same period.

If you take the national median rate of pay for couples (male and female) throughout New Zealand aged 25-29, and assume they are working full time, that would give them combined after-tax pay of \$1713 a week in October this year. That's an increase of \$34.14 a week (+2.0%) compared to October last year, and an increase of \$129.91 a week (+8.2%) compared to October 2017. Over the last three years, the cost of homes in the part of the market likely to be of most interest to first home buyers has increased 43.3%, while the take home pay for typical first home buyers on the median rate of pay has increased by just 8.2%.

That suggests lower quartile house prices have risen at more than five times the rate of after-tax wages for typical first home buyers

over the last three years. But to get a complete picture of the pressure faced by first home buyers, we also need to look at what has happened to mortgage interest rates over the same period. In October 2017 the average of the two year fixed mortgage rates offered by the major banks was 4.70%. It fell almost continuously from there to 2.65% in October this year.

Economist signal that over the next 12 months nothing will change in this market however those economists said the market would fall by 15% post Covid 19 so let's see. Recent sales values are:

Coatesville	\$5,000,000
Helensville	\$375,000 to \$1,365,000
Huapai	\$899,000 to \$1,345,000
Kumeu	\$850,000 to \$3,250,000
Muriwai	\$1,325,000 to \$2,250,000
Parakai	\$630,000
Riverhead	\$980,000 to \$3,425,000
Taupaki	\$920,000
Waimauku	\$1,020,000 to \$4,125,000
Waitakere	\$880,000 to \$1,500,000

Whatever your situation, whether you are buying or selling, it pays to have a professional you can turn too. We provide at no cost to you a service to provide all relevant data to assist you buy and sell. In addition you will benefit from my 15 years of experience as a property professional. If you're thinking about buying or selling, please call me on 0800 900 700 or email me on graham.mcintyre@mikepero.com - Mike Pero Real Estate Ltd Licensed REAA (2008).

Quinovic

Just as Auckland returned to Level 1 and the country to some semblance of normality, New Zealand turned its attention to an election and referendum that culminated in a historic win for Labour. There's no doubt that housing will be a central part of the mandate for the next three years, with property owners and rental customers invested in the outcomes of these decisions. As we are a number of months removed from the passing of the Residential Tenancies Amendment Bill, we've been interested in the ongoing discussions in both our property owner and rental communities.

With much of the property market news being focused around the ever-increasing price of home ownership and rentals in markets with short supply, this story bucks the trend. From interest.co.nz, Greg Ninnes reports that Auckland has experienced a \$60 a week drop in rents for apartments over the past four months. With a significant drop in the number of international occupants over 2020 including tourists booking Airbnb's and international students, the competitive rents could drop further as more students depart New

KEMP BARRISTERS & SOLICITORS

Your local team of legal experts

Property Law

Litigation

Family & Relationship Law

Trust & Asset Protection

Wills & Estates

Commercial Law

info@kempsolicitors.co.nz
09 412 6000
25 Orahua Road, Kumeu



Friendly
Legal
Experts

- Property Law
- Business Law
- Employment Law
- Debt Collection
- Family Law
- Family Trusts
- Estates
- Wills

smith
AND PARTNERS

LAWYERS

293 Lincoln Road
Henderson, Auckland
PH: 09 836 0939
smithpartners.co.nz

Property

Zealand to go home. While weekly rent has declined in central Auckland apartments, the number of apartments rented out has almost doubled comparing September 2020 with 2019. The drop in apartment prices isn't shared by the greater Auckland region, with the entire area seeing a year-on-year increase of 2%.

What does this mean for apartment owners? Given the abnormal circumstances that are affecting the market, it's hard to forecast what a recovery of average rents would look like without having a clearer path out of international travel restrictions and the fight against COVID-19 as a whole. For the immediate future however, property owners are best to focus on tenancing their properties as consistently as possible, meaning a move for many away from short term stay and Airbnb into more traditional tenancy agreements.

As always I am happy to be contacted directly regarding to discuss rental market trends and upcoming compliance requirements for landlords at brendon@quinovic-wa.co.nz or 027 490 7777.

Need to negotiate with Santa to get onto the Nice List?

Do you need some help negotiating with Santa? If you find yourself not on Santa's Nice List this year then you have a variety of options. You can decide to do nothing (which may include throwing your toys out the cot, having a moan to your mate/spouse, or just drink the beer the kids leave out for Santa on Christmas Eve), but if that doesn't sit well with you then you could write to Santa and ask him what his problem is. Maybe there is some way you could work it out, or something you could do to right the wrong - maybe Santa doesn't have a clear record of the facts and you could clear up a few misunderstandings. If that letter gets lost in the post or Santa is too busy to respond, then perhaps you could file with the Disputes Tribunal. It's a handy resource as Santa will have to attend in person and isn't allowed to take his lawyer. Assuming your wish list this year is under the magic number of \$15,000 (or if Santa agrees then \$20,000) then the Disputes Tribunal will hear your complaint, however they won't make Santa send you presents if they agree you were right but it's a good start to resolving a dispute. Another idea is to ask Santa to meet you for a chat and see if you can work it out - or maybe your lawyer could talk to Santa's lawyer and negotiate a resolution.

If your beef isn't with Santa then ClearStone Legal can also help resolve matrimonial disputes, neighbourly disputes, employment disputes, shareholder disputes - or we can help put an agreement in place before the dispute arises. If you need some help negotiating with Santa or someone else then contact ClearStone Legal, phone 09 973 5102 to make an appointment.

Enduring Powers of Attorney

An Enduring Power of Attorney (EPA) allows you to appoint someone to act as your attorney in certain circumstances and endures beyond any loss of mental capacity. There are two sorts of EPAs under New Zealand law. One for Health (dealing with matters relating to your general care and welfare) and another for Property (dealing with your property affairs). In each case, it is essential that you give your EPA to a person you trust completely to uphold your financial or health interests.

Your EPA must be given before you have lost capacity to understand and appreciate your own property or health interests. It is possible for someone to apply to the court to be appointed as your property manager or welfare guardian if you lose capacity without granting an EPA. However, that process can take very long and involves significant costs. The court order will also need to be extended every 3 years.

We recommend that you make your EPAs while you enjoy good health rather than assume you will have early warning about losing capacity. For further advice and assistance in preparing your EPAs feel free to contact Kemp Barristers & Solicitors at info@kempsolicitors.co.nz or 09 412 6000.

Understanding the Holidays Act

By Carolyn Ranson, Partner

For Monday to Friday workers, as Christmas Day and New Year's Day fall on week days they will be observed on the days they fall (Friday 25th December 2020 and Friday 1st January 2021) and employees will be paid for those days if they would otherwise be working days for them. As Boxing Day, and the day after New Year's Day fall on the Saturdays this year the holidays are 'Mondayised'. This means they will be observed on the following Monday in each case, being Monday 28 December 2020 and Monday 4 January 2021. Monday to Friday employees will have those days off and receive full pay.

For weekend workers, as Boxing Day, and the day after New Year's Day fall on the weekend they will be observed on the days they fall. This means that employees will not work on Saturday 26th December 2020 and Saturday 2nd January 2021 but will receive full pay.

Casual/On Call Workers are entitled to receive payment for a public holiday if it would otherwise have been a working day. For example, if an employee can show a pattern of working on Fridays, they would more than likely be entitled to be paid for Christmas Day and New Year's Day.

VODANOVICH
LAW

SALES & PURCHASE OF REAL ESTATE
RELATIONSHIP PROPERTY | BUSINESS STRUCTURES
POWERS OF ATTORNEY | WILLS & TRUSTS
COMPANY & EMPLOYMENT LAW

PLEASE CONTACT IVAN

ivan@vlaw.co.nz 09 412 8000
4a Shamrock Drive Kumeu, Auckland



**Henderson
Reeves**

creating smart legal solutions

P 09 281 3723 F 09 438 6420

E auckland@hendersonreeves.co.nz

PO Box 217, Waimauku 0881

www.hendersonreevesauckland.co.nz

Area Property Stats

Every month Mike Pero Real Estate Kumeu assembles a comprehensive spreadsheet of all the recent sales in the area that reviews the full range of Residential transactions that have occurred. To receive the full summary simply email the word "full statistics" to kumeu@mikepero.com. This service is free from cost.

SUBURB	CV \$	LAND AREA	FLOOR AREA	SALE PRICE \$	SUBURB	CV \$	LAND AREA	FLOOR AREA	SALE PRICE \$
COATESVILLE	3,925,000	1.08HA	423M2	5,000,000		930,000	438M2	178M2	980,000
HELENSVILLE	1,380,000	2.99HA	191M2	1,365,000		1,015,000	626M2	198M2	1,152,000
	1,075,000	2.22HA	120M2	775,000		790,000	189M2	143M2	850,000
	650,000	772M2	126M2	786,000		1,075,000	603M2	211M2	1,168,000
	1,325,000	4.12HA	106M2	1,335,000		1,115,000	899M2	207M2	1,360,000
	1,150,000	4.2HA	72M2	1,310,000		830,000	875M2	121M2	895,000
	820,000	925M2	110M2	850,000		1,075,000	493M2	228M2	1,075,000
	570,000	460M2	95M2	700,000		550,000	525M2	205M2	1,012,500
	780,000	627M2	187M2	880,000		810,000	346M2	171M2	954,000
	800,000	931M2	142M2	950,000		1,450,000	1.11HA	260M2	1,515,000
	800,000	711M2	189M2	890,000		940,000	669M2	188M2	1,100,000
	710,000	655M2	160M2	710,000		3,450,000	4.04HA	336M2	2,750,000
	560,000	1214M2	111M2	805,000		3,800,000	2.17HA	171M2	3,250,000
	920,000	556M2	160M2	940,000		1,950,000	1HA	325M2	2,265,000
	750,000	706M2	94M2	845,000	MURIWAI	2,000,000	1.65HA	296M2	2,250,000
	680,000	915M2	119M2	676,000		910,000	1370M2	122M2	1,380,000
	690,000	717M2	170M2	735,000		1,425,000	974M2	221M2	1,325,000
	810,000	1214M2	109M2	760,000	PARAKAI	500,000	0M2	98M2	630,000
	530,000	465M2	82M2	690,000	RIVERHEAD	600,000	805M2	230M2	1,390,000
	710,000	720M2	128M2	745,000		1,025,000	1214M2	139M2	1,201,000
HUAPAI	1,075,000	613M2	211M2	1,082,000		1,375,000	800M2	259M2	1,418,000
	1,200,000	772M2	265M2	1,280,000		910,000	806M2	168M2	980,000
	890,000	600M2	150M2	930,000		1,025,000	548M2	175M2	1,230,000
	1,300,000	893M2	288M2	1,300,000		1,050,000	1HA	100M2	1,220,100
	1,300,000	1541M2	240M2	1,345,000		1,300,000	800M2	230M2	1,430,000
	1,125,000	2253M2	210M2	1,228,000		1,325,000	1187M2	232M2	1,530,000
	860,000	620M2	126M2	899,000		1,375,000	600M2	274M2	1,537,500
	1,325,000	1019M2	241M2	1,325,000		2,625,000	4.17HA	133M2	3,425,000
	550,000	700M2	380M2	1,240,000	TAUPAKI	3,850,000	61HA	260M2	16,000,000
	890,000	809M2	190M2	920,000		700,000	1012M2	70M2	920,000
KUMEU	1,650,000	1.24HA	206M2	2,600,000	WAIMAUKU	1,575,000	1546M2	297M2	1,575,000
	870,000	375M2	178M2	945,000		5,800,000	8.32HA	305M2	4,125,000
	3,400,000	2.08HA	390M2	2,290,000		1,375,000	1604M2	253M2	1,405,000

DISCLAIMER: These sales figures have been provided by a third party and although all care is taken to ensure the information is accurate some figures could have been mis-interpreted on compilation. Furthermore these figures are recent sales over the past 30 days from all agents in the area.

Mike Pero's **low** commission rate:

2.95% Up to \$490,000 (Not 4% that others may charge!)

1.95% on the balance Plus \$490 admin fee. All fees and commissions + GST

Mike Pero Real Estate Hobsonville also provide statistical data FREE from cost to purchasers and sellers wanting more information to make an informed decision. Phone me today for a FREE summary of a property and surrounding sales, at no cost and no questions asked. Graham McIntyre 027 632 0421 *Available for a limited time. Conditions apply.

mike Pero | REAL ESTATE

This page is sponsored by Mike Pero Real Estate, Kumeu
Phone 0800 900 700 Licensed REAA (2008)

Graham McIntyre
Brand & Territory Owner
027 632 0421





Gear up for BBQ season with Mitre 10 MEGA

\$399



Weber

Baby Q 1000 BBQ

Titanium (also in black)

239457

\$569



Weber

Q2000 BBQ

Titanium (also in black)

318399

\$949



Weber

Q 3100 LP BBQ

Titanium (also in black)

239459



\$19⁹⁵

Weber

Q Cleaner 500ml

219693

Starting from **\$34⁹⁵**



Weber

Premium BBQ Covers

Assorted SKUs

Starting from **\$69⁹⁵**



Weber

Half Hot Plates

Assorted SKUs

Mitre 10 MEGA Westgate & Henderson

Northside Drive & Lincoln Road

Monday to Friday: 7am - 7pm

Weekends: 7am - 7pm



MEGAWestgate
MEGAHenderson

**MITRE 10
MEGA**

**WESTGATE &
HENDERSON**



SEA VIEWS, 4 ACRES, AFFORDABLE LIFESTYLE

4 1 1

\$1,145,000

7 Kaipara Lake Road, Helensville Asking Price \$1,145,000

Set high with sea views and land on the exclusive Tupare Estate. This renovated four bedroom home offers easy living on one level. Open plan living with great indoor outdoor flow to decking overlooking the idyllic Kaipara Harbour make this home more than a lifestyle option but a picture paradise. Tupare Estate delivers a range of high end facilities which are free from cost under the payment of a very modest annual fee. Home owners share an enviable number of community facilities, including a large hall which may be reserved for private functions, flood lit tennis court and a comprehensive equestrian facility which includes an arena, stables, wash bay, stock yards and a loading ramp. A well presented community of premium lifestyle blocks. This gentle flowing estate of 1.6 hectares (4.12 acres).

www.mikepero.com/RX2486586



Graham McIntyre
027 632 0421

graham.mcintyre@mikepero.com

Mike Pero Real Estate Ltd. Licensed REAA (2008)

www.mikepero.com



SUNSHINE MEETS ALFRESCO IN NEAR NEW LUXURY APARTMENT

3 2 2

By Negotiation

G07 / 57 Mapou Road, Hobsonville By Negotiation

For you, in the future, or as an investment with fantastic tenants in situ and keen to extend their stay. Big balcony, large ranch-slider into entertainers kitchen-dining and lounge. Luxury apartment living at its best. Near new this 3 bedroom apartment with two bathrooms, modern colours and clean lines, this apartment is an absolute rarity. The apartment offers easy care open plan entertainment living with the added benefit of being a complete lock-up and leave property. It has a secure basement parking with two tandem carparks. Up-spec kitchen with show-home form and function, and the simplicity of heat pump air control for all seasons. A short distance from Hobsonville Primary and Secondary Schools, Parks, café's and transport links.

www.mikepero.com/RX2528743



Graham McIntyre
027 632 0421

graham.mcintyre@mikepero.com

Mike Pero Real Estate Ltd. Licensed REAA (2008)

www.mikepero.com



EXTENSIVE SHOW HOME UPGRADES AND HOMELY FINISH

4 2 2

By Negotiation

13 Podgora Avenue, Huapai **By Negotiation**

A generous four bedroom, two lounge home with two bathrooms and two separate w/c's, it delivers to the needs of a larger family or the buyer that wants space for multiple entertainment and office options. An excellent work from home property with room/office downstairs with guest w/c and easy access to kitchen and alfresco. Upstairs has three generous bedrooms and a second lounge/ retreat with ample space and awash with sunshine. Elevated views which extends to the planted tussocks of the reserve strip. Absolutely uncompromised alfresco from an elaborate open plan entertainers kitchen-dining-lounge seamlessly linking to covered decking enjoying sunshine late into the afternoon and yet sheltered well from the prevailing wind.

www.mikepero.com/RX2535431



Graham McIntyre
027 632 0421

graham.mcintyre@mikepero.com



NEAR NEW - DECEPTIVELY LARGE IN HOBSONVILLE

4 1 2

By Negotiation

18 Pottery Crescent, Hobsonville **By Negotiation**

Absolute corner site enjoying easy access and outstanding sunshine. This is a home that has been created out of a neutral colour pallet, clean design with an eye to convenient entertainers living. Set on 208 square meters and staged over two levels, this impressive 180sqm home delivers street appeal while an access lane delivers easy parking options. Open plan entertainers kitchen, dining and lounge opening onto north facing patio with clever planting and privacy screening. Single garage, laundry, storage and guest toilet completes the lower level. Upstairs has four generous bedrooms and two bathrooms off a central hallway. Centrally located in Hobsonville with a short stroll to shopping, restaurants, cafes, park and transport links while a short drive has you straight onto the Motorway.

www.mikepero.com/RX2535432



Graham McIntyre
027 632 0421

graham.mcintyre@mikepero.com



LAND - RV \$550,000 - NO COVENANTS - VIEWS

\$575,000

56E Kaipara Coast Highway, Helensville Asking Price \$575,000

A truly stunning 1.6 hectare lifestyle block offering a serviced flat building platform and outstanding views to the North West. It delivers a site that is perfect for an entertainers home with extended views and privacy. The site has easy and established driveway access and title is issued and ready. In addition to the two grassed paddocks the land has a small covenanted native bush area that supports extensive bird life and privacy. Grazing is suitable for small hoofed animals (sheep, goats, alpacas) and offers good planting options to ensure you get the most out of this amazing block. Motivated Vendor is happy to look at an extended settlement. Close to Helensville convenience shopping, schools, transport links and inner harbour access.



Graham McIntyre
027 632 0421

graham.mcintyre@mikepero.com

www.mikepero.com/RX2366714

Mike Pero Real Estate Ltd. Licensed REAA (2008)

www.mikepero.com



5 ACRES - MIXED ORCHARD WITH NATURAL SPRING

5 8 3

\$1,349,000

275A Rimmer Road, Helensville Asking Price \$1,349,000

If you are seeking a good life, a mix of fresh greens and fresh fruits then you're starting with the right property. A five bedroom, three bathrooms, two lounge brick and tile home offering generous space with flow to north facing patio and grassed glade. A suntrap that is only in need of the homely touches and the desire to invite friends and family to enjoy. Up to eight car garaging, extensive shedding and strong room, the property has all the structure for a lifestyle buyer that wants to grow and plant and forage. A large variety of fruit bearing trees are in place while an additional paddock is ready to be planted or fenced for grazing. A natural spring feeds water to the property. A short drive to Helensville and Parakai for convenience shopping, inner harbour access and transport links.



Graham McIntyre
027 632 0421

graham.mcintyre@mikepero.com

www.mikepero.com/RX2529830

Mike Pero Real Estate Ltd. Licensed REAA (2008)

www.mikepero.com



4 HECTARES - TRANQUIL DOWNS - TAUPAKI

5 2 3

\$2,500,000

369 Waitakere Road, Taupaki
Asking Price \$2,500,000

Country Living zoned and an absolutely beautifully presented home with options for equestrian adventures or extended lease options to the incumbent Red Hills Pony Club. The land is well contoured into home life with established gardens, enclosed pool, sheds, extended carport and peppered with native plantings it is a private, tranquil and gated estate. Five generous rooms with three bathrooms, large formal lounge and options for two lounges, study and more. For a large family looking for the good life or an extended family looking for space this is a home with traditional values, peace and tranquillity in spades and has flexibility in how it is lived in. Make space in your diary for space in your life for this incredible property, so close to everything and so calm and quiet.

www.mikepero.com/RX2510060



Graham McIntyre
027 632 0421

graham.mcintyre@mikepero.com

Mike Pero Real Estate Ltd. Licensed REAA (2008)

www.mikepero.com



10 ACRES - ELEVATED BRICK AND TILE

5 4 3

By Negotiation

1132 Peak Road, Helensville
By Negotiation

First time on the market in 30 years, is this north facing brick and tile home, elevated with valley views. Offering a generous open plan living environment with central hallway to three rooms and linking to a self-sufficient guest wing. A collection of sheds and out-buildings including workers accommodation on the property allows for diversity for use and ample scope for storage. Fenced into six grazing paddocks with its own water supply and decorative ponds the paddocks have an easy care gravity irrigation system to the trough's. If you are seeking a family home with options for extended family of guests, this is a home you will want to view. Certainly a home that you be an active relaxer or a relaxer that is active. A short drive to convenience shopping in Waimauku and Helensville.

www.mikepero.com/RX2531138



Graham McIntyre
027 632 0421

graham.mcintyre@mikepero.com

Mike Pero Real Estate Ltd. Licensed REAA (2008)

www.mikepero.com

Home & Garden

Laser Plumbing and Roofing Whenuapai

Laser Whenuapai is your local one stop shop for all plumbing, roofing and drainage needs!

Maintenance Plumbing for all your plumbing requirements, from basic tap washers, leaking pipes, the dreaded blocked toilets, or gas work, our maintenance plumbers are here to help - 24 hours a day.



Drainage - our qualified drainlayers can perform a full range of drainage repairs and replacements through to new drainage jobs - both storm water and wastewater. We offer a state-of-the-art drain unblocking service, CCTV inspection service and a dedicated tip truck and digger to get the drainage work done.

Roofing - We find and fix roof leaks. We also offer all roofing services...from repairs and gutter cleans right through to full re-roofs.

Project Plumbing -We are specialists in new home plumbing, design and installation as well as home renovations. We also have extensive knowledge and experience in commercial plumbing. Contact us today and we will help manage your project.

Laser Whenuapai has been trading since 1985 - so choosing us means choosing a solid, reliable and experienced company that you can depend on. Not only can we offer you total solutions for all your plumbing, drainage or roofing needs, we stand by all our jobs by offering warranties...and always use quality New Zealand made products.

Get in touch with us today on 09 417 0110 or whenuapai@laserplumbing.co.nz. We are open five days a week from 7am-

4:30pm and are conveniently located at Unit 4, 3 Northside Drive, Whenuapai.

Subtropical garden

With the recent spring weather we have been having and summer to come, it is a great time to consider the favourite of many gardeners, the subtropical garden. The warmth and humidity can produce astonishing growth rates which can appease even the most impatient gardener.



At Awa Nursery, we have many plants which are tailor made for the subtropical garden, flowering spectacularly for that lush shiny foliage. Vireya rhododendrons are in stock which grow superbly in the subtropical garden, brightening up your garden with the long flowering period. So many colours and flowering intermittently throughout the year, these are a firm favourite. Cannas are now back in stock with their bold foliage and exotic flowers making a big splash with very little effort.

Consider the new Ligularia Rukuhia Beauty with its smaller growth habit to that of the Tractor Seat or the strappy Clivia with that splash of orange. Bromeliads look fantastic in the tropical garden. Add palms, Iresine, Aucuba, Strelitzia, Heuchera to mention a few to complete the picture. There are plenty of choices for those wishing to add to their existing subtropical themed garden or starting afresh. Remember it's a good time to mulch your garden in preparation for the dry summer months. Take the plunge and come and visit Awa Nursery for ideas and inspiration. Phone Awa Nursery: 09 411 8712, email info@awanursery.co.nz or visit www.awanursery.co.nz.

Flower arranging - Christmas theme

Sunday 6th December 0930 - 1130am.

Have you ever wanted to create your own Christmas wreath or a beautiful table setting for that special lunch or dinner but not sure where to start or how to go about it? Then this two hour workshop will be ideal to get you on your way (as well as impress family and friends).

Bea Stumple, an expert local florist, will again be presenting this event which was extremely popular and well received when we ran it in 2019.

Ever had mess
left behind?



**No mess, no dodgy products &
no run around. We guarantee it.**

Ph: 09 417 0110

**Roofing | Plumbing | Drainage | Gas fitting
Drain Un-blocking | 24 Hr Service**



"Totally Dependable"

**Laser Plumbing
Whenuapai**

whenuapai@laserplumbing.co.nz

www.whenuapai.laserplumbing.co.nz

**We've seen you right
for over 40 years**

**Western ITM
Locals Supporting Locals**

WESTERN

WHENUAPAI | KUMEU | SWANSON

www.westernitm.co.nz

Home & Garden

Bea qualified was the top student in NZ when she completed her NZ Professional Floristry examinations 26 years ago and is one of only 16 people to have received the Ethel Black Award (a top accolade in the floristry world). She is also a registered examiner and accomplished tutor - so Bea knows her stuff.

She plans to stroll around the gardens with attendees selecting appropriate plants and flowers and then show you how to arrange them to best effect.

In this interactive workshop Bea will be explaining: Appropriate plants and flowers that work well together. Various arrangement techniques and concepts. How to make your creations last longer. Tools and materials required.

After the workshop maybe spend more time in the gardens which has a beautiful 1.2Km nature trail meandering through the idyllic Kaipara countryside.*

There is also a kid's play area as well as our cute little coffee shop on site plus of course the Plant Centre for you to browse through.

Our knowledgeable and friendly staff will also be on hand to help with any garden related questions.

* Trail not suitable for wheelchairs or walking frames.

1481 Kaipara Coast Highway (SH16), 4km north of Kaukapakapa, Tickets \$15 per person, To Book email info@kaiparacoast.co.nz or phone 09 420 5655.

We're all grow at Kumeu Gardens

Spring has come at a perfect time for the new Kumeu Community Gardens on Oraha Road. A lease has just been granted from Auckland Council, and we can now legally occupy the flat, sunny site, ready to grow.

Our vision is for community participation in local food forests, encouraging the skills of food growing, the love of flowers, resilience, sustainability and a circular economy where there's no food waste, and abundance of healthy locally grown food.

Now we have our lease, we are ready to properly establish the site, with a water tank donated by the Council, and soil for our no-dig garden beds from Wyatt Landscape supplies in Waimauku. We still need more soil, plants, tools, a garden shed, and volunteer help from keen gardeners.

To get involved please follow Kumeu Community Gardens on Facebook, and watch out for a coming open day to join in the fun.

Tile Wright

Tile Wright specialises in all things tiling; we provide high quality services including Auckland Council approved water proofing, bathrooms, kitchens and splash backs.

With over 5 years' experience in the industry, we pride ourselves on high quality workmanship.

We cover most of Auckland, have competitive prices and offer a workmanship warranty on all work. Wanting to give your kitchen or bathroom a new lease of life? No job too small, we cover it all. Call us today on 027 260 8225 for a free no-obligation quote.



Your lifestyle property supplies specialist

For farm fencing supplies we are your one stop shop... post and Rail, wire and batten, our store has everything you need - including quality hardware and fixings to get your farm fence built.

For temporary fencing, we stock the Gallagher portable electric



0800 638 254 www.wyatts.net.nz

OPEN 7 DAYS

Growing summer veg? Let us help

Grandad's garden mix • Compost • Topsoil • General fertiliser
• Sheep pellets • Blood & Bone and everything in between

948 State Highway 16, Waimauku • Call 09 411 9604 • www.wyatts.net.nz

Making your place a green space

Home & Garden

fencing systems and Strainrite fencing tools and accessories. We also carry RXP Stock Water Troughs (round/rectangular for domestic or commercial use) and the complete range of low-density polyethylene pipe and fittings. Stock gates are also available in metal or wooden 5 bar and cap in an assortment of lengths. And for those of you with barns/stables we also have Purepine Dust Free Shavings - (sold per bale) readily available.

Do you have a project or plans you would like priced? Then contact our experienced sales team today. Email: kumeu@westernitm.co.nz or phone 09 412 8148.

Christmas Trading... It has been a long hard year and we recognise that our staff, their families and friends all deserve a good break. This year our last trading day will be Thursday 24th December 2020 and we will re-open again on Tuesday 5th January 2021.

Western ITM. Locals Supporting Locals. 3 Auckland Stores - Open Mon-Sat. Whenuapai | Kumeu | Swanson. www.westernitm.co.nz.

Jims Mowing

Last months' article was about getting your lawn ready for the flush and preparing it for maximum enjoyment over the summer. This month - coping with the extreme growth.

Usually something is limiting the growth - maybe it's the amount of sunlight, or water, or the temperature, or nutrients. Over winter its cooler and the days are shorter, there are more cloudy/rainy days and on the days there is sun it is less intense. One or more of these factors is restricting the growth rate of the plant.

Right now conditions are near perfect for plant growth - those gentle breezes bringing warmth from the north, the days are long and sunny, the suns angle in the sky is higher making the energy more intense - and we have had rain (at last) so the soil is moist. After last months' article you will have fed your plants so there is no

nutrient limit either.

These perfect conditions mean the lawn is growing like crazy, you can almost see it getting longer each day. What to do? The answer is to mow frequently.

Kiwis typically like a low compact turf that is quite dense for general use like that game of backyard cricket. For these its best to mow frequently and keep lowering your mower height to get the growth habit of the grass lower, thicker and tighter. This doesn't mean scalp to dirt level once a month or mow below the height of the grass blade cutting the brown stalky part - that damages the grass and leaves bare patches for weeds to colonise - but a quick weekly mow or even more frequently cutting off the top of the grass blade and allowing the grass to slowly adapt before the next mow.

For those who prefer lush lawns the answer is very similar - frequent mowing - cutting roughly the top third off the grass blade. In this case you will set your mower higher. The longer grass does tend to grow faster, so mows may need to be even more frequent.

Always check your mower blades are sharp and the mower deck is clean to get the best results. It takes ongoing effort but the results will be worth it. Giving you that beautiful lawn you want.

Give Jim's Mowing a call 0800 454 654 or book online at JimsMowing.co.nz.

Waimauku Garden Club

Isn't it beautiful to see the grapevines and the roses as you come into Kumeu?

A group of us were able to attend a wine tasting and tour of Brakovich's Kumeu River on the 15 October. We enjoyed a small tasting and learnt that each wine had its own story.

It's quite extensive, set back from the roadside frontage.

It was just wonderful to see the wine barrels neatly in rows, everything spic and span. A sight worth seeing.

From here we drove across to Westbrook where we were served a beautiful platter lunch and a much needed catch-up while looking over the vineyard and trees in their spring splendour.

Our November 19 trip is out to visit two gardens Windsford and Addenbrooke in the area of Ramarama and Karaka.

We lunch there followed by a tour of the garden. I'll tell you all about our visit next month.

December 17 we have our Christmas lunch at The Brigham at Whenuapai. February we are planning to go out to Clevedon.

Contacts: Ann 021 035 7406 Bette 021 145 1854 Diana 027 478



sustainable
LANDSCAPES



rock retainer walls | entranceways | ground shaping & digger work

Dave Milina

E: info@sustainablelandscapes.co.nz

M: 0275 196 219 | O: 09 414 4503

www.sustainablelandscapes.co.nz



Home & Garden

8928 Donna 021 233 0974 Judith 027 272 9994 Moira 027 498 9154 Veronica 027 755 4645.

Solarcraft - solar generators – off the grid, on the go...

With solar generators, you can have power, wherever you go. These Gateway Liberty 1500W solar generators were originally designed by the military in U.S.A. so they have been built nice and hardy to withstand all conditions.



The strong aluminium case and sturdy carry handles make it light (at 20.5kg) and easy to lift and transport. You can run your tools onsite, take one camping, cover your essentials in a powercut and, with four USB outlets, plug in your laptop and charge phones.

There are also specially designed panels that fold up, with a handle, for extra-portability too. You could also hook this up to fixed solar panels on a roof instead. Like a garden shed or sleepout.

For example, with one 3 hour charge, you can power up; a 100W fridge / freezer for 18 hours, a 60W laptop for 12 hours, 18W LED lighting for up to 40 hours.

For more info? Visit www.solarcraft.co.nz/services/gateway-solar-generators or contact us ANY time with ANY solar questions. PH: 0508 272 389 info@solarcraft.co.nz.

Muriwai tide chart

Date	High	Low	High	Low	High
Tue 01 Dec	-	05:26	11:28	17:47	23:37
Wed 02 Dec	-	06:02	12:03	18:24	-
Thu 03 Dec	00:14	06:39	12:38	19:03	-
Fri 04 Dec	00:53	07:17	13:16	19:43	-
Sat 05 Dec	01:34	07:58	13:58	20:28	-
Sun 06 Dec	02:20	08:43	14:45	21:18	-
Mon 07 Dec	03:11	09:33	15:39	22:14	-
Tue 08 Dec	04:11	10:32	16:41	23:16	-
Wed 09 Dec	05:16	11:38	17:46	-	-

Thu 10 Dec	-	00:20	06:23	12:47	18:50
Fri 11 Dec	-	01:24	07:29	13:53	19:54
Sat 12 Dec	-	02:25	08:32	14:55	20:54
Sun 13 Dec	-	03:23	09:30	15:52	21:51
Mon 14 Dec	-	04:17	10:24	16:45	22:44
Tue 15 Dec	-	05:07	11:14	17:34	23:34
Wed 16 Dec	-	05:55	12:01	18:21	-
Thu 17 Dec	00:22	06:40	12:46	19:07	-
Fri 18 Dec	01:07	07:25	13:29	19:53	-
Sat 19 Dec	01:52	08:08	14:13	20:39	-
Sun 20 Dec	02:38	08:53	14:58	21:27	-
Mon 21 Dec	03:26	09:40	15:47	22:18	-
Tue 22 Dec	04:19	10:32	16:41	23:12	-
Wed 23 Dec	05:17	11:32	17:37	-	-
Thu 24 Dec	-	00:09	06:17	12:35	18:35
Fri 25 Dec	-	01:07	07:17	13:37	19:31
Sat 26 Dec	-	02:03	08:14	14:33	20:24
Sun 27 Dec	-	02:54	09:05	15:22	21:14
Mon 28 Dec	-	03:40	09:50	16:07	21:58
Tue 29 Dec	-	04:23	10:30	16:48	22:41
Wed 30 Dec	-	05:03	11:09	17:28	23:22
Thu 31 Dec	-	05:43	11:47	18:08	-

Source: LINZ.

Moth plant

Pest plants, such as moth plant, are invading Auckland's suburbs – your gardens and your nearby bush reserves. Controlling them when they are small is easy and cheap. If they are left to grow, they can spread across your property onto your neighbours' gardens and to nearby reserves.

Moth plant is a particularly nasty pest plant as it spreads so quickly and smothers our native bush. It is poisonous to people (and traps Monarch butterflies!) and its sap can irritate our skin.

From January, the vines form bell-shaped creamy coloured flowers, occasionally with pink streaks. Over the next few months, these flowers turn into large, green, pear-shaped pods. If left, each pod will release thousands of fluffy parachute seeds into the air infesting more and more of our gardens, parks and bush. Please contact either Living Whenuapai if you would like any further information on how to get rid of moth plant or if you wish to be involved in native restoration projects or predator control throughout the North West area: committee@livingwhenuapai.org.nz or through our Facebook page: [Facebook.com/livingwhenuapai](https://www.facebook.com/livingwhenuapai).



JET HOME

Sewage Treatment Plant

Sewage Treatment Systems
Concrete or Fibreglass Tanks
Full Installation & Servicing
Council Approved
Drainlaying & Excavation
Water Tanks, Pumps, Filters

Ph 09 415 1538 email info@jetwaste.co.nz

HEALTHY WATER SOLUTIONS

Improving your water quality

- WATER TANK CLEANING - full & empty tanks
- WATER TANK REPAIRS & RESURFACING
- WATER PUMP SERVICE & SALES
- FILTRATION FOR TANKS & HOUSE SUPPLY



Ph: 021 420 936

joe.hall@healthywatersolutions.co.nz

www.healthywatersolutions.co.nz

Build New

How to create the ultimate outdoor space

When it comes to designing your dream home the outdoor space can often get overlooked, that's why many of our plans include outdoor living that can be adapted and maximised to suit your lifestyle. By turning the space into an outdoor room, your house has a larger footprint and you have the potential to increase the value of your home, not to mention the fun there is to be had by the whole family.



The concept of outdoor cooking has come a long way from a few snags on the barbie as fully outdoor pizza ovens and fully appointed kitchens become very popular. But you need not break the bank to create the dream outdoor space for your family.

Here are some smart tips to help you get started:

Create zones

- Be deliberate in your layout, how will you use the space? Will be you be eating meals as a family, chilling out with friends, entertaining children
- Define your space then add privacy with screens, trellis, or even planter boxes

- A pergola creates a great focal point which can be softened using climbing plants

Make it functional

- How will you reach the space from your house? It needs to be easily accessible with a tray full of food and drinks
- What is the orientation of the sun?
- Is there already shelter in place?
- Outdoor furniture is one of the biggest investments, make sure it fits the area well without being too cluttered

Cover it up

- NZ's weather can be fickle so try and plan for all weather conditions
- A shade sail is a great temporary option, otherwise, clear roofing is cost-effective, easy to install, and, most importantly, will give you cover without blocking out the sun
- You could consider extending your roofline across the deck if you are building, this will create a seamless flow and bifold doors will make the space an extension of your indoor living

Keep it cosy

- Electric radiant and gas bottle heaters are a cost-effective way to keep warm year-round
- If you have space an outdoor fire, brazier, or fire pit will keep you toasty when the sun dips plus it will add a great focal point
- Clear slides might be a good option to shelter you from any prevailing winds
- Don't forget to have cosy blankets on hand

House & Land Packages



Country Living, Turn Key!

\$1,165,000

House 181m² | Section 629m²

3 | 2 | 1 | 1 | 2



Wood Valley Wonderland!

\$1,185,000

House 186m² | Section 18510m²

3 | 2.5 | 2 | 2



Tick The Boxes In Huapai

\$890,000

House 144m² | Section 357m²

3 | 2 | 1 | 1



Architectural Kiwitahi Haven

Price By Negotiation

House 207m² | Section 297070m²

4 | 2.5 | 1 | 2

[View more House & Land Packages at signature.co.nz](https://signature.co.nz)

Contact Dean Pritchard for more information

027 471 1886 | 0800 020 600 | deanpritchard@signature.co.nz

Signature
HOMES
YOUR HOME. YOUR WAY.

Build New

Shine the light

- Add ambience with outdoor lighting, there are many options to choose from depending on the atmosphere you want to create. Festoon lights are right on trend and will add a different dimension to your space once the sun goes down

Plants, plants, plants

- The most cost-effective way to add life to your outdoor space is with greenery
- Choose plants that suit your climate in various sizes to create atmosphere, shelter, and privacy

Call our team at Signature Homes West Auckland to discuss your options; obligation free 0800 020 600 www.signature.co.nz/west

Why choose G.J.'s

At G.J. Gardner Homes Rodney West, we promise to make your new home building experience a pleasure. Your only surprises will be happy ones.

Your G.J. Gardner Homes franchise is an independent, locally owned and operated business, making them part of your community and providing you with direct access to the owner of the business responsible for building your home.

Our dedicated team take care of everything, including permits, resource consents, planning issues, engineering drainage and geotechnical reports.

We can even help you find a section or unique lifestyle property,

sort out finance and payment terms to make it as simple as possible.

To provide peace of mind, a fixed price contract is offered at the start of the build journey with all prices locked in ensuring there are no surprises, allowing you to move forward in confidence with the certainty of no price changes.

Have an idea on paper but not sure where to start? Our New Home Consultants and onsite Architects can turn your sketch into reality and have it priced all in the space of a very short timeframe. Our designers have consistently been at the forefront of developing living concepts that cater for modern lifestyles and New Zealand's unique environment.

We project manage everything every step of the way and give you written assurances, regarding costs, workmanship, material guarantees, completion dates and other key issues.

Our thoroughness is just one of many reasons why year after year, more people build with G.J. Gardner Homes than any other builder.

So give the team at G.J.'s Rodney West a call today on 09 412 5371, they can't wait to start your exciting build journey.

\$85 = Exposure for a month

Budgets are tight and advertising is often expensive, but it's nice to know that someone is making it easy and cost effective. For \$85 plus GST you can be exposed to over 20,000 locals for a whole month. That is only \$2.80 a day. For more information email our editor at editorial@kumeucourier.co.nz.

**MAKE THE
WISE CHOICE.
CHOOSE NZ'S
MOST TRUSTED
HOME BUILDER.**

Talk to your local team to find out why more New Zealand's trust G.J. Gardner to build their homes than any other builder.



09 412 5317
gjgardner.co.nz



G.J. Gardner. HOMES

Central's Tips

December 2020



The holiday season is here and it's time to spend some time in your backyard - tidy up the outdoors, get the BBQ ready and plant some Christmas colour. Make sure to mulch to help your plants through the hot summer months.

Protect your berries

Make sure your blueberries, raspberries and strawberries are protected by covering them with bird netting. Place straw around the plants to stop strawberries rotting on wet soil



In the Edible Garden

- **Watering is at an important phase now**, to keep plants growing and producing. Apply Somerset pea straw around all fruit and vegetables to help water storage and discourage weeds
- **Bird netting** should be used for covering ripening strawberries, raspberries and blueberries
- An early growing season has meant **green looper caterpillars** are targeting soft lettuce leaves and tomato foliage. Control with a natural remedy, preferably when bees aren't around - early or late in the day
- **Leeks can be planted now**. Separate them out, cut the green end by half and drop into holes about 5cm deep. Don't fill in with soil - let them grow on and gradually soil will surround them
- **Lettuces and herbs** that have 'bolted' and gone to seed may be doing a service in the vegetable patch - their flowers will attract bees and other beneficial insects, so if you're not averse to the 'wild' look leave them in situ

The rest of the Garden

- **Pot up red flowering petunias**, impatiens and geraniums for a Christmas theme. The soft silver foliage of 'Dusty Miller' or helichrysum in the pots really sets off the festive look
- **Mulching is a key garden activity before Christmas** - weed, water and layer mulch around all your plants now. The benefits are big: your garden will look wonderful, it can get by on less water and the plants have room to grow - the weeds don't
- **Xerophytic gardens** contain plants that simply do not require watering. Interesting succulents and cacti, structural NZ plants (think Poor Knight's Lily, astelias) will work for this style of gardening. It's important to have a garden that drains well or use a mix with plenty of sand when planting into pots
- **Liquid feed** any plants that are newly planted, potted plants or anything that is struggling to grow with Aquaticus Garden Booster. If you're heading on holiday shift pots into light shade or apply a layer of mulch to help them cope without water



Project for December

Weedkilling without chemicals

While a weed may be just 'a plant in the wrong place' pre-Christmas is when they really establish. The return from holidays can be marred by an unrecognisable garden, where the 'wrong plants' have taken hold.

This is a great time to choose a still, fine morning and apply a herbicide to the plants you don't want. Green Demon, our chemical-free weedkiller will help knock them back, using a fatty acid blend that breaks down their cell walls and stops them growing. Remember to only apply spray to the plants you don't want

For great gardening tips, visit www.centrallandscapes.co.nz





OUR HOLIDAY HOURS ARE:

CLOSED 24 - 27 December

OPEN 28 - 30 December 7am - 5pm

CLOSED 31 - 3 January

Back to normal from 4 January



We dig your support.

Wishing you peace and happiness in your patch of paradise. Thank you for supporting us during this difficult year.

If you're gardening or landscaping between Christmas and New Year, do come and see us.



Central Landscape Supplies Swanson

09 833 4093 • swanson@centrallandscapes.co.nz

www.centrallandscapes.co.nz • 598 Swanson Road, Swanson

Pets

Christmas gift for pet owners

The jolly season is just around the corner and with it comes the panic of thinking of new ways to celebrate our loved ones with something special.

Well I've got the perfect gift for you to get Christmas sorted early. I offer gift vouchers for pet and family photography sessions.



Whether you know someone who is crazy about their pet, or someone who needs to update their family portraits, a professional photo shoot is the perfect gift.

Using the beautiful locations we have around Auckland as well as my studio, I'm passionate about creating vibrant photographic art of your pets as well as the bond you share with them.

Check out my website for more information on package options and to purchase online.

Vouchers can either be emailed directly to you as a print-out if you need it in a pinch, or I can post you a physical gift card at no extra cost. Christmas is sorted. www.dogandco.nz/gift-vouchers.

Warning on karaka berries and their seeds

Karaka trees (*Corynocarpus laevigatus*) are native to New Zealand and are prevalent in many parks and forest areas, including Hobsonville Point. The berry kernels, however, contain virulent poisons that are yet to be fully described in terms of their individual effects on dogs and humans.

Most warnings online will show only photos of the berries, brightly coloured and hard to miss. In reality, it is hardly ever these bright yellow/orange/green berries (labelled 1 and 2) that you will see on the ground, but the rotting or decaying outer husks (labelled 3 and 4). These can sometimes be partially covered in some remaining orange flesh, but more often than not they look very dry and seemingly dead.



The powerful neurotoxins are in fact contained in the inner kernel/seed, shown here (label 5) inside the soft outer husk, and at label 6, removed from the husk. Even when the outer husks seem dry and old, the toxin will still remain strong. The outer husk is very thin and can easily be chewed through by a small dog.

If your dog ingests ANY part of a karaka berry, fleshy fruit, husk or seed, take them to a veterinarian immediately and without delay. If taken soon enough, the dog can be made to vomit and hopefully the effects reduced.

Hopefully these images will help dog owners to identify the husks on the ground, as well as the fleshy fruit that most people associate with toxicity. Lauren Prior, lecturer at the School of Environmental and Animal Sciences at Unitec.

Cat lovers urgently needed

Volunteers required to help with cleaning duties etc. at a cat rescue shelter in Huapai. Can you spare two or three hours once a week?

Also loving homes needed for some of the friendly rescue cats.

Donations appreciated at www.thenzcatfoundation.org.nz. Phone 09 412 2636 or 021 929 999 for further information.



Pup Runner

Pup Runner in Hobsonville Point will take your dog on an adventure that is catered to you and your best friend's needs.

Walks include time for sprinting and running to burn all that pent-up energy, time for sniffing and socialising at the local dog park (subject to your choice of timeframe), and the bonus of ongoing training.

Lea (Pup Runner founder) is crazy about dogs, to the point that her family and friends feel a teeny bit left out. She understands how difficult it can be when those heart-melting puppy eyes are begging






NOW OPEN
PH 09 416 0003
gymzone.co.nz

4 WORKSPACE DRIVE, HOBSONVILLE

Gymnastics • Parkour • Tumbling & Trampoline
Preschool • Holiday Programmes • Free-Play
School Programmes • Birthday Parties

where movement begins



ALL AGES



Contact Us: **09 420 8998**
swimschool@parakaissprings.co.nz

Pets

for an excursion, but you're just too tired and busy to take him out... and he tugs so much, and the stroller, and the time...we get it, you feel terrible, and really wish that you could give your pup what he deserves. Feel bad no more. Pup Runner will make sure your pup comes back lazy and ready to cuddle (or hey, if you have to go away for more than a while, Lea will make sure your pup won't be sulking in a corner when you come home).

Check out her website www.puprunner.wordpress.com to get more info, book a walk or pup sitting session.

Dog and cat grooming

This is a family pet grooming business which was established in 2013 by Kristina and Alena. Kristal Pet Grooming is a full service grooming salon located in Hobsonville. We welcome cats, dogs and other pets. We range from tidy-ups to full grooms and even provide dog show grooms. Our groomers bring more than 15 years of experience while providing compassion, patience, and safety to your pet. We do everything we can to create a positive, and happy, stress-free environment. Our groomers have the knowledge and skills of animal handling, if your pet is afraid or it is their first



time - do not worry, cosy atmosphere and the caring hands will calm your pet. Our goal is to ensure that every pet and pet-parent leaves us with the feeling of having experienced an outstanding level of customer service and the highest possible level of care. Find us at 6 Rawiri Place, Hobsonville, 0210 253 8286, kristalpetgrooming.co.nz and on Facebook.

Kanika Park Cat Retreat

Welcome to Kanika Park Cat Retreat, a boutique country retreat for cats. Run by a family of passionate animal lovers, nestled in the heart of our 10 acre Waimauku property.



Kanika Park Cat Retreat is a cattery like no other, where you can treat your cat to a relaxing holiday in one of our spacious private suites.

It is our mission not only to provide each guest with a personalised, warm and fun place to enjoy, but also to allow owners to be comfortable in the knowledge that their fur babies are safe in a loving and caring environment.

For further information please contact us - Phone 09 411 5326 or email info@kanikapark.nz.

LIST WITH US & WE COULD SAVE YOU THOUSANDS...

- Lower fees, 2.95%* up to \$490,000
- Superior marketing with a FREE TV AND MAGAZINE advertisement
- Clear and consistent communication

Graham McIntyre

027 632 0421

graham.mcintyre@mikepero.com

mike Pero | REAL ESTATE

Mike Pero Real Estate Ltd Licensed REAA (2008)
*Our fees are 2.95% up to \$490,000 thereafter 1.95% + admin fee + gst.



Food & Beverage

Westbrook Winery

Things are heating up for summer at Westbrook Winery. Small but perfectly formed bunches of grapes hint at delicious wines to come. The Cellar Door team are enjoying hosting groups of all sizes, from small local business staff Christmas lunches to private family celebrations. The kitchen is cranking out wine-matched platters, cheeseboards, and pizzas, which complement our wine beautifully. We love to share our story and award-winning wines with guests. Even four-legged furry visitors are welcome as long as they are well-behaved. With twenty acres of park-like grounds to enjoy, there is plenty of space for wine-lovers to relax while also complying with social distancing requirements. Bookings are highly recommended at any time and essential for groups of four or more. Book now via the website www.westbrook.co.nz/book-now or call the friendly Cellar Door team for assistance on 09 411 9924.



Allely Estate Greek night a huge success

Covid really threw a spanner in the works for our season of weddings - obviously we couldn't hold any during lockdown or during the levels that restricted guest numbers but then we also had couples postponing due to the closed borders and not being able to have their overseas guests with them for their special day.



So we got creative... and we're so pleased we did.

During Labour Weekend, we held our first-ever Greek night - and what a fun night it was, with belly dancers, a DJ, a traditional band and amazing authentic Greek food. Our outdoor marquee was themed with ivy draped all over the ceiling and Greek statues scattered about - it was a real Athens at Allely vibe.

We were heartened to see so many locals turn up to support our

event - over 180 people joined us and, from the feedback we're still getting, they had a wonderful time.

We'll look to do another one soon, but we're also investigating other ideas to get our community together - fundraisers, quiz nights, an Irish night... Watch this space! www.allelyestate.co.nz.

Local brewers collaborate

Introducing Hallertau + Muriwai Brewing Co. Muriwai Pilsner.



Hallertau Riverhead is proud to announce a great local collaboration with new nano-brewers on the block, Muriwai Brewing Co. Established in 2018 Muriwai Brewing Co is your classic three blokes in a shed operation who between them have been producing some pretty good beer. Messieurs Healy, Mullins & Goldie have joined forces with Hallertau's Captain of Beer, Steve Plowman for their first commercial release. Weighing in at 4.1% Muriwai Pilsner is a refreshingly dry, sessionable summer beer with a fruit salad of flavours. The perfect partner to any gathering, large or small. As we like to say around these parts, "enjoy cold and often!" Pouring now at Hallertau and other local venues.

Soljans Winery Café

Soljans Winery Café is a popular venue for Aucklanders and visitors from around the world. We serve Mediterranean-style food with a Kiwi twist. Our menu changes from summer to winter, allowing our chefs to showcase local fresh produce. Our new summer menu begins this Friday. With some old favourites, and some exciting new dishes to try out.



Soljans is one of Auckland's Top 40 Restaurants as chosen by The New Zealand Herald and also one of Canadian Wine Access Magazines Top 20 Winery Restaurants in the World. Our Chefs have been awarded the New Zealand Beef & Lamb Hallmark of Excellence since 1995 and to top it all off, our café was awarded the Certificate of Excellence by TripAdvisor.

We welcome everyone here at Soljans. We have a children's menu

Come and check out our new
Delicatessen, Coffee, Juice & Ice Cream Bar

BORIĆ Food Market

1404 Coatesville - Riverhead Highway, Auckland
www.boricfoodmarket.co.nz

Kumeu Produce Market

Produce Retail & Wholesale Specialist

p. (09) 412 9998
f. (09) 412 9398
407 State Highway 16 Kumeu
PO Box 104100 Lincoln North

Food & Beverage

available for kids, as well as a fantastic outdoor area with a playhouse and a grass field for the little ones. We also have Wi-Fi, so you can show off your wonderful experience, #soljansestate so we can see too.

www.soljans.co.nz or call us on 09 412 5858.

Rainbow Whisk

As we near Christmas, there is plenty going on down at the Hobsonville Marina. Come and see what is going on, try our new menu and drinks. We have daily specials to check out and with Christmas getting closer, this will only increase. Also, get your kids involved with our 12 days of Christmas and follow our elf around Auckland on our Facebook page (facebook.com/therainbowwhisknz). Are you having a Christmas lunch before you close up for the year? Let us cater for you, check out www.therainbowwhisk.co.nz/catering for more details. Free delivery with a minimum order. See you there.



Wen and Yen

Let's start the story with the two of us girls daydreaming about owning our own dessert store. Wendy who studied Food Science at the University of Auckland and was working for Frucor Suntory in the Quality Team. Li-Yen who was studying Patisserie at AUT loved to bake and was working part time in other cafes in Auckland. On Christmas Day in 2017 we decided to sit down and put our dream down on to paper. After numerous planning sessions, delicious research trips to cafes and bakeries, hundreds and thousands of recipe trialing, productive team meetings at bars, Wen and Yen was born. We started doing markets around Auckland where we would bake all night and day and then go and sell at the markets after work/school and on the weekends. Six months later we decided to go all in with Wen and Yen, so off we both went to quit our jobs, gather all our savings and opened our bakery in October 2018.



At Wen and Yen we pride ourselves on our handcrafted baked goods. Everything we sell at our shop is all handmade by us with love. Our doughnuts are the star of the show - made fresh every day, hand rolled and filled with our own house-made toppings. Our ability to innovate has allowed us to create one of the best gluten free and vegan doughnuts in town. The popularity of these doughnuts motivated us to expand our gluten free and vegan range allowing us to now stock gluten free tarts, meat pies, pizza, fruit tarts and brownies. When Covid hit, we launched our online store (wenandyen.com) and to this day we still offer instore pick-ups and deliveries all over Auckland. We deliver to West Auckland on Sundays, as far south as Henderson and out west as far as Ranui. Beyond making yummy food, our store has created a fun place for locals to come to for their daily coffee, taste new food, and to just have a good yarn. We love how our store has created so much joy for not just us but everyone around us and we hope to keep spreading this happiness through our food. Catch us at markets around Auckland - see our website wenandyen.com and on Facebook.

Peko Peko

Very excited to let you all know that we are finally fully licensed. It is the perfect timing for the festive season. We have Japanese beers, sake and some spirits as well as New Zealand wines. We are also happy to do catering on your request, some new additions to our menu, and lots of exciting things ahead. Please check our Facebook and Instagram page for the newest update. 2020 was really the hard year for everyone but we are so grateful for your continuous support. Hope everyone will have a safe and happy festive season and look forward to seeing you all here. Located 102C Hobsonville Rd. 09 416 1197.



\$85 = Exposure for a month

Budgets are tight and advertising is often expensive, but it's nice to know that someone is making it easy and cost effective. For \$85 plus GST you can be exposed to over 20,000 locals for a whole month. That is only \$2.80 a day. For more information email our editor at editorial@kumeucourier.co.nz.



FreshChoice Waimauku
A-2 Waimauku Retail Centre
5-19 Factory Road
Waimauku, Auckland
Phone: (09) 411 7890/411 9495
Fax: (09) 411 8050
Mobile: 021 048 3355
Email: waimauku.fc@xtra.co.nz

EARTH MOVING CONTRACTOR BOLER CONSTRUCTION LTD



Driveways, All Drainage, Site Cuts,
Property Maintenance, Subdivisions,
Horse Arenas, Footings & Drilling,
All earth work requirements.
Laser Equipped.

Steve PH 0274 971 154
A/H : 411 7177
E: bolercconstruction@xtra.co.nz
www.bolercconstruction.co.nz
Reg Drainlayer: Over 20 yrs Experience

Health & Beauty

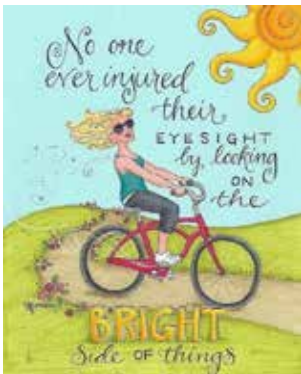
Foresight saves eyesight

1. Physical protection: Safety glasses stop flying debris, chemicals splashes, or that poke in the eye from garden plants.

2. UV protection: Have you considered prescription sunglasses? Alternatively, a UV coat on clear prescription glasses will protect your eyes from UV. Think of it as sunscreen for your eyes.

3. Eye disease protection: At For Eyes we detect eye disease early - and early intervention prevents vision loss. Cataracts, glaucoma, and macular degeneration - the list goes on for eye conditions we are, excuse pun, on the look-out for.

Make it your New Year's Resolution to get your eyes examined at For Eyes. Book in now online and choose your own appointment time, and we'll txt you a reminder the day before. www.for-eyes-optometrists-nz.au1.cliniko.com/bookings#service or visit the For Eyes Facebook page or website and click on the booking link.



Thank you

As we head into the Christmas and New Year period, we would like to take the opportunity to thank the people of the wonderful Nor-West for their continued support of Kumeu Chiropractic, and of Chiropractic care in general. This Covid affected year has had its challenges for everybody, and we were disappointed we were unable to provide the on-going care many of you needed over the Level 3 and Level 4 lockdowns.



However, summer is now on its way, and currently, we are very lucky to be able to function in a near-normal way. We hope you are all able to have an active, healthy, stress-free time over the holidays and encourage you all to continue to practise your new socially responsible distancing and good hygiene habits.

Remember, good spinal health is about performance, injury prevention, healing and general well-being, so by improving spinal function through Chiropractic Care, your body will work better and will heal better; it's as simple as that.

It is our mission in 2021 to create a healthier and happier community by adjusting as many spines as we can to promote a more natural healing process within every one of us. We can only do this through your continued referrals, and we appreciate all those who have told their friends and family to give Chiropractic a go. We have the best practice members around, and we have miracles happen in our office every day. That's why we love what we do.

The team at Kumeu Chiropractic are looking forward to helping even more people to achieve their health-goals over the next year and we wish to invite you to investigate how Chiropractic Care may benefit you and your family. Please have a safe and healthy holiday. Give us a call now. Phone 09 412 5536 - Kumeu Chiropractic. 8 Shamrock Drive, Kumeu.

Pure Allies

Christmas. It's looming and will be here before you know it.

If you would like hand crafted, personal, sustainable and natural gifts, then Pure Allies is the way to go.

Also for a bit of self-pampering and indulgence we have you covered.

From sun screens and insect repellent to pain relief balms we can custom make you anything you need.

Take care this silly season. Have a great Christmas.

Email pureallies@gmail.com.



Give yourself a "smile" gift this Christmas

It is the season to be jolly and indulge in a few festive treats and pamper ourselves and loved ones. But it won't be just our waistlines taking a hit this Christmas.

Throughout the party season we will be increasing our intake of sugar, so it's vital we take



Take Your Eyes to For Eyes!

- Advanced scanning equipment for early detection of cataract, glaucoma and macular degeneration
- Specialty assessment of child and adult reading difficulties
- Specific-tint lenses for Irlen Syndrome
- Lenses to correct red-green colour-blindness



Phone: 09 412 8172
email: foreyes@foreyes.nz
website: www.foreyes.net.nz

Matthew and Molly Whittington, optometrists in the Kumeu Village since 1993
Open 9-5 weekdays, Kumeu Village, 90 SH16 Kumeu

Kumeu Chiropractic
adjust ♦ adapt ♦ thrive

Dr. Chris McMaster ♦ Dr. Nolene McMaster & Associates

412 5536
www.kumeuchiropractic.co.nz

8 Shamrock Drive, Kumeu

Health & Beauty

extra special care of our teeth and gums.

A few tips from Kumeu Dental:

- Drink plenty of water and chew sugarless gum often
- Wait at least 20 minutes after your last snack or glass of wine before brushing your teeth, as any kind of acid will temporarily weaken your enamel.
- Rinse straight after coffee or red wine to maintain the good results from your last whitening treatment

And talking about whitening, here is the good news:

Our highly in demand whitening December special is here, so if you would like to have pearly whites this Christmas, ring us on 09 412 9507 and ask our friendly receptionists how we can help brighten your smile, while keeping your wallet smiling too.

Check out these amazing specials on www.kumeudental.co.nz. Smiles are contagious, spread it to your loved ones with a Kumeu Dental gift voucher.

Do you want to lose weight but feel stuck?

With Christmas upon us, this time of the year tends to bring lots of delicious treats, with many sweet treats such as chocolates, Pavlova, Christmas cake and fizzy drinks, many of which contain high levels of sugar and produce an instant pleasure hit, releasing dopamine in our brains.



Dopamine is the reward neurotransmitter. Each time we enjoy another sweet treat, we reinforce the same neural pathways in the brain which in time can become a habit and lead to the production of higher dopamine levels.

Have you ever found yourself eating something like chocolate or ice cream, knowing you should stop eating it, but being unable to put it down? It can be very difficult to stop eating these types of foods, particularly those high in sugar, because they have such a strong influence on our brain and hormonal systems.

We have created an online weight loss programme with tools to resolve carbohydrate cravings, addressing other key factors that affect weight like stress, sleep and of course food. The programme uses real food, with no calorie counting, no diet pills or meal

replacements and you get to decide what you're going to eat and when.

Sign up to receive our free guide to entitled: 5 Weight Loss Facts You Must Know To Lose Weight by visiting our website: www.WeightLossProgram.co.nz.

Au revoir 2020 and welcome 2021

With 2020 drawing to its end, we can look forward to moving into 2021.

For a lot of people, it has been a challenging year, we all know people who have been affected by the events of the year, but rather than looking at the negative, let's look at the positive that has come from 2020.

The events of 2020 gave people the opportunity to take a good look at themselves and they have started to make changes into their lives such as studying, spending more time with their family, taken up new hobbies, travelling around New Zealand, but more importantly, taken time out for themselves to self analyse and make needed changes.

What will 2021 bring? That's a good question, we can only hope that it will be an easier year than 2020. It will be a year where we can continue the new habits we have developed and opportunities to learn new things.

Astramana™ Healing Services can help you move into the new year



Zash Hair

HAIR BY CARLA

77 Waitakere Road, Waitakere, Auckland 0614

Phone: 021 814 663 zashhair

KUMEU GYM 24 SEVEN

YOUR FITNESS EVOLUTION

- Fully Equipped Gym
- Designated Cardio Area
- Group Fitness Classes
- Smart Training
- Personal Training
- Indoor Netball
- Supplement Shop

Providing fitness in Kumeu for 30 years

Ph. 412 8932 | www.kumeugym.co.nz

Health & Beauty

by offering you the opportunity to learn new skills such as Reiki, this will help you give back to yourself and also to help others, maybe an opportunity to set up your own business, learning Reiki is great for those who are massage therapists and anyone who has interest in Energy Healing. For those that are curious to look into the future we offer Tarot readings. Those who want to explore and clear the past, why not try a Past Life Regression. For those who have a fear or phobia, such as flying, spiders etc, why not try Hypnosis to overcome your fear or phobia? Let's make 2021 a positive year for all! We have some new exciting services/courses that will be available to you in 2021.

Astramana™ Healing Services, was founded by International Hypnotist, Reiki Master-Teacher and Clairvoyant & Tarot Reader Jason Mackenzie. Check out our website: www.astramana.com or email astramana@gmail.com with any questions or to book a session, workshop or a New Year's Tarot reading. We look forward to working with you and we wish you all a very Merry Christmas and Happy Holidays, all the best for 2021 and we look forward to welcome current and new clients in 2021.

Irritable bowel syndrome

Healing the Four Layers of Dysfunction - Irritable bowel syndrome (IBS) can be painful and embarrassing and is difficult to control. People with IBS have diarrhoea, constipation (sometimes alternating between the two) and bloating. Sometimes it is severe enough to stop people from going out for fear of an "accident".

Conventional medicine can help to relieve the symptoms, for example some loperamide or codeine might stop the diarrhoea temporarily. But the goal of treatment should be to restore full function so that you don't need to rely on medicines to save accidents or to relieve pain.

There are four body systems that need to be addressed to truly heal IBS. These include the diet, the balance of bacteria in the bowel, the mucus barrier lining the gut, and the enteric nervous system. Without addressing all four systems, the chances of long-term success are low.

In terms of diet, the initial focus should be on taking some pressure off the gut. This can be done by eating well cooked foods rather than raw foods. Soups and stews tend to be better tolerated than salads. The possibility of food allergies and sensitivities should also be investigated, because sometimes a healthy food can cause you problems.

The balance of bacteria in the gut is important but not easy to fix. Probiotics are useful here, especially the sporebiotics which are shown to increase the diversity of the microbiome. The sporebiotics have also been shown to assist with increasing the integrity of the

mucus layer protecting the gut cells from the gut contents. Vitamin A, immunoglobulins and polyphenols may also be beneficial here. To calm the hyper-reactive nervous system there are some great nutrients like magnesium, theanine and taurine that can be helpful.

For a simple tummy upset a bit of stewed apple can fix the problem. For a more serious case of IBS, then a multi-faceted approach is warranted. You can chat to the health coaches at Massey Unichem Pharmacy to find out more. Martin Harris 396 Don Buck Road, Massey 09 833 7239 martin@masseyunichem.co.nz.

Merry Merry Christmas

Frank, Melissa, Renate and Mandy wish you all a safe and happy Christmas and thank you for your support this past year.

We will be closed from Christmas Day until Monday January 11, 2021

Rest, enjoy family, friends and the summer and we hope to see you in 2021.


Hobsonville Optometrists - Glasses and Gifts, 413A Hobsonville Road, Hobsonville 09 416 3937.



Feeling stressed? It could be affecting your oral health

With the curve balls that 2020 has thrown, many of us are feeling more stressed and exhausted than ever before - a holiday break can't come too soon. With stress levels at an all-time high, it's important to be aware that stress can affect your oral health. For example, teeth grinding or clenching (bruxism) is a symptom of stress that even children and teenagers can suffer from. It can lead to loosened or broken teeth as they wear down, and aching jaws, headaches, stiff necks and even back pain. The use of muscle relaxants like Botox or a custom-made night guard are possible options to combat bruxism.

High stress levels make it harder for your body to fight infections like gum disease, so maintain good oral health habits and have regular professional cleanings. Painful mouth ulcers can also be triggered by stress. If you are suffering from stress and worry about its effect on your oral health, see your Dentist as they can assess your symptoms




HOBSONVILLE OPTOMETRISTS

Glasses & Gifts

Frank G Snell B.Sc., B. Optom
Optometrist

Unit A, 413 Hobsonville Road, Hobsonville 0618
Ph: 09 4163937. E: hobsonville@eyeteam.co.nz



Gillian Wiltshire D.O.

Registered Osteopath
ACC Accredited

36 Sunny Crescent
Kumeu
Auckland 0810
Ph/Fax (09) 412 5977
0212330413
gill.wiltshire@gmail.com

Health & Beauty

and recommend the best course of treatment.

For general and cosmetic dentistry, orthodontics, dental implants, tooth extractions, sleep dentistry and more, contact the friendly Fraser Dental team on 09 416 5050.

Tis' the sea-sun

Christmas! How did that happen? The team at Westgate Optometrists would just like to say a special thanks to our wonderfully loyal client-base for the continued support throughout what has been a bit of a trying year to say the least. We are eternally



grateful and wish you all a very merry Christmas and an enjoyable and well-deserved break. We look forward to seeing you for all of your eyecare needs in the New Year. In the meantime if you need absolutely anything you can find us at 4/46 Maki Street, opposite Kiwibank and NorthWest Mall and just around the corner from Goode Brothers Restaurant.

Phone: 09 831 0202, Website: www.westopt.nz, Facebook: www.facebook.com/westgateoptometrists.

Squeaky knees

A study released shows that physio is just as effective as surgery in patients with meniscal tears and arthritis of the knee.

The study, showed no significant differences in functional improvement after 6 months between patients who underwent surgery with postoperative physio and those who received physio alone.

This demonstrates that surgery may not always be the best first course of action. A physio, in many cases, can help patients avoid the often-unnecessary risks and expenses of surgery.

The findings suggest that a course of physio may be a good first choice and help surgeons, physicians, physios, and patients in decision-making regarding their treatment options.

Three hundred and fifty-one patients aged 45 years or older who had a meniscal tear and mild-to-moderate osteoarthritis of the knee were assigned to groups who received both surgery and postoperative physio or standardised physio. Within 6-12 months, patients who had physio alone showed similar improvement in functional status and pain as those who had undergone arthroscopic partial meniscectomy surgery.

Patients who were given standardised physio including and individualized treatment and a progressive home exercise programme had the option of crossing over to surgery if substantial improvements were not achieved. A massive 70% chose not to take up the surgery option at the 6 month mark.

This demonstrates that potentially millions of people globally are being exposed to potential risks associated with surgery that may or may not offer specific benefit, but with much higher expense to the patient. Physios are experts in improving mobility and restoring motion. The individualised treatment approach is very important in the early phases of rehabilitation in order to achieve desired functional outcomes and avoid setbacks or complications. So don't fear the worst come and see one of the team here at Hobsonville Physiotherapy and let's work together to find your "Freedom in Movement" and avoid the surgeon's knife.

Hobsonville physiotherapy - Emma Mackie phone 09 416 4455 or email emma@hobsonvillephysio.co.nz.

Three steps to better posture

One of the most common things people ask me is "how can I improve my posture?" Improving posture is not simply 'sitting up straight' or 'pulling the shoulders back'. For me, there are three steps you need to take to make longer term postural changes. Firstly, you need to make sure the underlying structure can get into a 'good' postural position. If you have restricted joints, it is going to be hard to change posture. Secondly, you need to reduce any soft tissue imbalances that are present due to your 'poor' posture. Finally, you can then strengthen the right muscles.

If you miss one of these steps, you can slow or stop your progress. If you want to find out more about improving posture, head over to our website and watch the video series I made. www.elevatechiropractic.co.nz Any other questions? Call us on 09 413 5312.



Sustainnoworx!
Sustainable Innovative Works

ALTERATION - UP-CYCLING - ECO FRIENDLY - PRE-LOVED

SHOP LOCAL, SHOP SUSTAINABLE, SUPPORT THE ENVIRONMENT
ALL PROFIT GOES TO SHAKTI WOMEN'S REFUGE

Tue - Fri 10 - 5 PM . Sat 10 to 4 PM . Sun 10 to 3 PM




[@Sustainnoworx](https://www.facebook.com/Sustainnoworx)

sustainnoworx@shakti.org.nz


455 Swanson Road, Ranui - 7/104 Central Park Drive Henderson

www.sustainnoworx.co.nz



DT DENTURE CLINIC
DENTURE SERVICES AND REPAIRS

Attention Denture Wearers Expert Treatment, Individual Needs

We offer:

- Full Dentures
- Partial Dentures
- Same Day Relines, Repairs and Tooth Additions
- Mouthguards
- WINZ Quotes



***Make a booking to discuss your
FREE treatment plan.***



Made in NZ with imported materials

67 Bringham Creek Road,
Whenuapai
www.dtdentureclinic.co.nz
P: (09) 416 5072

Area Columnists

Creating a business budget

A business budget tells you how much you spend running your business, if you can afford to invest in improvements, and how much you can afford to pay everyone. To get started, work out your projected turnover using a combination of historical data, work you know will happen in the coming year, and your production capability. Next be pragmatic with revenue, margins and expenditure expectations - include everything. If the budgeted profit/loss you arrive at isn't as ideal as you would like it to be, now is the time to put strategies in place to improve the scenario. And always include a cash flow budget along with projected sales and costs. This is because your projected profit might be strong but a cash flow budget will tell you if you are able to actually fund your operations. Finally, your business budget should be flexible and updated as and when your situation changes.

To find out more about business budgeting please contact Mark Foster and the friendly UHY Haines Norton Kumeu team on 09 412 9853 or email kumeu@uhyhn.co.nz.

Citizens Advice Bureau

Got that empty, aimless feeling? One day sliding into the next, life without real purpose. Time on your hands, time for a change. But what to do?

Would you like to feel valued, would endless variety pep you up, lots of contact with interesting and challenging people? Got your attention have we?



The Citizens Advice Bureau needs an injection of new blood, we're always looking for new volunteers, and maybe you are our next gem in disguise.

So what goes on at the CAB, who needs advice, what sort of advice? Where does the advice come from, am I supposed to know lots and lots about lots and lots? Sounds too hard really. Sorry, no.

But wait, think about it. The CAB has been operating in New Zealand since 1970 (started back in the UK in 1939, who knew?) Our Helensville office opened in June 1991 and has been supporting the community ever since. So what sort of things do people ask about and how am I supposed to know stuff?

Every volunteer is trained and shown how to access information by tapping into our massive information base. Volunteers are valued and appreciated and every effort is made to make sure they are comfortable in their roles and stay up-to-date. You will be rostered once a week for a 2½ hour shift, with another volunteer. The office manager is there to help

Clients make contact with the CAB for help on an amazing variety of subjects, ranging from things like tenancy issues, employment disputes, barking dogs, irritating neighbours, how to get to a hospital appointment, bus timetables, how to find a local tradesman, endless variety. But nothing ever beats us!

So, if you are a warm, empathetic person who basically likes your fellow man (and woman) and just likes giving something back in your community, pick up the phone 09 420 7162 for the Manager or just walk in and have a chat with us. Go on, it might just be fun.

What's really important for our young children?

Here at Country Bears we are very aware of the extent to which the community is growing with an increase of housing and new early childhood centres. We have always endeavoured to retain our innovative edge and remain true to our core values. To provide the very best start for the children of our community and to do this in a way that promotes respect, initiative and confidence, in a natural outdoor environment.



SPECIALISING IN ALL TYPES OF
PLUMBING & DRAINAGE



PLUMBING



DRAINAGE



GAS



PUMPS



WATER TANKS



FILTRATION

LOCAL, RELIABLE & REASONABLE

New housing,
alterations & repairs



Domestic & Commercial



P 09 412 6322

E sales@waterfx.co.nz

"THE BEST TIME
TO BUY WAS 20
YEARS AGO, THE
SECOND BEST
TIME IS NOW."

Sell now with
DANIELLE DAVIES
021 208 1960
DANIELLE.D@BURMESTER.CO.NZ

Burmester REALTY



Area Columnists

We believe that over the 27 years since our opening, social changes have had a dramatic influence on our young children; we need to return to some of the simple values that can be lacking and avoid the commercial traps. We are fortunate enough, here in Kumeu, to live in an area rich in space with a strong sense of community; these are critical ingredients that we feel should be treasured with a need to be preserved.

At Country Bears we provide an outdoor experience for children to build a foundation for a love of learning through discovery of the wonders of nature. Our emphasis is on nature as a vast and wonderful classroom, encouraging empathy and respect to all living things through relationships and connections to Papatūānuku (Mother Earth).

We want our children to learn a love of the outdoors, appreciate and respect our environment and the lessons that nature provides. Being set amongst the trees (with our very own forest), large open spaces, we are privileged to be able to promote respect, trust and a sense of exploration through creative and inspiring natural experiences.

Children are challenged to learn together and collaborate, then as individuals, to question, to explore and foster an appreciation for nature. They need to learn to evaluate a given situation, take a risk, and make a few mistakes. Through their mistakes, this is where the magic of learning occurs. This will also enhance their physical confidence, emotional intelligence and develop strong relationships. Our wish is to develop confident young children with an enthusiasm to learn and to share their love of play and exploration.

If you would like to visit our wonderful Centre, designed to provide

the children space and time to develop at their own individual time, give us a call on 09 412 8055 to arrange a suitable time. In the meantime, check out our Facebook page: www.facebook.com/cbearsecc or website www.countrybears.co.nz.

Phelan's Local Board Update

As 2020 draws to a close many will be drawing a sigh of relief, it's been a difficult year and no doubt everyone is looking forward to a 'vanilla' 2021!

For Auckland Council the budget challenges continue with predictions of further shortfalls in income to the tune of hundreds of millions of dollars. Council relies of 60% of its income from non-rates sources and Councillors are going to be grappling with some very tough decisions next year following public consultation on the Annual Budget and refresh of the 10 Year Plan.

Over the last week there has been discussion about 'rural representation' for Rodney and a suggestion from our Councillor and the North Action Group (NAG) that boundaries should be changed for the Rodney Local Board subdivisions to enable better representation of rural issues.

This comes at an odd time, not only is Council battling unprecedented budget issues due to COVID19 but a Auckland wide review of boundaries was completed last year and none of the suggested changes were raised then.



A GOOD BEGINNING LASTS A lifetime

Remember adventuring in a diverse natural environment, immersed in nature; playing confidently amongst the trees, paddocks, veggie gardens & treehuts?

It's all still possible for your family with us.

SPACES ARE LIMITED, POP IN OR CALL US FOR MORE INFO

P. (09) 412 8055

A. 79 Orahā Rd, Kumeu 0892

WWW.COUNTRYBEARS.CO.NZ



Area Columnists

Currently only one Local Board member lives in an urban area (Warkworth), with the rest of us living in rural areas. I live in Muriwai, which could be described as a rural township but we have no water or sewerage services, Vicki Kenny lives in Wharepapa on a gravel road, Danielle Hancock lives in Kaukapakapa, again on a gravel road, and Brent Bailey lives in Waimauku on a large rural property.

The Local Board has always been a strong advocate of rural issues such as maintenance and sealing of gravel roads because not only do we understand these issues firsthand, but we're engaged with the community we represent. Having just signed off the fourth Local Board Plan since 2010 it clearly contains strong advocacy for our huge rural area.

There is always a balance to be struck between our rapidly growing urban towns and the needs of rural communities and we continue to debate and cooperate on these as a Board to ensure facilities and assets we manage on your behalf are fairly distributed and funded.

The main objections from NAG are around issues like road sealing which unfortunately the Local Board has no direct control over as Councillors (the Governing Body of Auckland) are the ones who decide how much money is allocated to this. Our Councillor lives in a fully urban area on the North Shore but no one would suggest he hasn't been a vocal advocate for rural issues. That suggests it is not about electoral boundaries or where people live, but whether they are engaged with the communities they represent.

The Rodney Local Board has achieved much over the last 10 years and continues to be a voice for the grassroots in our community. We are proud to be part of a team of nine that enables your voices to be heard, and the team that represents this area have worked hard to ensure we are focusing on core business and delivering for the district. We're all looking forward to continuing this work in 2021.

We hope everyone has a relaxing and safe Christmas.

Phelan Pirrie. Chair, Rodney Local Board. 021 844 124. phelan.pirrie@aucklandcouncil.govt.nz.

Danielle Hancock. Rodney Local Board Member. 021 195 9826. danielle.hancock@aucklandcouncil.govt.nz.

Brent Bailey. Rodney Local Board Member. 021 730 892. brent.bailey@aucklandcouncil.govt.nz.

Vicki Kenny. Rodney Local Board Member. 027 670 9968. vicki.kenny@aucklandcouncil.govt.nz.

The Travel Brokers

Whilst I am really looking forward to the day when you can confidently plan international travel again, in the meantime we have our beautiful country right on our door step, and now is the perfect time to travel around New Zealand and support our own tourism industry without the crowds!

I have a full range of New Zealand holiday options that I can research & book for you to enjoy, including:

- Fabulous mini tours with bespoke & unique experiences
- Rail journeys, campervans, rental cars with suggested self-drive itineraries
- Theme focused trips, such as Golf, Gardens, Cycling, Walking, Wine & Food
- Special Events: Balloons over Waikato, New Plymouth Gardens & Festival of Light, Napier Art Deco & Vines, Whanganui Vintage Festival, and more
- The "Islands": Great Barrier island holidays, Stewart Island adventures, Chatham Island back to nature excursions
- Short cruises: An overnight fishing trip ex Manapouri with a guaranteed crayfish dinner, or 2 nights on the Doubtful Sound with kayaking & tramping & waterfalls. Overnight in the Bay of Islands.
- How about a private hire of a Riverboat on the mighty Waikato River out of Tuakau, sleeps 12, comes complete with skipper, minimum 2 nights.
- Longer cruises: 6 nights on the traditional styled Affinity, sleeps just 18, ex Picton, around the gorgeous Marlborough Sounds. Or 6 nights on the deluxe Fiordland Jewel, also sleeping just 18, through Doubtful & Milford Sounds - however this cruise is so popular, all her King cabins are sold out until June, there are just a couple of departures in her Twin/Quad cabins available prior to this.
- Thinking ahead to next summer : 7 nights of luxury on Island Escape ex Auckland to the Bay of Islands roundtrip (summer 2021/22)
- For something really special - this summer Jan/Feb 2021 we have some unique cruise itineraries visiting Stewart Island, and the Sub-Antarctic islands on the expedition style Heritage Spirit of Enderby



SEPTIC & WATER TANK CLEANING

YOUR SEPTIC TANK SHOULD BE CLEANED EVERY 3 YEARS (AVERAGE FAMILY OF 4)

WE SERVICE ALL AREAS

PROMPT, PROFESSIONAL SERVICE WITH 30 YEARS EXPERIENCE

PHONE: 09 412 9210 OR 027 492 4494





THE TRAVEL BROKERS
a member of


Tanya Franklin
Travel Broker

T +64 9 411 9105
M +64 21 254 9169
tanya.franklin@ttb.co.nz

Waimauku, Auckland
New Zealand

thetravelbrokers.co.nz/tanyafranklin



- Warrant of Fitness - \$45
- Mechanical repairs, servicing and Auto Electrical for all makes & models
- All the top tyre brands at great prices, tyre fitting, wheel balancing and alignments
- Full range of car batteries available
- Air conditioning services for all vehicles



906 State Highway 16, Waimauku Roundabout
Ph: 09 411 7579



Area Columnists

and she has journeys from 9 to 21 nights. Did you know that there are more varieties of penguins here in these islands close to NZ, than there are in Antarctica itself! Huge albatrosses with 3 metre wingspans, mega herbs & plants that cannot be found anywhere else in the world, this really is the Galapagos of the South Pacific.

Speaking of South Pacific, we are all just waiting to hear when we will be opening a bubble with the Cook Islands, and if this trial is successful, then soon after will be a 'Bula Bubble' with Fiji.

My guess would be in time for the April school holidays. As soon as it the dates will be announced, the rush will be on!

I already have clients who have asked me to secure some accommodation for them so that they don't miss out, please just get in touch.

As a self-employed local business owner, I have supported Waimauku's School, Scouts, Lions club, and love being a part of our fantastic community.

If there is anything that I can help you with, please just ask, I thank you for your support,

Tanya Franklin - The Travel Broker - phone 09 411 9105 or 021 254 9169 or email tanya@ttb.co.nz.

The stress of Christmas

Well what a year it has been. We have all had to learn to be flexible, pivot and build a whole new resilience.

Some of us are still recovering from this year and now Christmas is just around the corner with all its stresses and anxieties that it brings. I have put together five positive tips going into Christmas time to help us shift any negativity we might be feeling.

1. Give presents and gifts that you can afford, it is not a competition.
2. If funds are tight, then organise a fun potluck Christmas dinner, or

everyone brings a dish.

3. Start each day of December with gratitude for what you already have.

4. Prepare, start thinking things out now.

5. Accept help, it is not a competition, it is about sharing the season with people we care about.

It has been a hard year, so be kind to yourself. Kim McNamara - www.lifesuccesscoach.co.nz.

Craigweil House

Christmas has arrived at Craigweil House after what has been a challenging 2020 for all. "It was only a month or so ago that we were able to celebrate our mid-winter Christmas" says one resident. The nationwide lockdowns required an extremely strict but necessary set of COVID-19 risk identification and infection control protocols to keep residents and staff safe. Nevertheless, the home has continued to keep up a lively, fun, and active home during this year. One of our newest residents are the lovely couple Gert and Rosalie Oud.



Gert originally migrated from Holland, to New Zealand when he was 18 years of age. A family of a market gardener, he brought his own unique gardening methods and seeds from Holland called 'Poppa Beans'. The Ouds spent most of their life in Dargaville until recently when family decided to move and start the next chapter of their life here at Craigweil House. Gert's passion for gardening is not slowing anytime soon, in just few weeks Gert did an amazing job transforming the kitchen garden into a fabulous looking plot, where he spends most of his time during the day.

Craigweil House wishes you all a very Merry and safe Christmas.

Craigweil House offers both long and short stays. As always you are welcome to pop in and meet the team and see our fabulous home. We are over the road from the Parakai pools.

Marja reports

Reflecting at the end of the year is something I'm sure we all do. Looking back at 2020, we will all have mixed feelings about 'the year that's been' and many have been doing it very tough.

I would like to use this opportunity to thank our essential workers

Kumeu



Village Kindergarten

Looking for exceptional childcare & learning opportunities for your child? Talk to us.

We offer sessional and day care options for 2 – 5 year olds, Monday to Friday 8am to 4.30pm. 20 ECE hours available. Our dedicated, highly experienced teachers, strong focus on literacy and numeracy skills will give your child the best start to meet their future learning needs. Come and see us or give us a call to find out how we can help.

Enriching care & educational programmes for preschoolers

5 Shamrock Dr, Kumeu 0810, Auckland Phone: 09 412 9361 Email: kumeuvk@xtra.co.nz
www.kumeuvillagekindergarten.co.nz

Marja Lubeck

Labour List MP Based in Rodney

For appointments and assistance please phone:

☎ 0800 582 325 (0800 LUBECK)

@ marja.lubeck@parliament.govt.nz

✉ 7a/18 Oteha Valley Road Extension, Albany



Authorised by Marja Lubeck,
Parliament Buildings, Wellington

Area Columnists

who kept New Zealand going under most stressful circumstances. Our health workers, security guards, cleaners, supermarket workers, bus drivers, and many more. And the businesses and workers who had to work through the challenges and complexities of a vastly changed world.

But at a time when other countries are still reporting tens of thousands of new COVID-19 cases and hundreds of COVID-related deaths each day, here we are able to 'mix and mingle', meeting up with family and friends, being able to go out and see a movie, watch the kids play sports, live life.

I worry about my family on the other side of the world in The Netherlands, where COVID-19 like in so many other countries - is still very present with hundreds of new cases every day. In a country not much bigger than Northland, more than 8,000 people have died.

My parents have been pretty much confined to their home since March, as are many of the elderly and vulnerable, who do not feel safe to go anywhere. Contrast that with NZ's very low infection and mortality rates.

We went hard and early with our health response. Because we knew from the start that the best economic response was a strong health response. Thanks to everyone's hard work and sacrifices, we now have the chance to get our economy moving faster than many other countries. And while the global economic impact will flow through to the NZ economy, we are well placed to weather the storm due to paying down debt and running surpluses from the moment we came into office.

It's given us a head start and we continue to accelerate our economic recovery, recently announcing changes to the small business cash-flow loan scheme. Close to 100,000 business have received the loan, with a total lending of \$1.6 billion. The average value of each loan is modest at \$17,000, but it's much needed working capital to help businesses who have been in a tight spot. We have now extended the scheme for a further three years, also extending the interest-free period from one to two years. And we are broadening what the loan can be spent on. Supporting small businesses remains an essential principle in our five-point plan to keep NZ moving and keep up the momentum of recovery.

It is a real privilege to be back at Parliament starting my second term as part of one of the most diverse governments in New Zealand history.

So while 2020 has been a year like no other, I wish you all the best for 2021 and the ability to conquer any challenges this year brought. As we are working on building back better together, I wish you hope and silver linings for the coming year, time to relax and Christmas cheer.

Marja Lubeck MP - Labour List MP.

Sayers Says It

By Cr Greg Sayers, Councillor for the Rodney ward.

Have you wondered why Auckland's roads look patchy and



QUINOVIC
Experts in property care and return



**Contact me
for a FREE rental
Appraisal!**

Brendon Stuckey

09 837 6000 - 0274 907 777

brendon@quinovic-wa.co.nz

Area Columnists

seemingly not that well maintained? Even sealed roads are falling apart at different locations around the district.

Have you ever wondered to yourself if that is the roading contractor's quality of workmanship, or if it was a case of not enough money being spent?

The unequivocal answer was given by Auckland Transport's Chief Executive Officer to the Mayor and Councillors this month. In an unmistakable plea, he said Auckland Council was choking the financing required to renew and maintain Auckland's roading network.

He explained since the start of the Super City existing repairs were having to be withheld when they were due because inadequate funding was being allocated. Auckland Transport said it was indisputable that roads were deteriorating and effectively going backwards. The situation was critical and the problem was now clearly visible to residents, ratepayers and visitors across Auckland.

To be clear, Auckland Transport maintain all our roads, except for SH16. The state highways are maintained by central government's NZ Transport Agency organisation.

However, for years Auckland Transport has requested a budget of \$420 million per annum. Auckland Transport explained they were consistently only being allocated \$170 million per annum by Auckland Council. I understand Rodney has been seeing \$1.2 million of that. The shortfall is staggering and goes a long way to explaining why roading contractors are forced to often carry out minimal low quality repairs.

So while Auckland is merrily spending \$1.1 billion a year on building new glossy transport projects, how to maintain existing roads, without significantly hiking rates, has proven to be Council's Achilles heel.

It was in 2018 when the Auckland Council introduced an additional tax on Aucklanders called the Regional Fuel Tax. This was to improve the transport infrastructure.

Last year Auckland Council received \$129 million from the fuel tax but only spent \$89 million of it, citing there was the need to carry out planning work before spending the money.

This year Auckland Council received \$148m and spent even less at \$79m, so what's happened to the unspent \$109 million?

Ratepayers may be shocked to learn the Council can in turn use the unspent transport money on its own daily operational expenses or for financing its ballooning debt.

When my investigations uncovered these inconvenient facts I was so outraged I whistle blew the figures to the Auditor General. The Auditor General acknowledged my concerns about the inequity of such an approach by Auckland Council but said it was not illegal.

Surely such an accounting practice is wrong and all Regional Fuel Tax money should be spent on transport related projects. If the standard of roading is to improve then fuel taxes need to be used the way the public was promised. I will continue to pursue this on the public's behalf.

On a more refreshing note, I look forward to serving Kumeu/Huapai and surrounding districts interests in 2021. May I also take this opportunity to wish you and your family a very Merry Christmas and a safe and enjoyable summer.

Chris Penk MP

When the Word of the Year is decided for 2020 (by whoever decides these things!), I suspect that "unprecedented" will be a top contender. This year has certainly had its highs and lows, with a good many lessons along the way.

It doesn't seem like that long ago we were enjoying the sunny weather - albeit with attendant water shortages - of last summer. And then, of course, we were hit by the perfect storm that was Covid-19.

Reflecting on 2020, I can think of several things that made the year at least somewhat positive, as well as positively unique.

First, community camaraderie. I mention this a fair bit, I know, but the events of 2020 were an eye-opening testament to the strength of community around New Zealand. Armies of volunteers assisted those in need throughout lockdown and we shared our re-commitment to supporting local businesses.

Second, our essential workers. This is not just an acknowledgement but rather a huge thank you to all. Like most Kiwis, I will never forget the hard work you put in that kept New Zealand running.

Finally, the gift of democracy that we unwrap every three years. Perhaps it should be every four years that we hold elections but that's another story for another day. Thank you to the good people of the new Kaipara ki Mahurangi electorate for allowing me the



CRAIGWEIL HOUSE
WARMLY INVITES YOU TO...

COME VISIT OUR UNIQUE BOUTIQUE RURAL CARE FACILITY

Situated on the Twin Coast Discovery Highway off State Highway 16 within reach of Muriwai Beach and the Kaipara Coast.

A caring environment nurtured by our dedicated team
Rest Home • Hospital • Secure Dementia • Day Stays

★★★ No Premium Room Charges ★★★

You're welcome to come in for a cuppa and see us or ring us today to discuss a complimentary day stay

09 420 8277
143 Parkhurst Rd, Parakai
info@craigweil.co.nz



Craigweil House
Home & Hospital
FEEL AT HOME WITH FAMILY



Chris Penk
MP for Helensville

Stop in, the office is open!

365 Main Road, Huapai
09 412 2496
chris.penkmp@parliament.govt.nz
chrispenk.national.org.nz

National 
Authorised by Chris Penk, 365 Main Road, Huapai, Auckland.

Area Columnists

privilege of continuing to serve you.

I look forward to being your voice in Parliament and working hard for this area over the coming term. Being in opposition means I don't get to make many decisions but I'll continue to do everything I can to encourage the Government to serve you. Let's keep working hard to ensure that Auckland's rural north and west actually gets the infrastructure investment we deserve.

I hope that the rapidly arriving Christmas season will bring a well-earned rest for everyone, even while acknowledging those who "work through".

Please remember that if you need help with anything you can contact my office 09 412 2496 or visit my Facebook page (facebook.com/christopherpenk) to see where I'm heading next in my mobile office, affectionately nicknamed "Natty"!

Cheers, Chris Penk (MP, KKM).

Diversifying in these Covid times

Remember this local Rodney couple - Genevieve (Genna) and Kerrin Revell? In 2007 they headed off on an epic journey to circumnavigate New Zealand on horseback in 365 days. Once back from this amazing adventure they wrote a book and produced a documentary (downacrossup.co.nz). They both worked in TV and established their own photography/studio business and then expanded their business to incorporate filming, editing, and producing videos for TV and social media (www.purplesheep.co.nz)

Now Covid has come along. Like so many small business owners their business world was turned upside down due to Covid 19 - with the majority of their client base affected also. While Purple Sheep Productions endeavours to claw its way back from the Covid 19 heartache, Genna and Kerrin are taking an opportunity to diversify and expand in other closely related areas. Genna has returned to painting and already has work commissioned from America and within NZ. Kerrin is using his photographic background/skills producing and selling colourful abstract art that ensures the 'wow' factor on those empty walls whether they be here or abroad.

Genna is an artist (pop art paintings, pet and family pencil sketches), a graphic artist and photographer. She has a Diploma (with distinction) in Digital Video Production. Kerrin is a photographer and has a diploma in Performing Arts and a National Certificate in Film and Television.

You will be able to view/purchase their works and meet Genna and Kerrin as they opened an art gallery, 'Gallery X', in November in what is known locally as the 'Old Butcher's Shop' situated at the southern end of Helensville on the corner of Commercial Road

(main road) and Karaka Street. There will be plenty of variety from both of them to challenge your eye with changing art pieces on show for sale. Besides the art on show, this talented, adventurous couple can create that special piece of artwork to brighten up your family home, bach or business. www.grevell.com www.kerrinrevell.com.

Good company, fun and laughter

Playing games together is a great way to spend time. Good company, fun and laughter all help to keep people social, happy and to shake off the stresses of the day. Games stimulate the brain areas that are responsible for memory and cognitive skills. And keeping our minds active in an enjoyable way is just what we need to ward off unwanted decline. Different games require us to use different skills which are excellent things for



our brains, memories and moods. Games also allow people to be creative and this in turn can lead to an increase in self-confidence. A popular board game, Rummikub is an example of one which really hones your strategy and patience skills. Another game called Qwirkle with its brightly coloured tiles is easily adaptable for those with memory impairments. For others who are looking for a bit more movement and straightforward competition, games such as Skittles or Golf Target are good for mind and body. At Mindjig we stock games to encourage people to keep their brains and bodies active and social, whatever their age or ability. Visit www.mindjig.co.nz to see more or Email Julie or Jonathan at info@mindjig.co.nz, Phone 09 600 3251, Phone or Text 022 480 3022.

Northwest Funeral Services

Proudly New Zealand owned and operated by locals



09 214 8588 // 021 237 5042 // 021 868 499

office@northwestfunerals.co.nz

www.northwestfunerals.co.nz

303 Matua Road, Kumeu, Auckland



- HEAT PUMPS & AIR CONDITIONING
- DUCTED & HOME VENTILATION SYSTEMS
- SERVICING & REPAIR
- FREE ASSESSMENT & QUOTE

Office 09 912 0553,
admin@clarksonaircon.co.nz,
www.clarksonaircon.co.nz

WATER TANK CLEANING & REPAIRS

& Solid Plastering

Call 027 410 8404



\$ 54.99 EACH

Jack Daniels Whiskey 1L

Appleton Estate Rum 1L



\$ 39.99 EACH

Grant's Scotch 1L

Famous Grouse Scotch 1L



\$ 44.99 EACH

Jim Beam Black Extra Aged 1L

Jim Beam Devil's Cut 1L



\$ 54.99 EACH

Kraken Spiced Rum 700ml

Sailor Jerry Spiced Rum 700ml



\$ 36.99 EACH

Smirnoff Vodka 1L

Gordon's Gin 1L



\$ 39.99 EACH

Absolut Vodka 1L

Baileys Irish Cream 1L



\$ 39.99 EACH

Coruba Rum Dark & Gold 1L

Johnnie Walker Red Label 1L



\$ 39.99 EACH

Canadian Club Whisky 1L

Jim Beam Bourbon 1L



\$ 64.99 EACH

Jim Beam 1.75L



\$ 36.99 EACH

Bells Scotch 1L

Dewar's Scotch 1L



\$ 35.99 EACH

Woodstock 1L

Black Heart 1L



\$ 34.99 EACH

Kahlua 1L

Malibu 1L



\$ 39.99 EACH

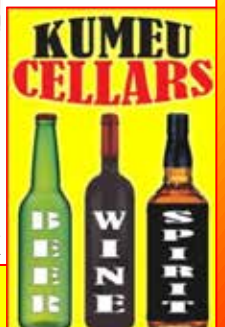
Steinlager Classic 24PK



\$ 36.99 EACH

Lion Red 24PK

Deals expire 31 Oct 2020
No ID - No Service
Intoxicated - No Service



Super LOW Prices || OPEN till 10PM || Kumeu Village Shops, 88A Main Road, Kumeu